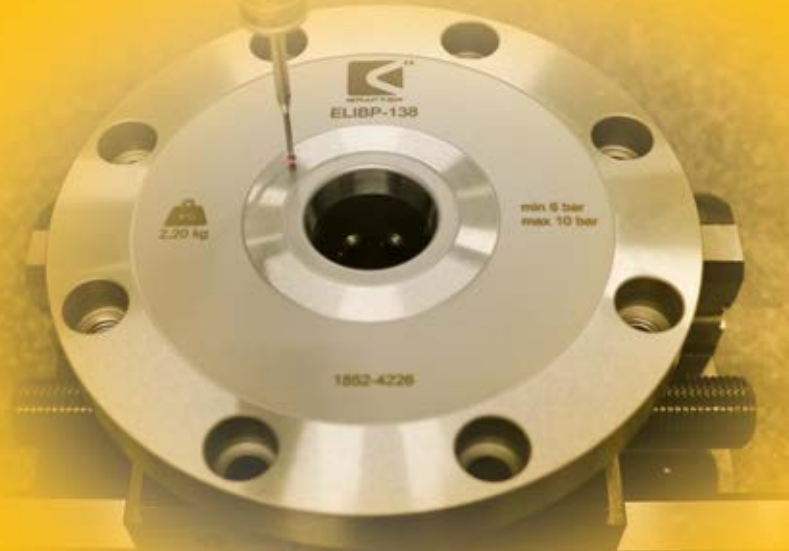


EASYLOCK

Zero point systems



Zero point systems **EASYLOCK**



engineering data

Innovation is our job



ENGINEERING DATA, expert in machining clamping and SMED techniques (quick change over) for more than a quarter of century, has always been focused on innovation.

















With innovation and adaptability being at the heart of our mission

and our know how, our team of professionals has developed turnkey solutions to increase the autonomy of your machining centres and raising production output:

- > EASYBOX: a full range of robots for the transfer of pallets automatically to the machining centres 3, 4 and 5 axis, for companies that want to optimize the available machining time.
- > EASYPROD: an automation solution, a 6-axis robot for loading and unloading workpieces of CNC lathes.
- > EASYCONNECT: Connected tables to clamp your workpieces directly through zero-point systems for a quick-change of production series. It is possible to work on different clamping zones making a great variety of fixtures combinations.
- > EASYLOCK: zero-point systems for a quick changeover of workpieces and fixtures by at least 5 μm .
- > EASYCLAMP: Self-centring vices for your 5-axis machining operations.

Our experts at the R&D department study and design custom solutions for your specific operations.

Contents

	EASYLOCK FUNCTIONAL OVERVIEW		PAGE 4
	QUALITY CONTROL		PAGE 5
EASYLOCK WITH CLAMPING BALLS			
	ELxBx-138	138 DIAMETER EASYLOCK	PAGE 6
	ELxBx2-138		PAGE 8
	ELxBx-85	85 DIAMETER EASYLOCK	PAGE 10
	ELxBP-112	112 DIAMETER EASYLOCK	PAGE 14
	ELxBx2-112		PAGE 18
	ELxBxG-112	COMPACT EASYLOCK	PAGE 22
	ELxBxG-90		PAGE 24
	ELxBxP-62	62 DIAMETER EASYLOCK	PAGE 28
	ELxBxF-62		PAGE 30
EASYLOCK WITH CLAMPING SLIDES			
	ELID-x-138		PAGE 34
	APPLICATIONS		PAGE 38
	UPPER TABLES		PAGE 42
	EASYCONNECT CONNECTED TABLES		PAGE 44
	CLAMPING FIXTURES		PAGE 48

EASYLOCK Zero point systems

The SMED system (quick-change of tools) is well recognised for increasing productivity and helping the operator to perform a changeover of fixtures quickly and easily.

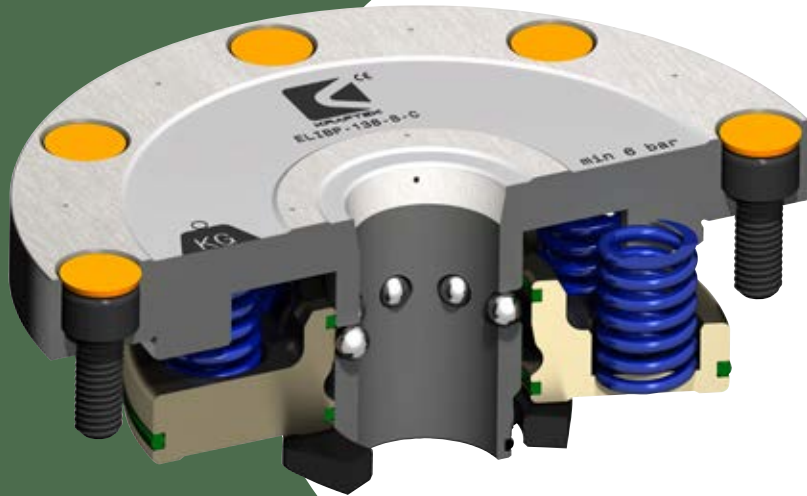
Benefits of using EASYLOCK zero point systems:

- > Repeat accuracy of less than 5 microns
- > Quick-change of production series
- > Modularity of tools and interchangeability between equipped with a SMED system machines.
- > Adaptability by project
- > Increase Overall Equipment Efficiency (OEE).



EASYLOCK

> FUNCTIONAL OVERVIEW OF OUR EASYLOCK ZERO POINT SYSTEMS



- > EASYLOCKS are available in steel or stainless steel. They are used with 3 kinds of clamping pins for centering, locating and positioning.
- > Thanks to these clamping pins, tools can be clamped and positioned precisely on the EASYLOCK zero point system.
- > The blow out system evacuates excess air and prevents cutting oil pollution inside the EASYLOCK..

The 3 following options are available:

> Blow-out system option:

*(-S)= Blow-out

This EASYLOCK option evacuates chips inside during unclamping the workpiece. The chips are projected outwards.

> Control Option:

*(-C)= Control

The control system checks EASYLOCK opening during unclamping. This option is mainly used for robotic systems.

> Indexing Option:

*(-I)= Indexing

The indexing function ensure an exact positioning every 90°.

EASYLOCK

> QUALITY CONTROL

> Each zero point system is mounted and tested before it leaves our premises.

We are ISO 9001: 2015 certified



> ELxBx-138 (-S)(-C)(-I)



Technical Features

The Easylock ELxBx-138 clamping module positions and clamps workpieces or fixtures with a repeat accuracy of less than 5 μm . Piston with central hole (holding nut in the piston base).

> EASYLOCK system locks through spring forces the clamping pin in rest position. A safety system guarantee. It can be opened hydraulically (ELxBH-138) or pneumatically (ELxBP-138).

> This zero point system is in hardened steel (ELABx-138), or treated stainless steel (ELIBx-138).

> The unit can be equipped with a blow-out system (-S), an unlocking control system (-C), or an indexing system (-I).

> The set screws, their cover caps, the seals and the indexing pin are delivered with the module.

The respective clamping pins are:

TELB-138 pull-stud pin

TDELB-138 positioning pin

TCELB-138 centering pin

For clamping pins, see pages 12 and 13



Technical Features

The Easylock ELxBx2-138 clamping module positions and clamps workpieces or fixtures with a repeat accuracy of less than 5 μm .

> EASYLOCK system locks through spring forces the clamping pin in rest position. A safety system guarantee. It can be opened hydraulically (EL-BH2-138) or pneumatically (EL-BP2-138).

> This zero point system is in hardened steel (ELABx2-138), or treated stainless steel (ELIBx2-138).

> The unit can be equipped with a blow-out system (-S), an unlocking control system (-C), or an indexing system (-I).

> The set screws, their cover caps, the seals and the indexing pin are delivered with the module.

The respective clamping pins are:

TELB-138 pull-stud pin

TDELB-138 positioning pin

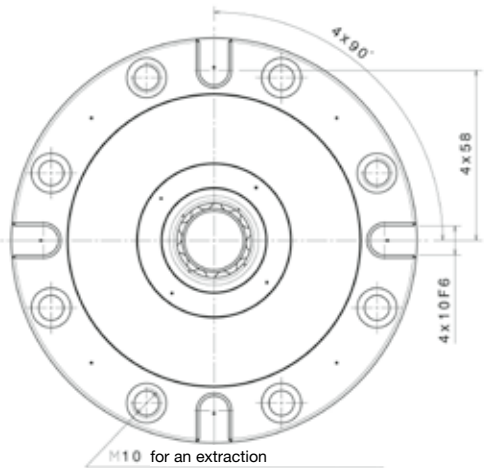
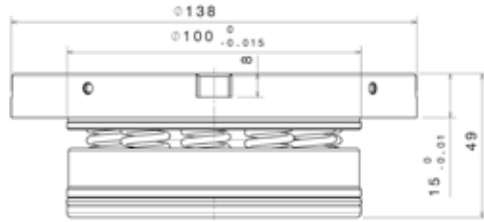
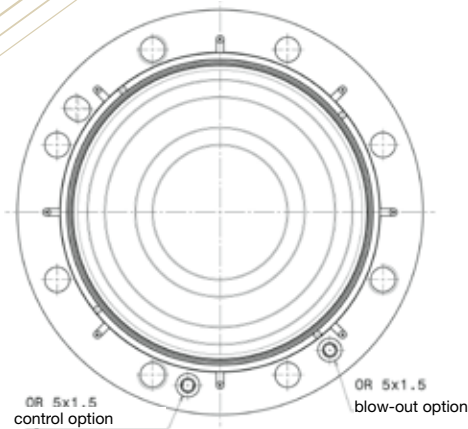
TCELB-138 centering pin

For clamping pins, see pages 12 and 13

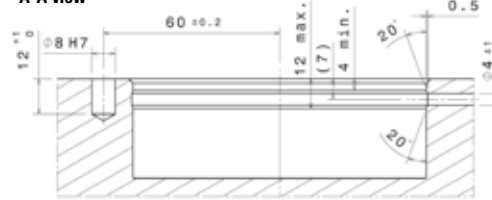
EASYLOCK

> ELxBx2-138 (-S)(-C)(-I)

DIMENSIONS AND MOUNTING POSSIBILITIES

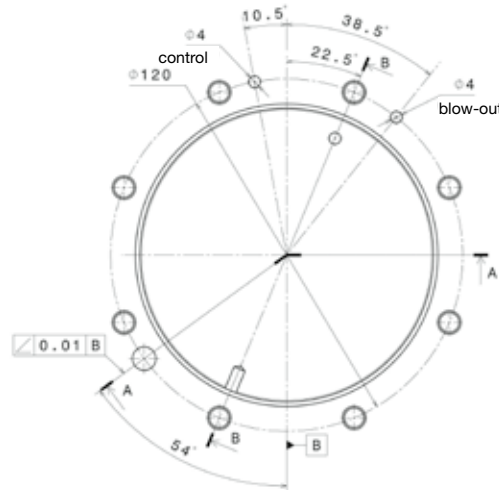
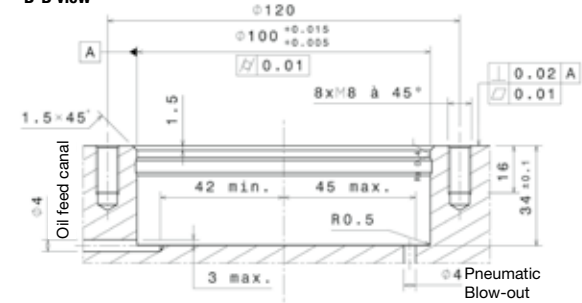


A-A view



Blowing out hole to be positioned between the fixing screws

B-B view



Technical Features	ELxBx2-138-S-C-I	ELxBx2-138-S-C-I
Repeat accuracy	0,005 mm	0,005 mm
Operating pressure for opening	30 bars	6 bars
Maximum pressure	60 bars	10 bars
Pull-in force up to	35 kN/50 kN (CHc M10/CHc M12)	35 kN/50 kN (CHc M10/CHc M12)
Holding force	25 kN	16 kN
Weight with set screws	3.1 KG	2.5 kg

EASYLOCK

> ELxBxP -85(-S)(-C)(-I)



Technical Features

The Easylock ELxBxP-85 clamping module positions and clamps workpieces or fixtures with a repeat accuracy of less than 5 µm.

> EASYLOCK system locks through spring forces the clamping pin in rest position. A safety system guarantee. It can be opened hydraulically (ELxBHP-85) or pneumatically (ELxBPP-85).

> This zero point system is in hardened steel (ELABxP-85), or treated stainless steel (ELIBxP-85).

> The unit can be equipped with a blow-out system (-S), an unlocking control system (-C), or an indexing system (-I).

> The set screws, their cover caps, the seals and the indexing pin are delivered with the module.

The respective clamping pins are:

TELB-138 pull-stud pin

TDELB-138 positioning pin

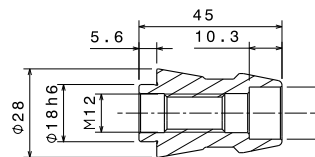
TCELB-138 centering pin

For clamping pins, see pages 12 and 13

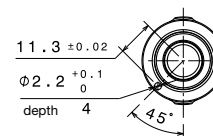
EASYLOCK

> CLAMPING PINS

FOR EASYLOCK Ø85 AND Ø138 WITH CLAMPING BALLS



TDELB clamping pin only
housing for a ø2 alignment bore

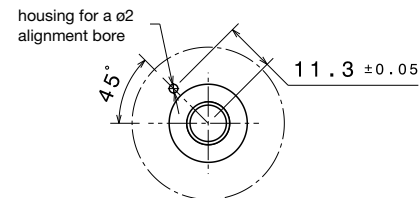
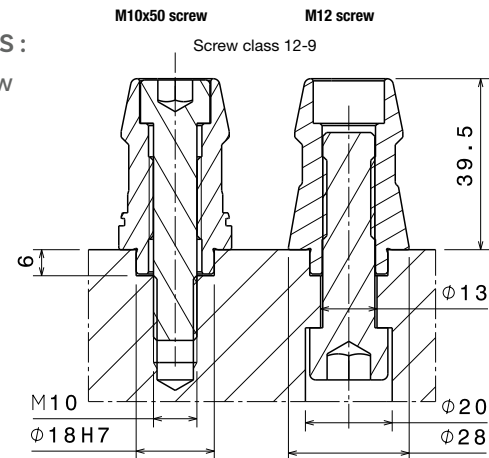


CLAMPING PINS FOR:

- > ELxBx-138 (-S) (Easylock with Ø138 clamping balls)
- > ELxBxx85 (-S) (Easylock with Ø85 clamping balls)

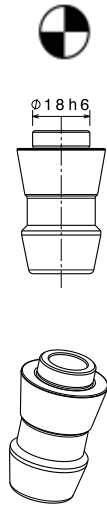
2 WAYS TO SCREW THE CLAMPING PINS :

Attachement of a M12 screw from below
or a CHc M10 screw from above

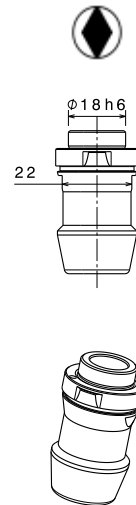


EASYLOCK
> CLAMPING PINS INSTALLATION AND POSITIONING

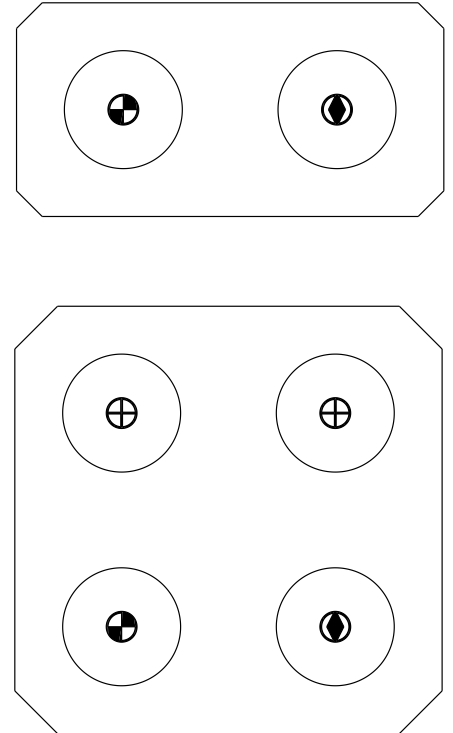
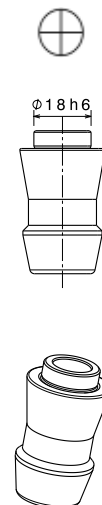
Centering pin
TGELB-138



Positioning pin
TDELB-138



Pull-stud pin
TELB-138



EASYLOCK

> ELxBP-112 (-S)(-C)(-I)



Technical Features

The Easylock ELxBP-112 clamping module positions and clamps workpieces or fixtures with a repeat accuracy of less than 5 µm.

> EASYLOCK systems lock through spring forces the clamping pin in rest position. A safety guarantee ! ELxBP-112 is pneumatic.

> This zero point system is in hardened steel (ELABP-112), or treated stainless steel (ELIBP-112).

> The unit can be equipped with a blow-out system (-S), an unlocking control system (-C) and an indexing system (-I).

> The set screws, and their cover caps, the seals and the indexing pin are delivered with the module.

The respective clamping pins are:

TELB-112 pull-stud pin

TDELB-112 positioning pin

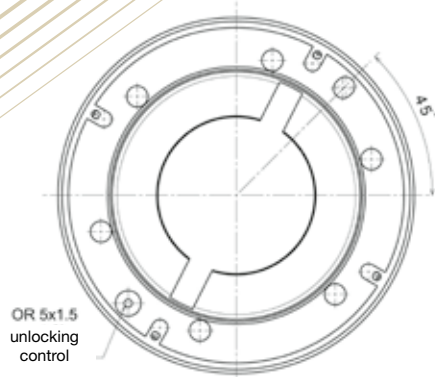
TCELB-112 centering pin

For clamping pins, see pages 16 and 17

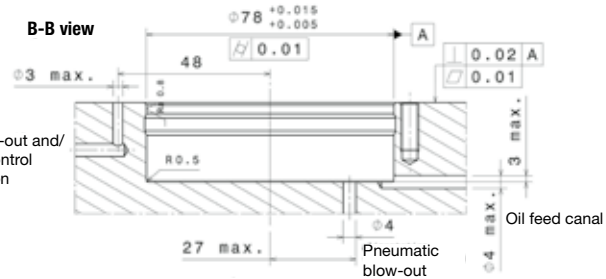
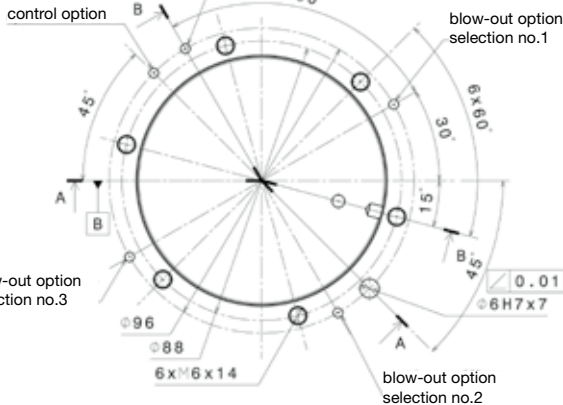
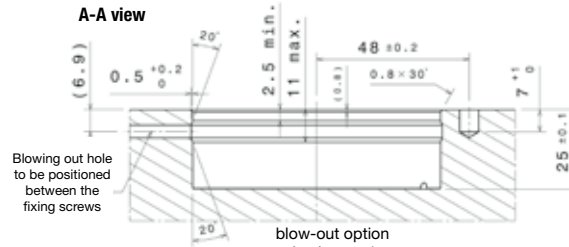
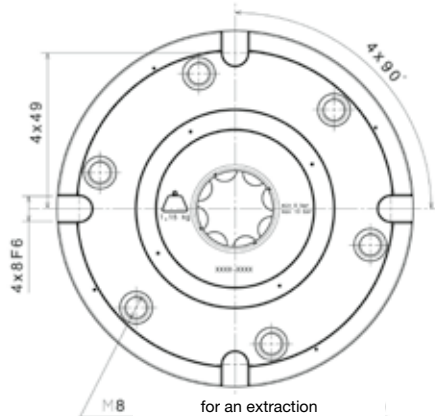
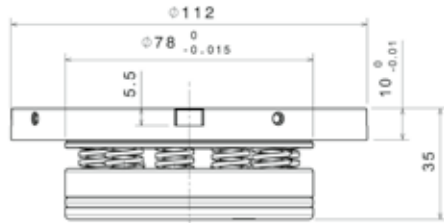
EASYLOCK

> ELxBP-112 (-S)(-C)(-I)

DIMENSIONS AND MOUNTING POSSIBILITIES



OR 5x1.5
unlocking
control

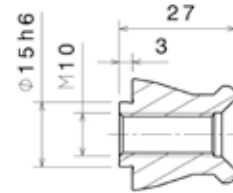
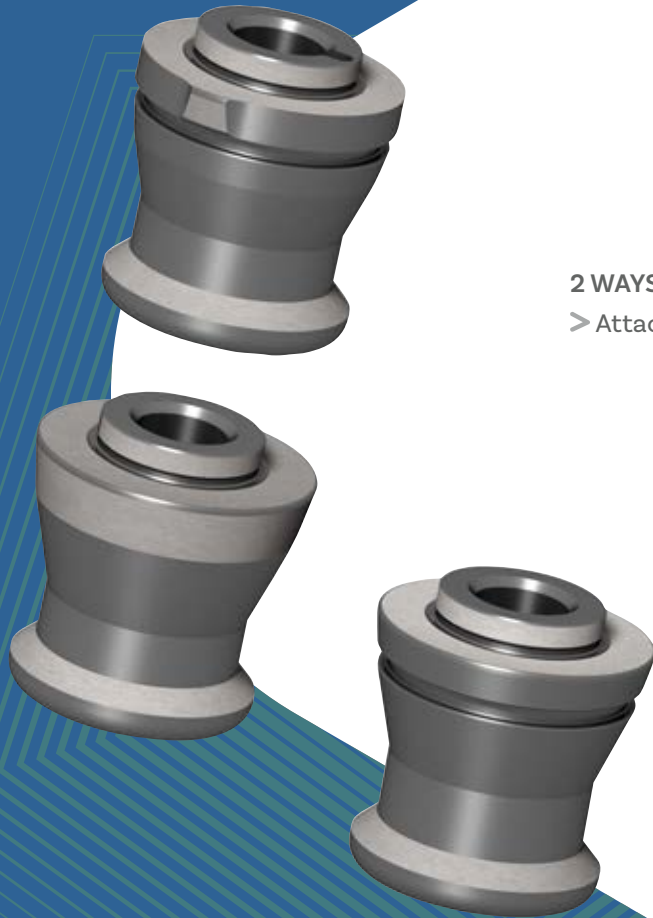


Technical Features	ELxBPP-112 (-S)(-C)(-I) Pneumatic
Repeat accuracy	0,005 mm
Operating pressure for opening	6 bars
Maximum pressure	10 bars
Pull-in force up to	18 kN/30 kN (Fhc M8/Chc M10)
Holding force	10 kN
Weight with set screws	1.09 kg

EASYLOCK

> CLAMPING PINS

FOR EASYLOCK WITH CLAMPING
BALLS ELxBP-112

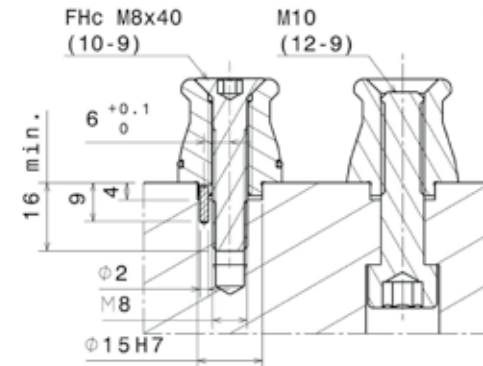


TDELB-112 clamping pin only



2 WAYS TO SCREW THE CLAMPING PINS :

> Attachment of a M10 screw from below or a FHc M8 screw from above



EASYLOCK

> CLAMPING PINS INSTALLATION AND POSITIONING

Centering pin

TCELB-112



Ø15 h6



Positioning pin

TDELB-112



Ø15 h6

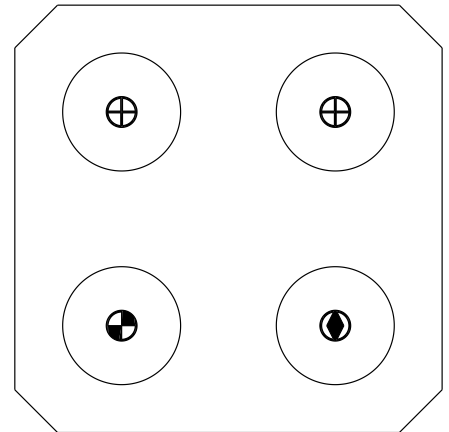
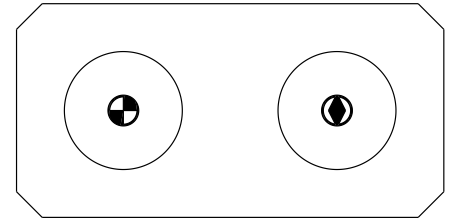


Pull-stud pin

TELB-112



Ø15 h6



EASYLOCK

> ELxBx2-112 (-S)(-C)(-I)



Technical Features

The Easylock ELxBx2-112 clamping module positions and clamps workpieces or fixtures with a repeat accuracy of less than 5 μm .

> EASYLOCK systems lock through spring forces the clamping pin in rest position. A safety system guarantee. ELxBH2-112 can be opened hydraulically and ELxBP2-112 pneumatically.

> This zero point system is in hardened steel (ELABx2-112), or treated stainless steel (ELIBx2-112).

> The unit can be equipped with a blow-out system (-S), an unlocking control system (-C), or an indexing system (-I).

> The set screws, their cover caps, the seals and the indexing pin are delivered with the module.

The respective clamping pins are:

TELB2-112 pull pin

TDELB2-112 positioning pin

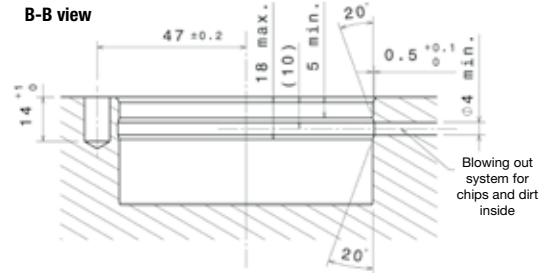
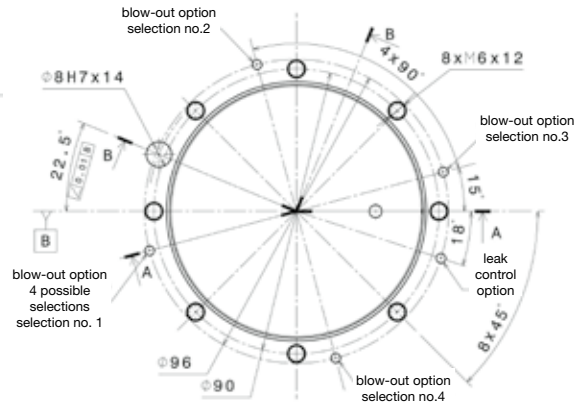
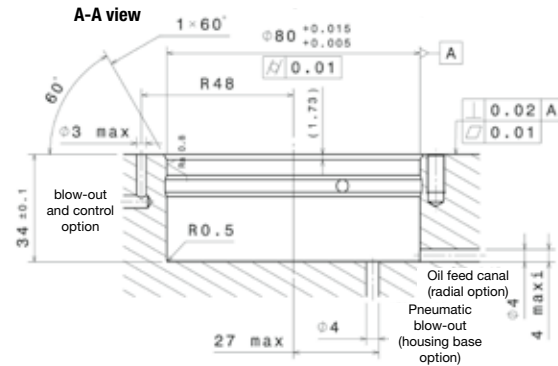
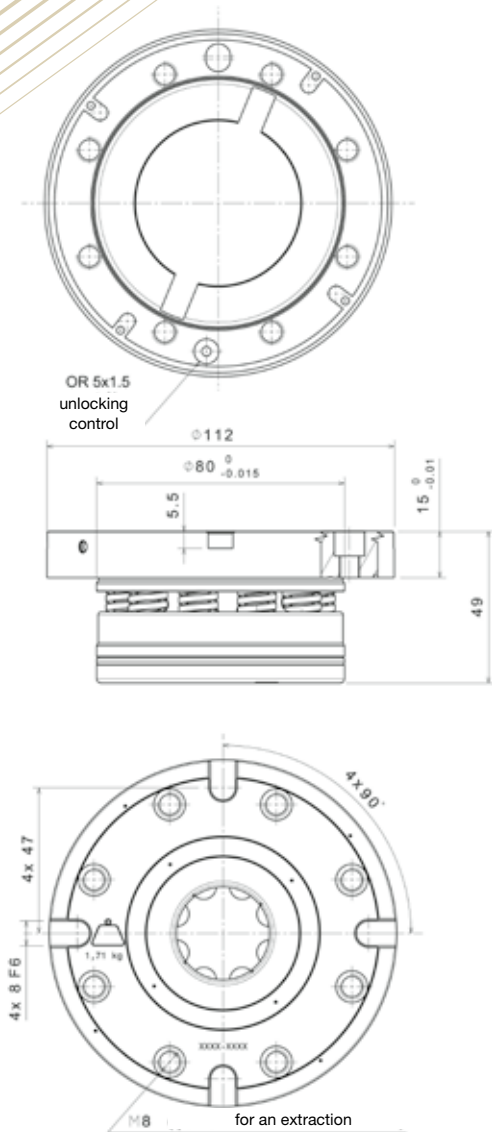
TCELB2-112 centering pin

For clamping pins, see pages 20 and 21

EASYLOCK

> ELxBx2-112 (-S)(-C)(-I)

DIMENSIONS AND MOUNTING POSSIBILITIES

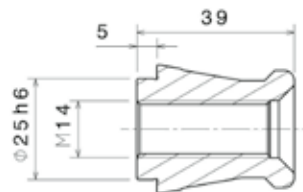
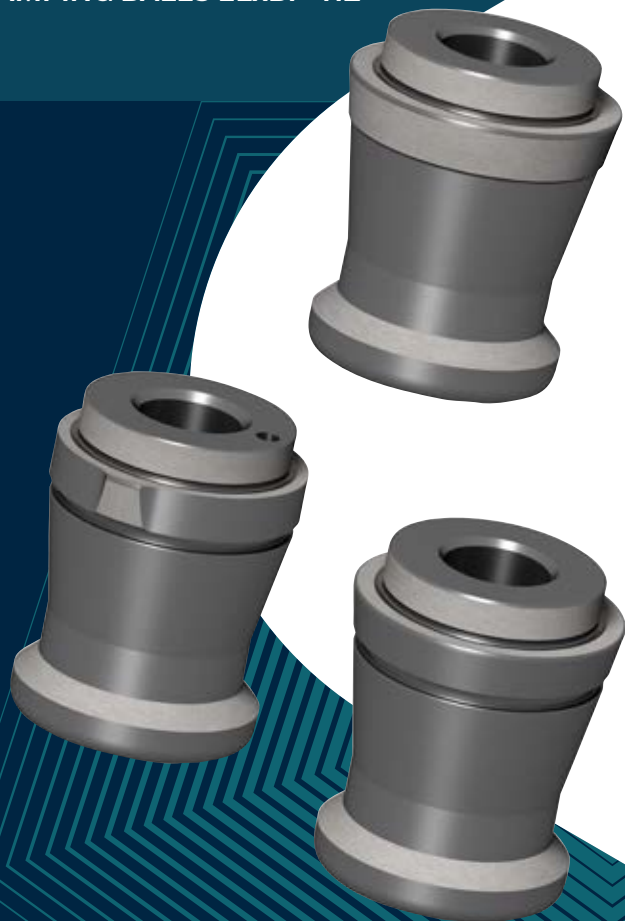


Technical Features	ELxBHx2-112 (-S)(-C)(-I) Hydraulic	ELxBPx2-112 (-S) (-C)(-I) Pneumatic
Repeat accuracy	0,005 mm	0,005 mm
Operating pressure for opening	30 bars	8 bars
Maximum pressure	60 bars	12 bars
Pull-in force up to	40 kN/50 kN (FHc M12/CHc M14)	40 kN/50 kN (FHc M12/CHc M14)
Holding force	20 kN	17 kN
Weight with set screws	1.75 kg	1.75 kg

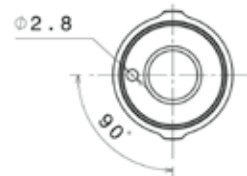
EASYLOCK

> CLAMPING PIN ACCESSORIES

FOR EASYLOCK WITH
CLAMPING BALLS ELxBP-112

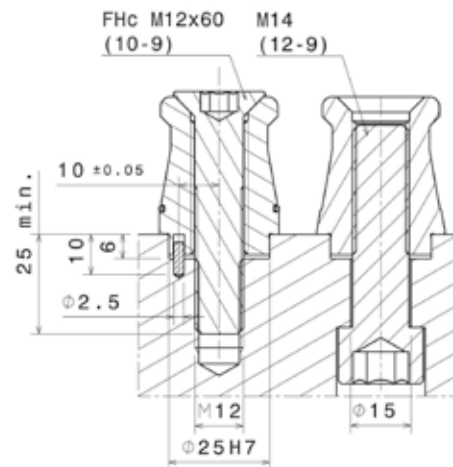


TDELB2-112 clamping pin only



2 WAYS TO SCREW THE CLAMPING PINS :

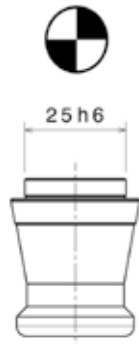
> Attachement of an M10 screw from below or a FHc M8 screw from above



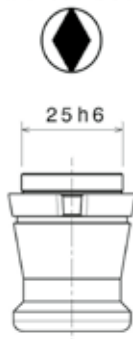
EASYLOCK

> CLAMPING PINS INSTALLATION AND POSITIONING

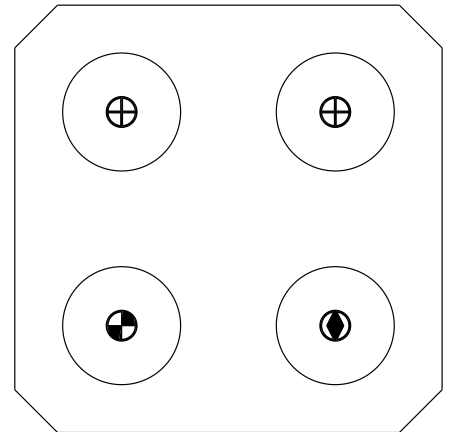
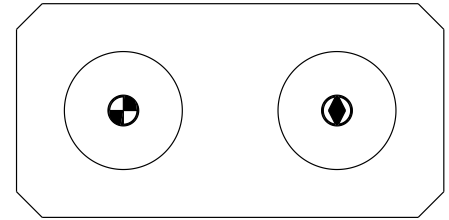
Centering pin
TCELB2-112



Positioning pin
TDELB2-112



Pull-stud pin
TELB2-112





Technical Features

The Easylock ELxBxG-112 clamping module positions and clamps workpieces or fixtures with a repeat accuracy of less than 5 µm.

- > EASYLOCK systems lock through spring forces the clamping pin in rest position. A safety system guarantee. ELxBHG-112 can be opened hydraulically, ELxBPG-112 pneumatically.
- > This zero point system is in hardened steel (ELABxG-112), or treated stainless steel (ELIBxG-112).
- > The thickness of this module has been reduced to gain more height.
- > The unit can be equipped with a blow-out system (-S), an unlocking control system (-C), or an indexing system (-I).
- > The set screws, their cover caps, the seals and the indexing pin are delivered with the module.

The respective pulling devices are:

TELBG-90M10 or M12 pull-stud pin

TDELBG-90-M10 or M12 positioning pin

TCELBG-90-M10 or M12 centering pin

For clamping pins, see pages 26 and 27



Technical Features

The Easylock ELxBxG-90 clamping module positions and clamps workpieces or fixtures with a repeat accuracy of less than 5 µm.

- > EASYLOCK systems lock through spring forces the clamping pin in rest position. A safety system guarantee. ELxBHG-90 can be opened hydraulically, ELxBPG-90 pneumatically.
- > This zero point system is in hardened steel (ELABxG-90), or treated stainless steel (ELIBxG-90).
- > The thickness of this module has been reduced to gain more height.
- > The unit can be equipped with a blow-out system (-S), an unlocking control system (-C), or an indexing system (-I).
- > The set screws, their cover caps, the seals and the indexing pin are delivered with the module.

The respective clamping pins are:

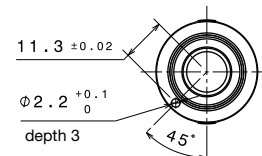
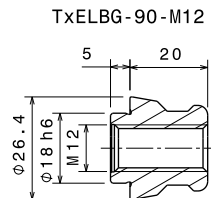
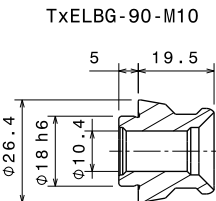
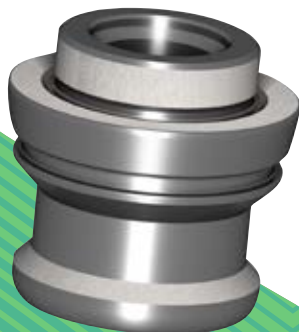
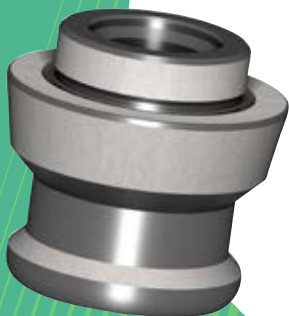
- TELBG-90-M10 or M12 pull-stud pin
- TDELBG-90-M10 or M12 positioning pin
- TCELBG-90-M10 or M12 centering pin

For clamping pins, see pages 26 and 27

EASYLOCK

> CLAMPING PINS

FOR EASYLOCK WITH Ø112 AND Ø90
CLAMPING BALLS



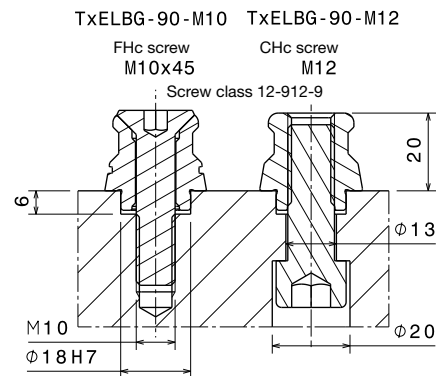
CLAMPING PINS FOR:

- > ELxBxG-112
- > ELxBxG-90

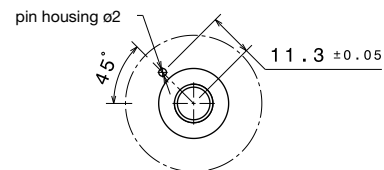
2 WAYS TO SCREW THE CLAMPING PINS :

- > Attachement of a M12 screw from below a FHC M10 x 40 screw from above

There are 6 different clamping pins, 3 M10 clamping pins, 3 M12 clamping pins



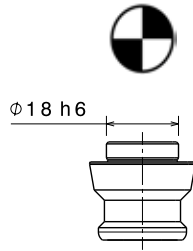
Clamping pin TDELBG-90-Mxx only



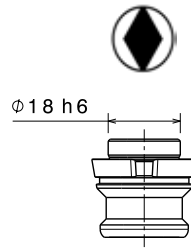
EASYLOCK

> CLAMPING PINS INSTALLATION AND POSITIONING

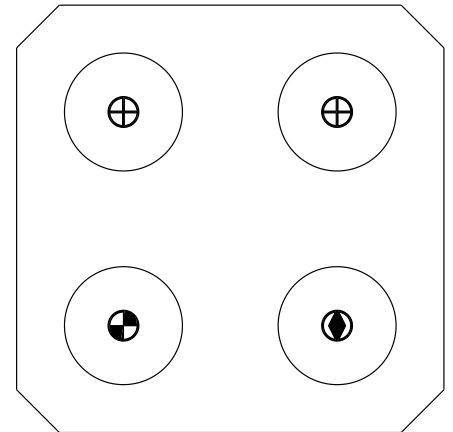
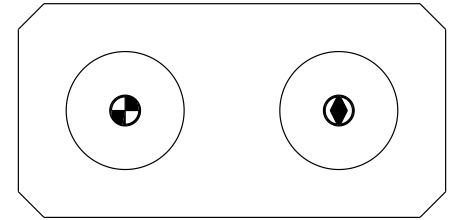
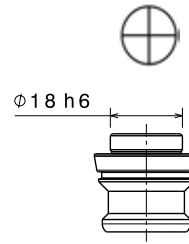
Centering pin
TGELBG-90-Mxx



Positioning pin
TDELBG-90-Mxx



Pull-stud pin
TELBG-90-Mxx





Technical Features

The Easylock ELxBxP-62 clamping module positions and clamps workpieces or fixtures with a repeat accuracy of less than 5 µm.

> EASYLOCK systems lock through spring forces the clamping pin in rest position. A safety system guarantee. ELxBHP-62 can be opened hydraulically and ELxBPP-62 pneumatically.

> This zero point system is in hardened steel (ELABxP-62), or treated stainless steel (ELIBxP-62).

> The unit can be equipped with a blow-out system (-S), an unlocking control system (-C), or an indexing system (-I).

> The set screws, their cover caps, the seals and the indexing pin are delivered with the module.

The respective clamping pins are:

TELB-62 pull-stud pin

TDELB-62 positioning pin

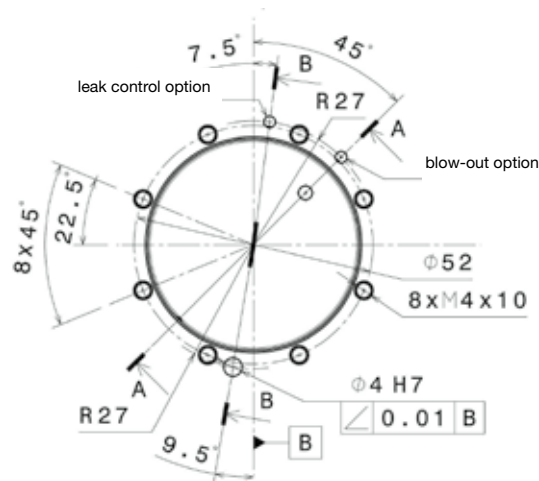
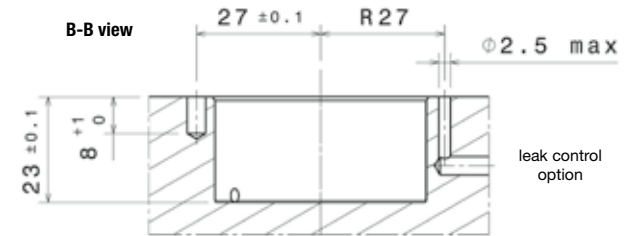
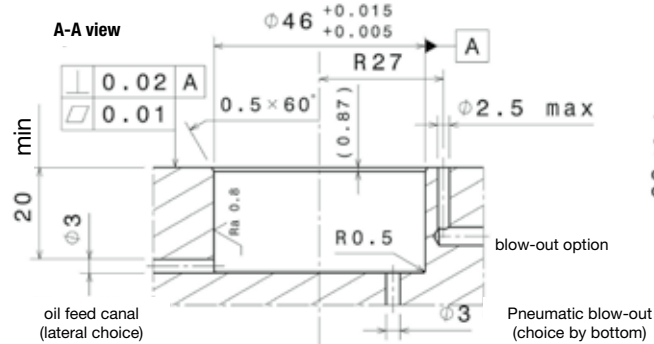
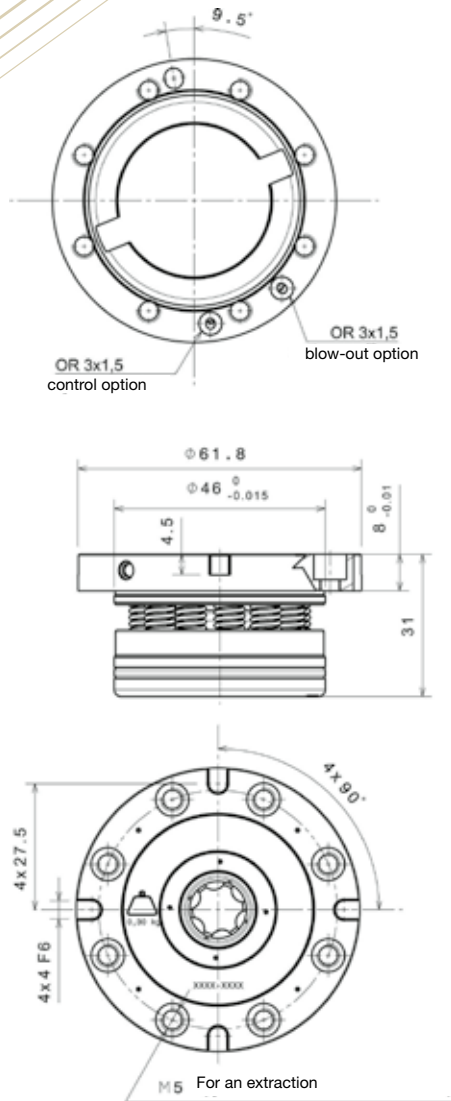
TCELB-62 centering pin

For clamping pins, see pages 32 and 33

EASYLOCK

> ELxBxP-62 (-S)(-C)(-I)

DIMENSIONS AND MOUNTING POSSIBILITIES



Technical Features	ELxBxP-62 (-S) (-C)(-I) Hydraulic	ELxBxP-62 (-S) (-C)(-I) Pneumatic
Repeat accuracy	0,005 mm	0,005 mm
Operating pressure for opening	30 bars	6 bars
Maximum pressure	60 bars	10 bars
Pull-in force up to	8 kN/12 kN (Chc M5/Chc M6)	8 kN/12 kN (Chc M5/Chc M6)
Holding force	1.6 Kn	1 kN
Weight with set screws	330 gr	320 gr



Technical Features

The Easylock ELxBxG-112 clamping module positions and clamps workpieces or fixtures with a repeat accuracy of less than 5 µm.

> This model for flanging and its system lock through spring forces the clamping pin in rest position - a safety guarantee!

> ELxBPF-62 is pneumatic and ELxBHF-62 can be opened hydraulically, in hardened steel (ELABxF-62) or treated stainless steel (ELIBxF-62).

> The unit can be equipped with a blow-out system (-S), an unlocking control system (-C), or an indexing system (-I).

> The set screws, their cover caps, the seals and the indexing pin are delivered with the module.

The respective clamping pins are:

TELB-62 - pull-stud pin

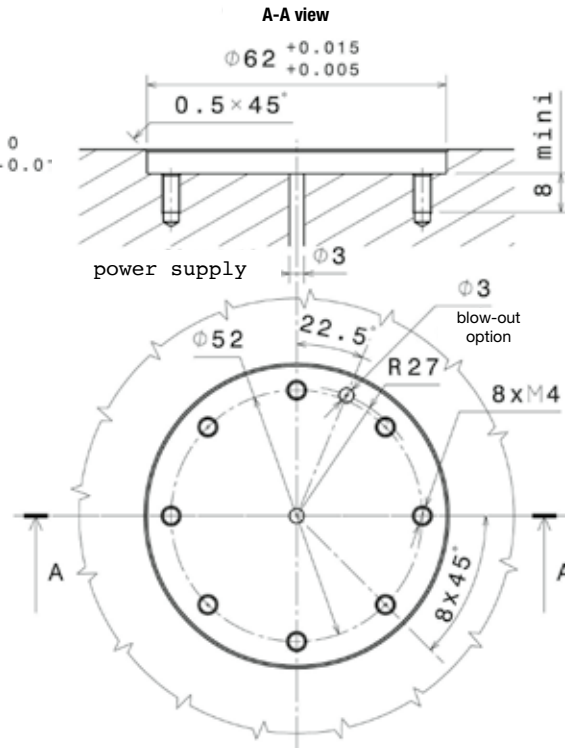
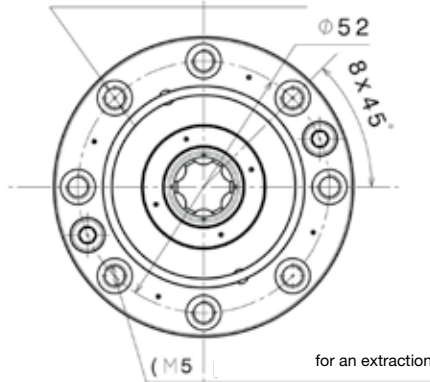
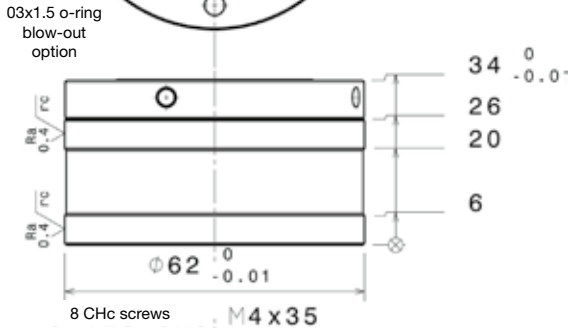
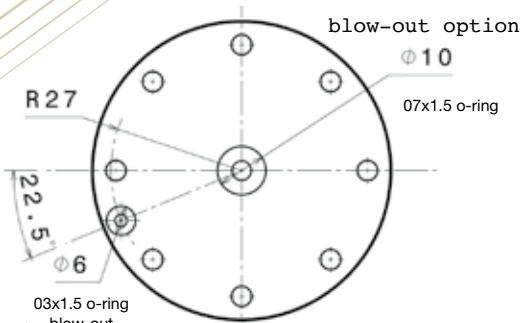
TDELB-62 - positioning pin

TCELB-62 - clamping pin

EASYLOCK

> ELxBxF-62 (-S)(-C)(-I)

DIMENSIONS AND MOUNTING POSSIBILITIES

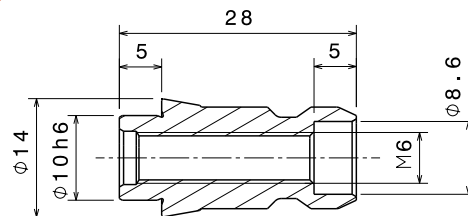


Technical Features	ELxBxF-62 (-S)(-C)(-I) Hydraulic	ELxBxF-62 (-S)(-C)(-I) Pneumatic
Repeat accuracy	0,005 mm	0,005 mm
Operating pressure for opening	30 bars	6 bars
Maximum pressure	60 bars	10 bars
Pull-in force up to	8 kN/12 kN (CHc M5/CHc M6)	8 kN/12 kN (CHc M5/CHc M6)
Holding force	1.6 Kn	1 kN
Weight with set screws	620 gr	610 gr

EASYLOCK

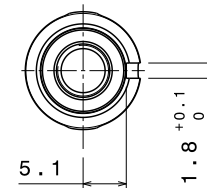
> CLAMPING PIN ACCESSORIES

FOR EASYLOCK WITH
Ø62 CLAMPING BALLS



éch: 2/1

TDELB-62 clamping only for a 01.5 alignment bore

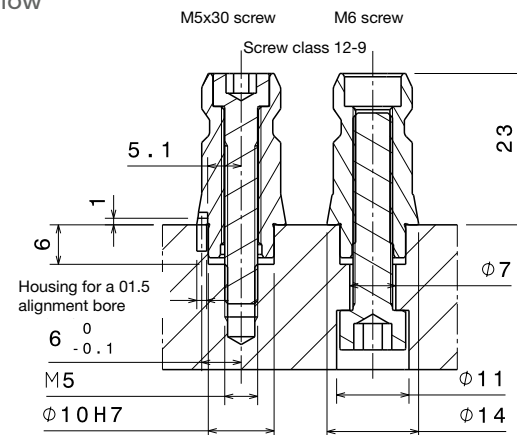


CLAMPING PINS FOR:

> ELIBxx-62

2 WAYS TO SCREW THE CLAMPING PINS :

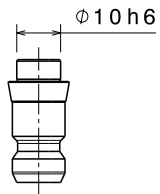
> Attachement of a M6 screw from below
a CHc M5 screw from above



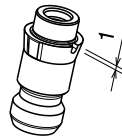
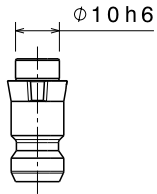
EASYLOCK

> CLAMPING PINS INSTALLATION AND POSITIONING

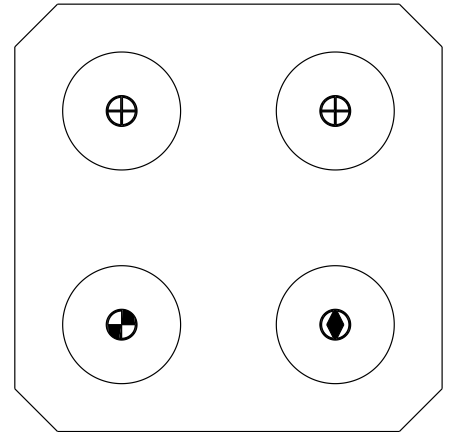
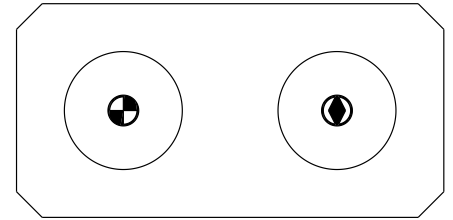
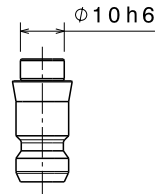
Centering pin
TCELB - 62



Positioning pin
TDELB - 62



Pull-stud pin
TELB - 62



EASYLOCK WITH CLAMPING SLIDES

> ELID-x-138 (-S)(-I)



Technical Features

The Easylock ELID-x-138 clamping module positions and clamps workpieces or fixtures with a repeat accuracy of less than 5 μm .

- > The pins are locked by the clamping slides inside the EASYLOCK.
- > EASYLOCK system locks the clamping pins in rest position. A safety system guarantee.
- > Unclamping is pneumatic at 6 bars. The EASYLOCK can be equipped with a blow-out system (-S), an unlocking control system (-C), or an indexing system (-I).

Our three respective clamping pin models:

TELD: Centering Pin

TCELD: Positioning Pin

TDELD: Pull-stud Pin

For pallets or base plates with hydraulic and/or pneumatic clamping fixtures on, our Easylock devices are available as follows:

ELID - 1 - 138: Easylock with 1 female coupler

ELID - 2 - 138: Easylock with 2 female couplers

ELID - 3 - 138: Easylock with 3 female couplers

The female couplers can be supplied as an extra.

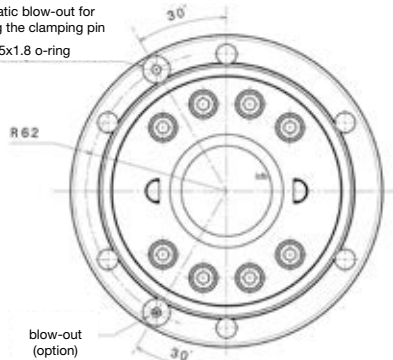
For clamping pins, see pages 36 and 37

EASYLOCK

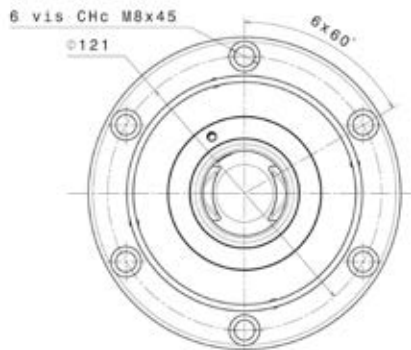
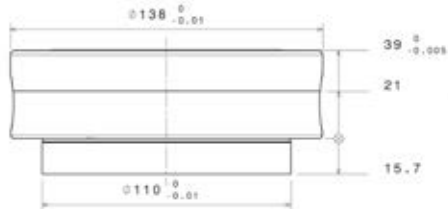
> ELID-x-138 (-S)(-I)

DIMENSIONS AND MOUNTING POSSIBILITIES

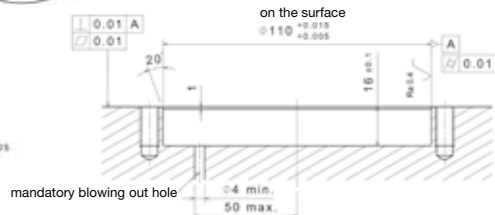
pneumatic blow-out for loosening the clamping pin
Ø8.5x1.8 o-ring



blow-out (option)



blow-out output

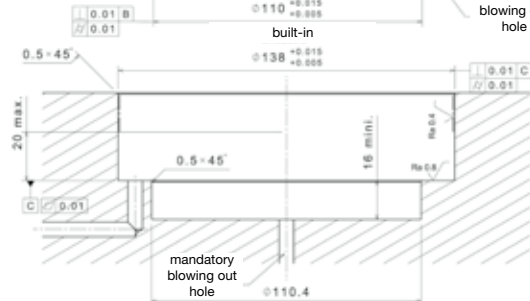


mandatory blowing out hole

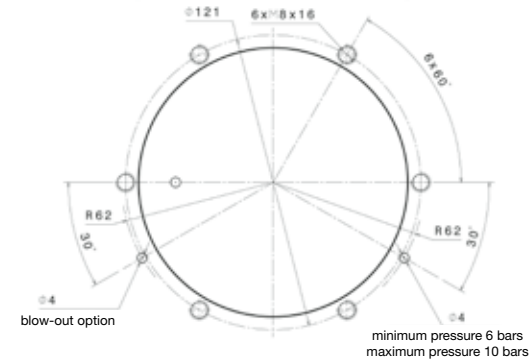
semi-recessed



mandatory blowing out hole



mandatory blowing out hole



blow-out option

minimum pressure 6 bars
maximum pressure 10 bars

Technical Features	ELID-x-138 (-S)(-I) Pneumatic
Repeat accuracy	0,005 mm
Operating pressure for opening	6 bars
Maximum pressure	10 bars
Pull-in force up to	35 kN/50 kN (CHc M10/CHc M12)
Axial clamping force	5 kN
Weight with set screws	4.4 kg

EASYLOCK

> CLAMPING PIN ACCESSORIES

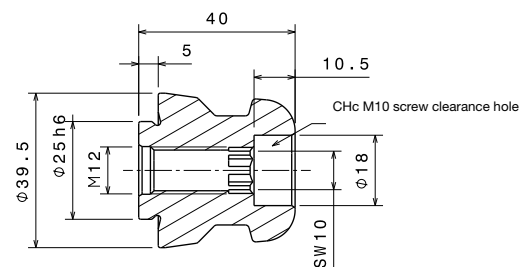
FOR EASYLOCK WITH $\varnothing 138$

CLAMPING SLIDES



CLAMPING PINS FOR:

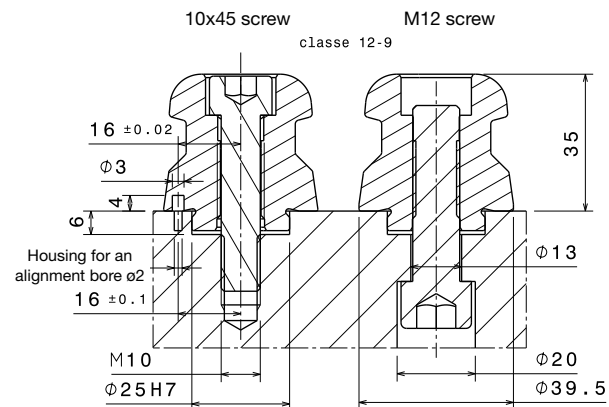
- > ELID-0-138 (-S)
- > ELID-1-138
- > ELID-2-138
- > ELID-3-138



TxE_{LD} clamping pin catalogue

2 WAYS TO SCREW THE CLAMPING PINS :

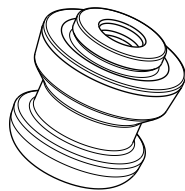
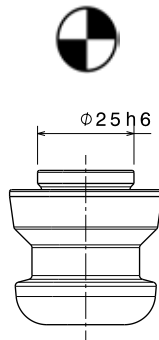
- > Attachement of an M12 screw from below
- or Crossing using a CHc M10 screw from above.



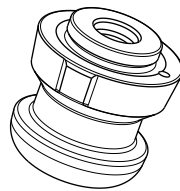
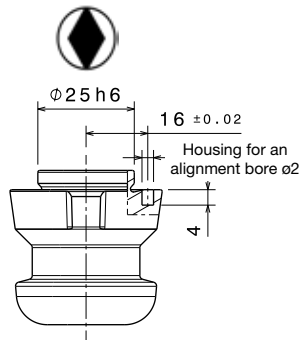
EASYLOCK

> CLAMPING PINS INSTALLATION AND POSITIONING

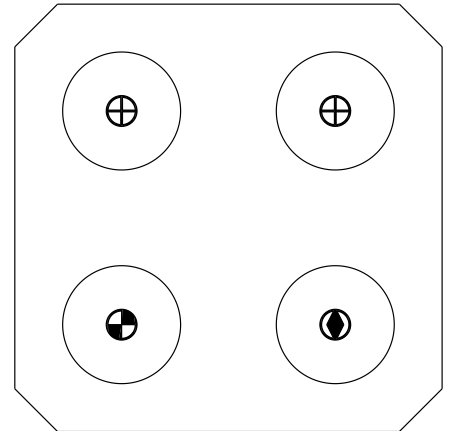
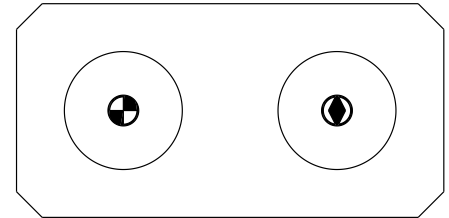
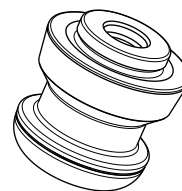
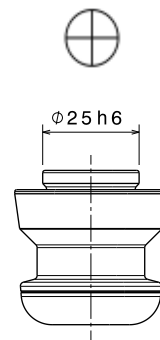
Centering pin
TCELD



Positioning pin
TDELD



Pull-stud pin
TELD



EASYLOCK > APPLICATIONS



Clamping vices and devices on an upper table with 6 EASYLOCK zero point systems.



EASYLOCK 138 with clamping slides on the pallet gripper of the robot EASYBOX L/R 250 for handling 250 kg pallets.

EASYLOCK > APPLICATIONS



Upper table with
2 EASYLOCK



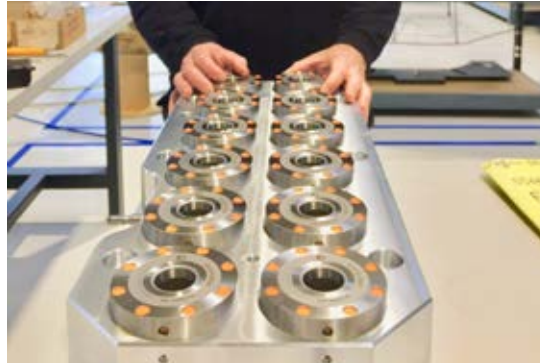
Upper table for automation
system



Upper table + EASYCLAMP vice



Upper table with 4 EASYLOCK



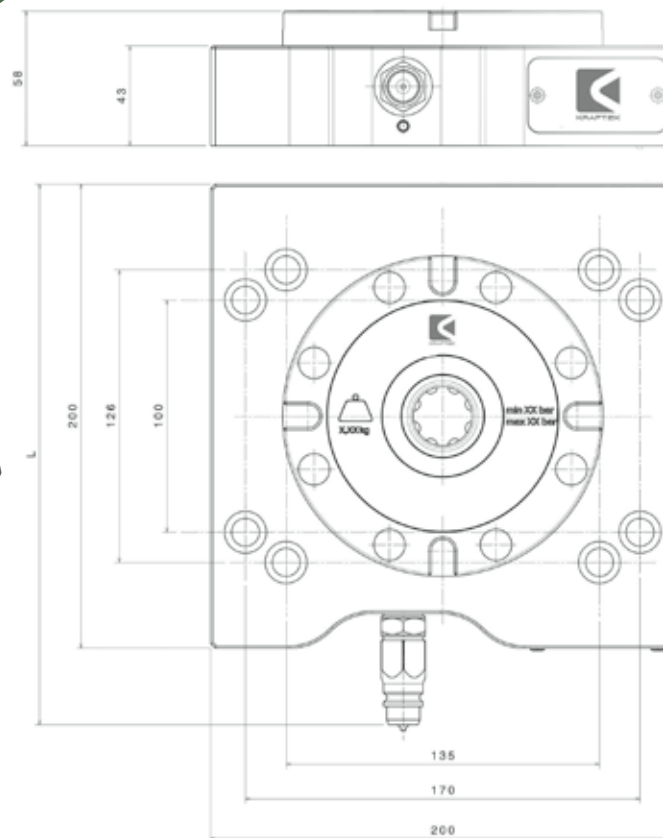
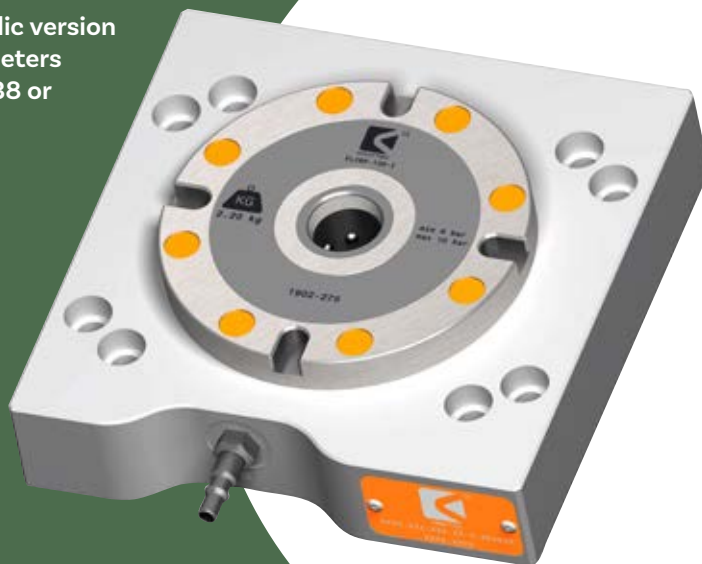
Upper table with 12 EASYLOCK

> Standard upper table solutions with zero point systems are shown on pages 40 to 43. We can also provide customised solutions adapted to specific workpieces or machining process.

UPPER TABLE IN ALUMINIUM > WITH 1 EASYLOCK

This upper table in aluminium has one EASYLOCK with indexing option for fixture positioning on the zero-point system.

Pneumatic or hydraulic version available in two diameters EASYLOCK ELxBxP-138 or ELxBx2-112



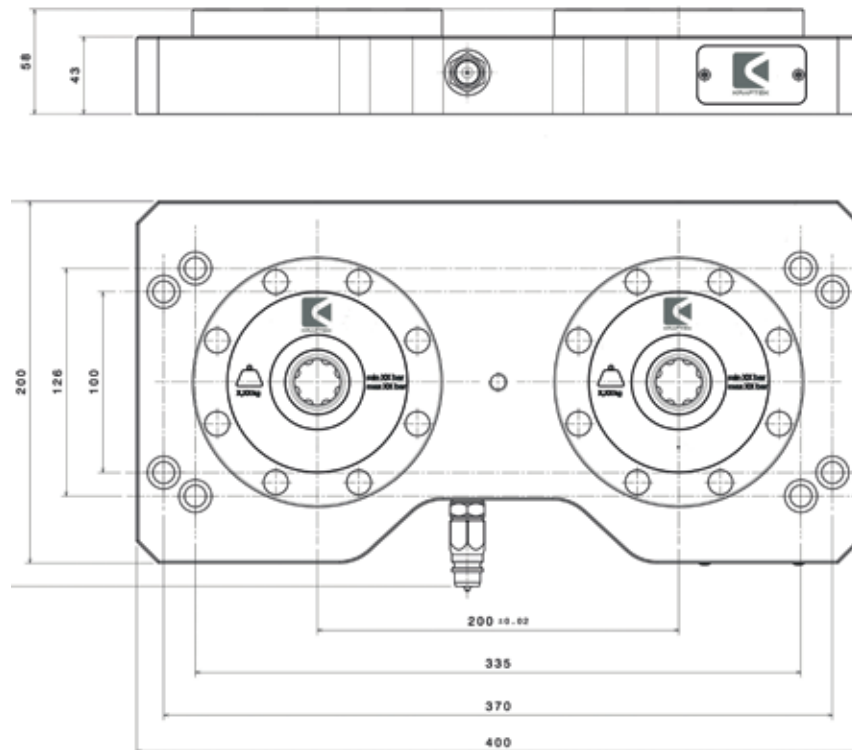
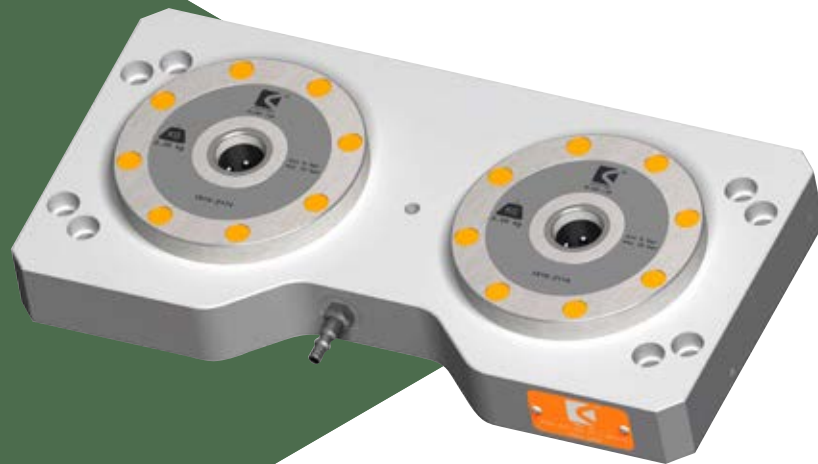
Reference :

> Aluminium pallet with 1 clamping pin 200 x 200
PF00.200.200.40-1-138 or PF00.200.200.40-1-212

References	TF00.200.200.58-1-BP138-I	TF00.200.200.58-1-BH138-I	TF00.200.200.58-1-BP2112-I	TF00.200.200.58-1-BH2112-I
Holding force	16 kN	25 kN	17 kN	20 kN
Repeat accuracy	0.01 mm	0.01 mm	0.01 mm	0.01 mm
Pressure	6 à 10 bars	30 à 60 bars	8 à 12 bars	30 à 60 bars
Weight	6.6 Kg	7.2 Kg	6.2 Kg	6.2 Kg

UPPER TABLE IN ALUMINIUM > WITH 2 EASYLOCKS

This upper table in aluminium has 2 EASYLOCK in pneumatic or hydraulic version. Available in two diameters EASYLOCK ELxBxP-138 or ELxBx2-112



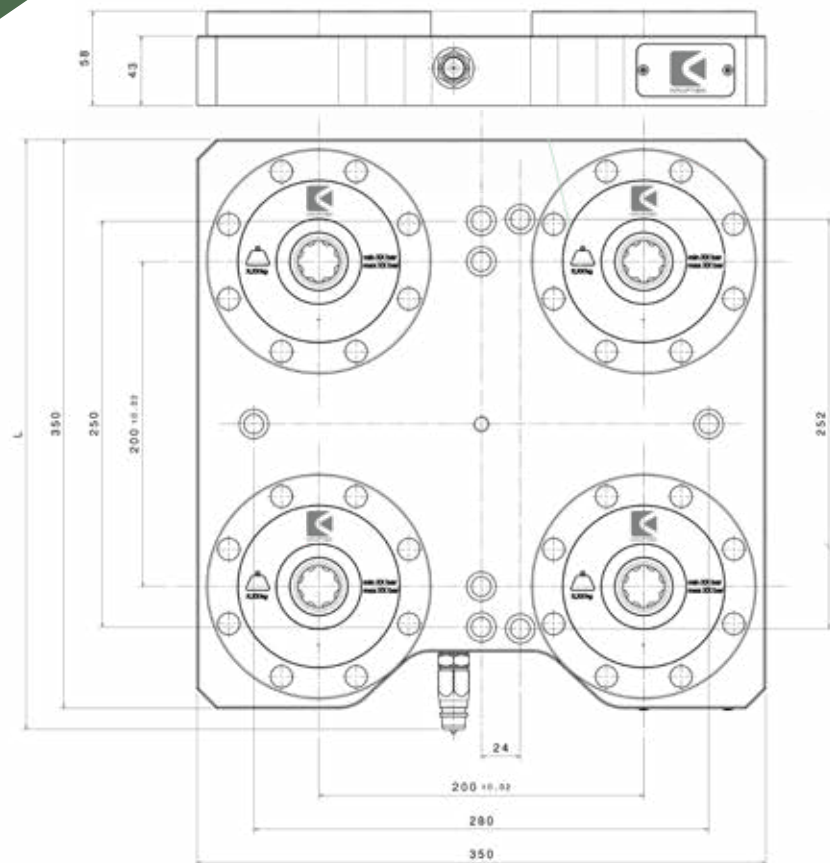
Reference :

> Aluminium pallets with 6 clamping pins
200 x 400 PF20.400.200.40-2-138 or
PF20.400.200.40-2-2112

References	TF20.400.200.58-2-BP1138	TF20.400.200.58-2-BH1138	TF20.400.200.58-2-BP21112	TF20.400.200.58-2-BH21112
Holding force	16 kN x 2	25 kN x 2	17 kN x 2	20 kN x 2
Repeat accuracy	0.01 mm	0.01 mm	0.01 mm	0.01 mm
Pressure	6 à 10 bars	30 à 60 bars	8 à 12 bars	30 à 60 bars
Weight	12.9 Kg	14.2 Kg	12 Kg	12 Kg

UPPER TABLE IN ALUMINIUM > WITH 4 EASYLOCK

This upper table in aluminium is equipped with 4 pneumatic or hydraulic EASYLOCK with EASYLOCK ELxBx-138 or ELxBx2-112



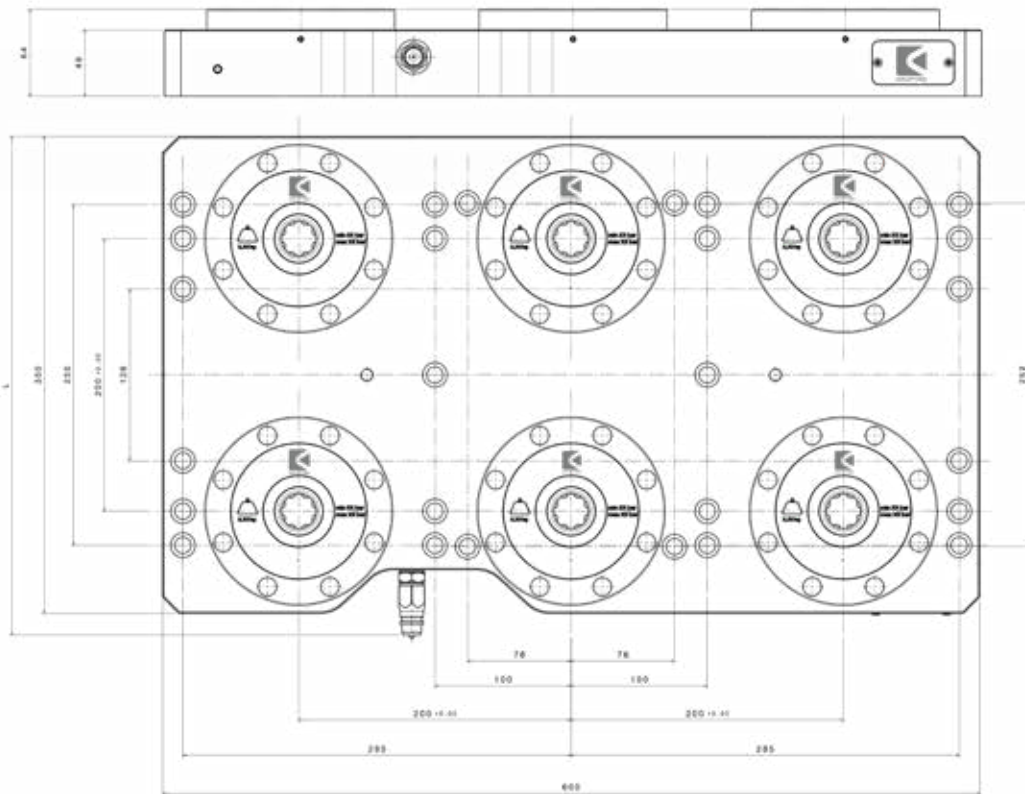
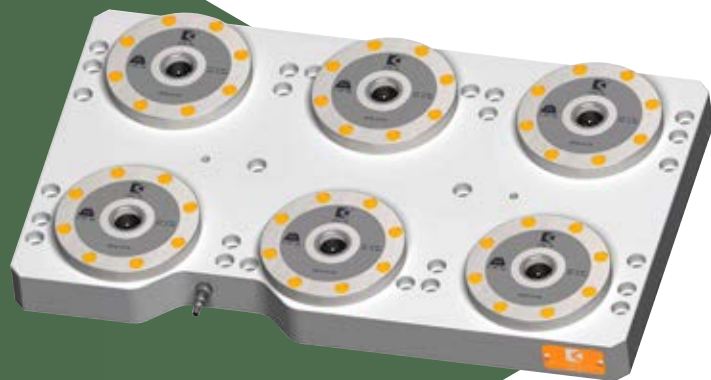
Reference :

> Pallet with clamping pins 350 x 350
PF20.350.350.40-4-4138
or PF20.350.350.40-4-2112

Références	TF20.350.350.58-4-BPI138	TF20.350.350.58-4-BHI138	TF20.350.350.58-4-BP2I112	TF20.350.350.58-4-BH2I112
Holding force	16 kN x 4	25 kN x 4	17 kN x 4	20 kN x 4
Repeat accuracy	0.01 mm	0.01 mm	0.01 mm	0.01 mm
Pression	6 à 10 bars	30 à 60 bars	8 à 12 bars	30 à 60 bars
Weight	22.3 Kg	24.7 Kg	20.5 Kg	20.5 Kg

UPPER TABLE IN ALUMINIUM > WITH 6 EASYLOCK

This upper table in aluminium has 6 EASYLOCK in pneumatic or hydraulic version. Available in two diameters EASYLOCK ELxBxP-138 or ELxBx2-112



Reference :

> Aluminium pallets with 6 clamping pins
350 x 650
PF20.600.350.40-6-138
or PF20.600.350.40-6-2112

Références	TF20.600.350.64-6-BP1138	TF20.600.350.64-6-BH1138	TF20.600.350.58-6-BP2112	TF20.600.350.58-6-BH2112
Holding force	16 kN x 6	25 kN x 6	17 kN x 6	20 kN x 6
Repeat accuracy	0.01 mm	0.01 mm	0.01 mm	0.01 mm
Pression	6 à 10 bars	30 à 60 bars	8 à 12 bars	30 à 60 bars
Weight	39.7 Kg	43.4 Kg	37 Kg	37 Kg

CONNECTED TABLES

> EASYCONNECT

Our connected tables EASYCONNECT clamp your workpieces directly to the zero point systems through clamping devices for a quick-change of series in your production. It is possible to work on different clamping zones making a great variety of fixtures combinations.

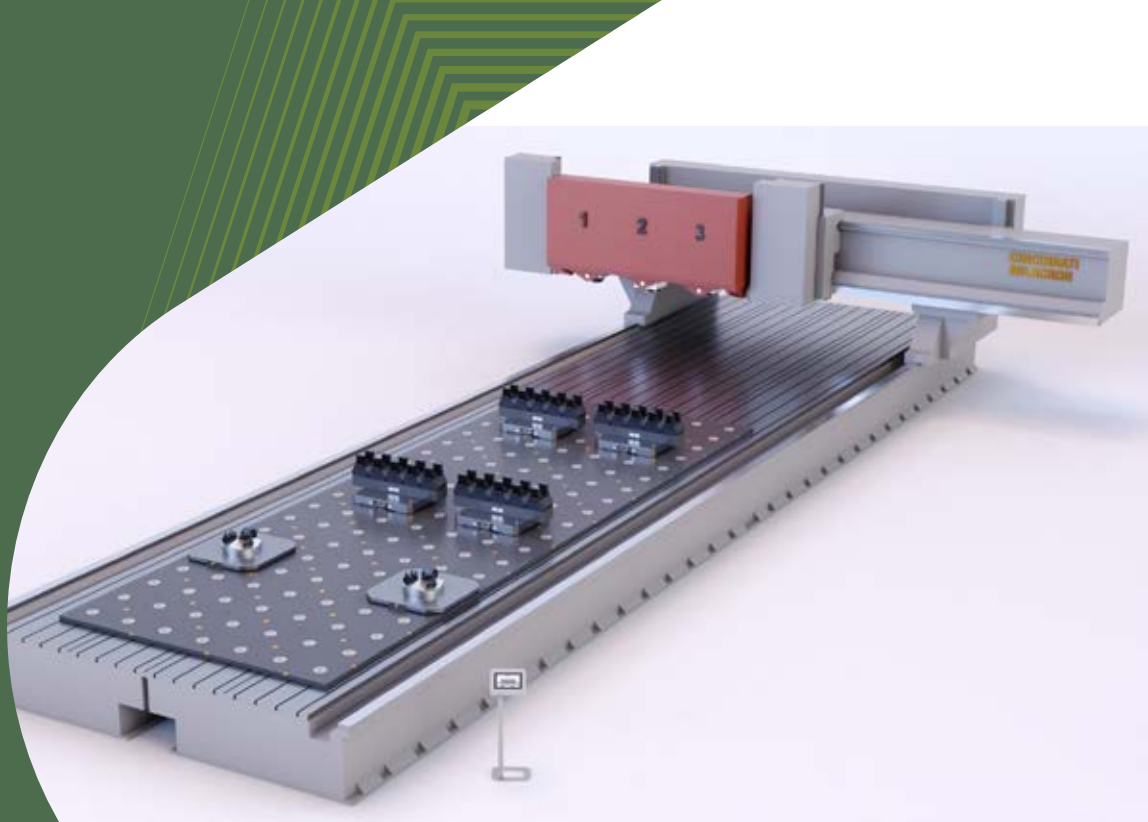
The dimensions of the EASYCONNECT tables are defined according to the customer's needs and the dimensions of the machine table. Multiple combinations can be realized with EASYCONNECT tables.

Benefits

- > EASYCONNECT tables are arranged in a mesh and connected to each other by bridges and plugs.
- > It is possible to add additional modules according to customer's requests.

AS AN OPTION:

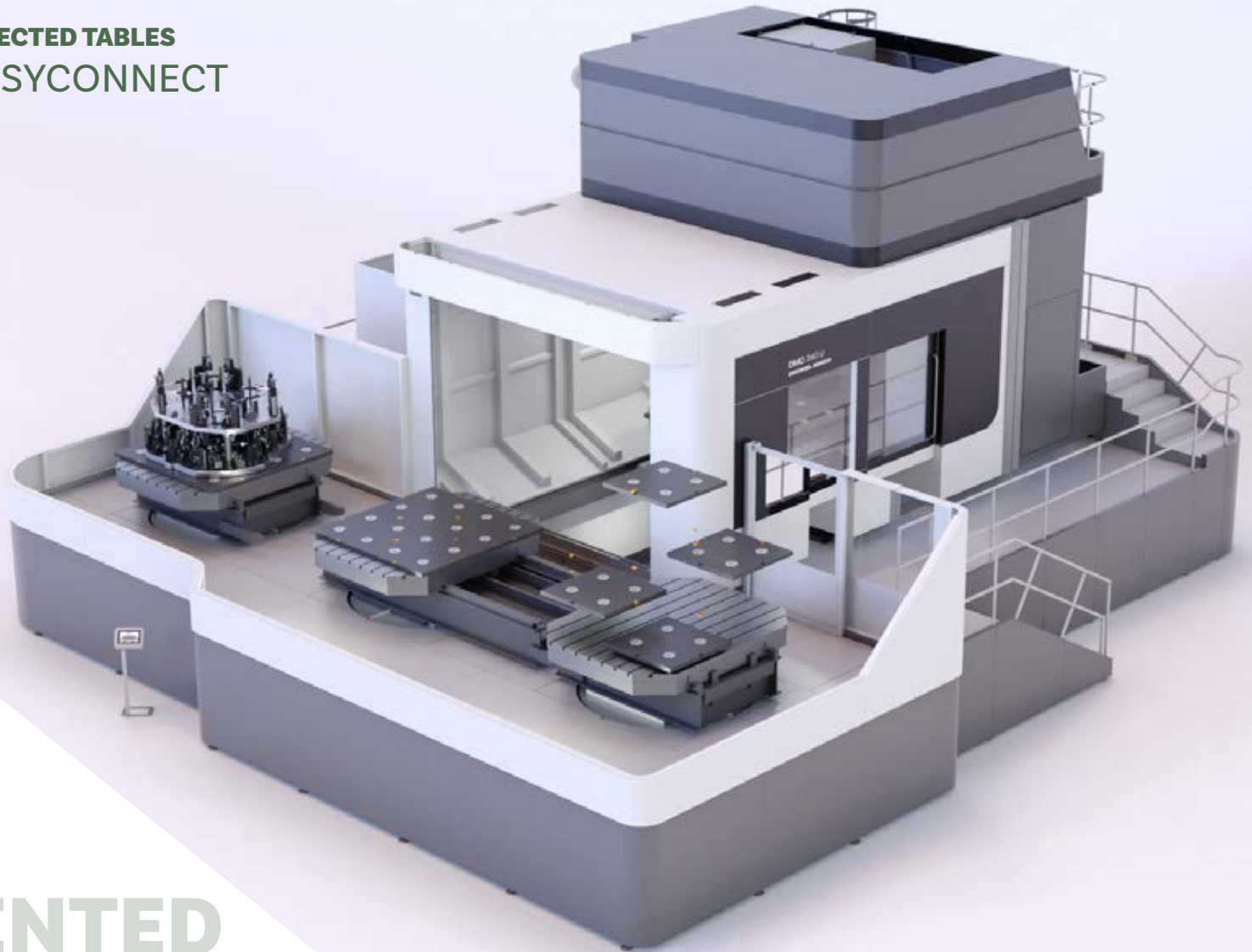
- > EASYCONNECT tables have functions such as blowing and EASYLOCK chuck opening control.
- > EASYCONNECT tables are controlled by a PLC with touch screen or a M function on the control unit of the machine.
(contact us).



SOLUTION

CONNECTED TABLES
> EASYCONNECT

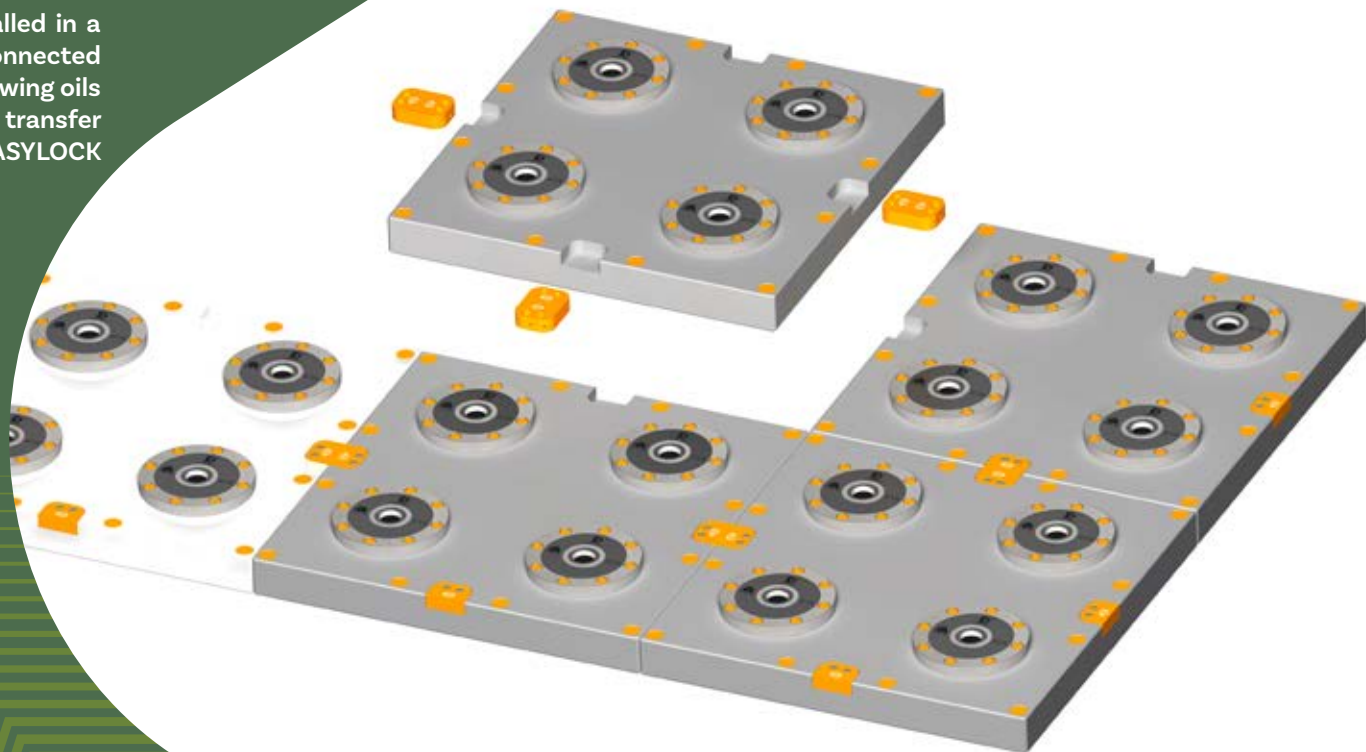
PATENTED



PATENTED

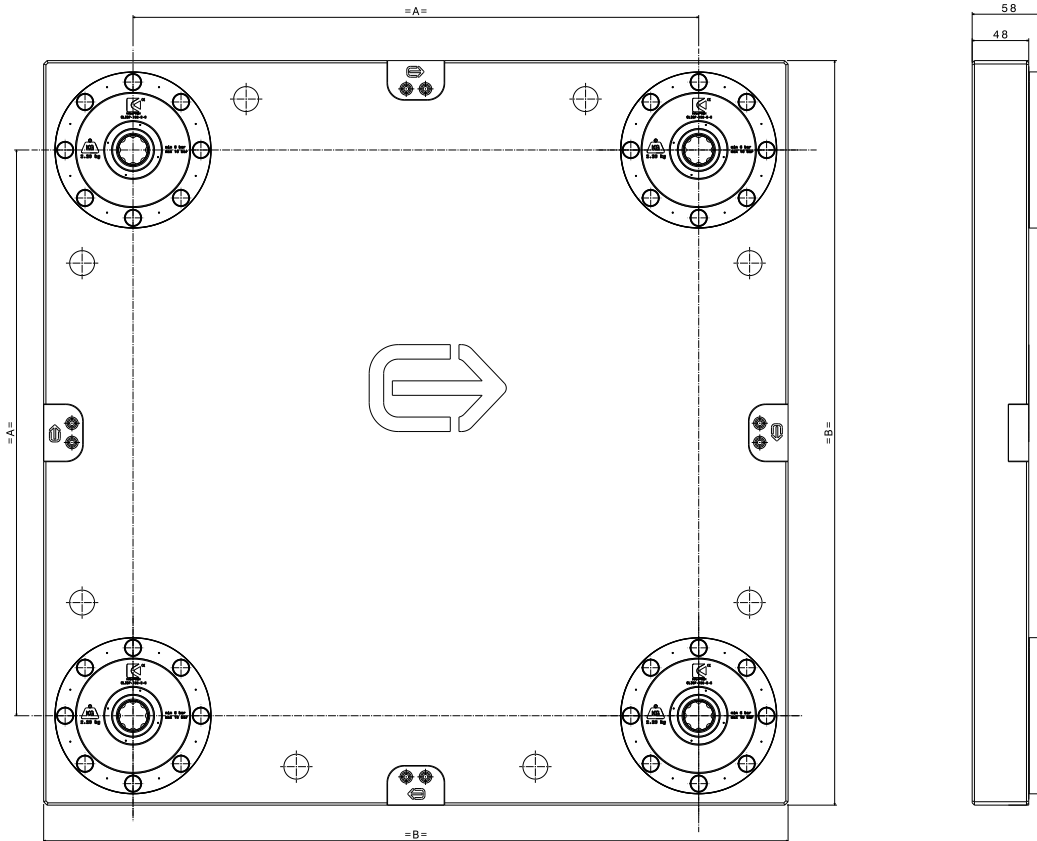
CONNECTED TABLES > EASYCONNECT

EASYCONNECT are installed in a grid pattern, they are connected by bridges and plugs allowing oils and pneumatic blow out transfer and open check of the EASYLOCK zero point systems.



CONNECTED TABLES

> EASYCONNECT



Type	Center spacing between axes	Dimensions (B)	Overall height	
			Plate	With zero point
TC 25	250 mm	500 mm	48	58
TC 30	300 mm	600 mm		
TC 40	400 mm	558 mm		
TC 50	500 mm	658 mm		

CLAMPING FIXTURES

> 4-SIDED FIXTURES

Clamping tower out of cast aluminium or iron, machined and equipped with EASYLOCK zero point systems diameter 138.

Pallet positioning repeatability < 5 µm.

Pallet holding force: 4 x 1.6 kN in positive clamping.

Benefits

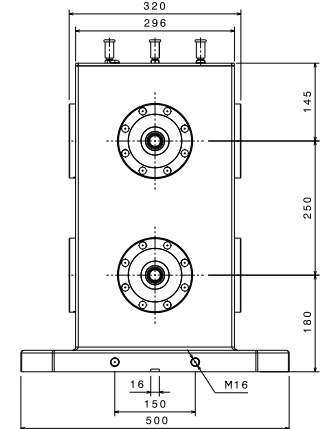
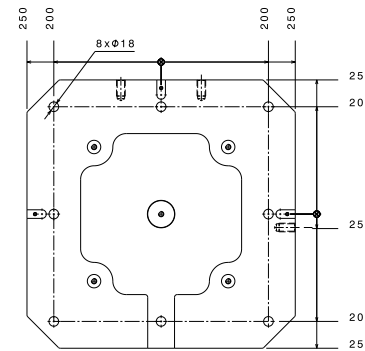
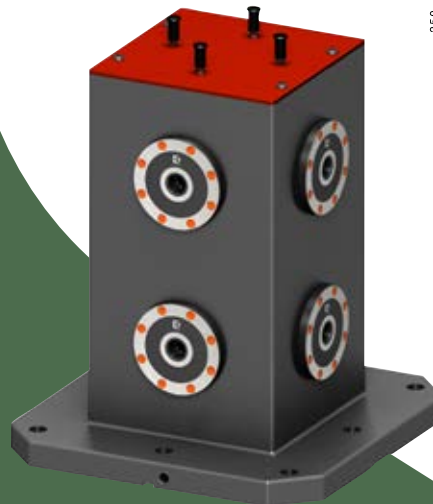
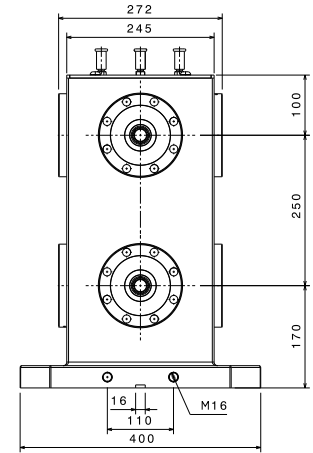
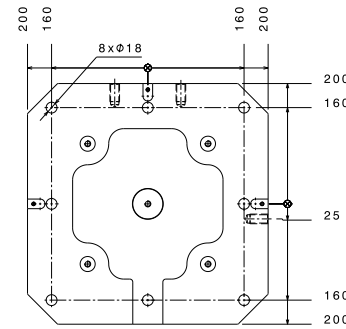
- > Very fast changeover of fixtures, no set-up.
- > Can be used in different machines.
- > Increase productivity.
- > Decrease machine shutdown time.

Specifications :

> Quick clamping/unclamping of pallets and fixtures.

Optional extras:

- > Hydraulic fluid flow, 250 bar maximum.
- > Customer can choose the type of oil feed canal for the modular clamping fixture (swivel coupling, center boring or manual operation)

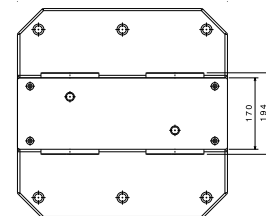
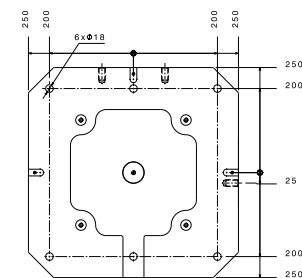
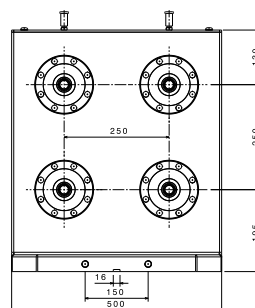
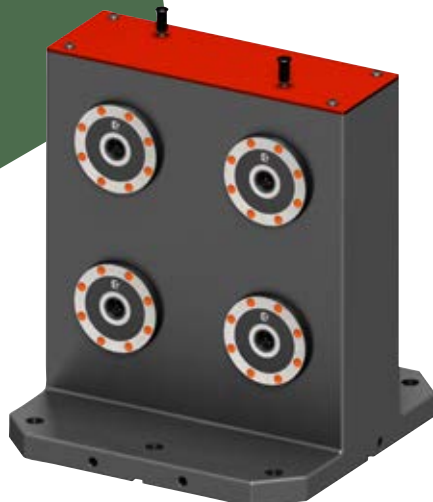
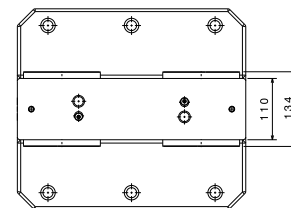
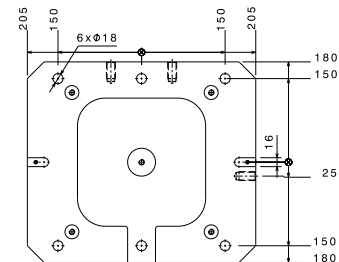
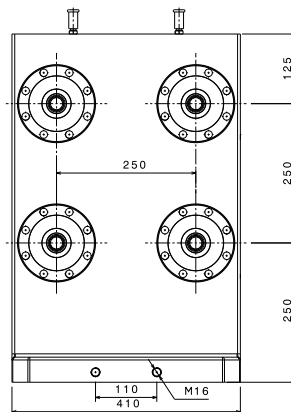


CLAMPING FIXTURES

> 2-SIDED FIXTURES

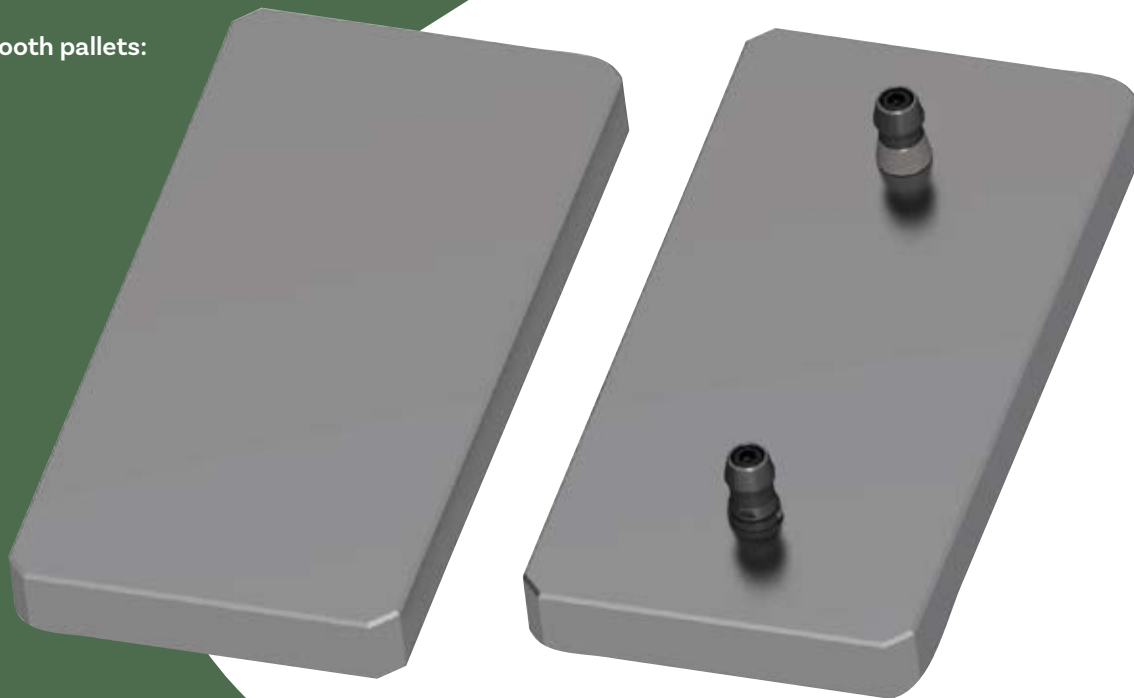
DOUBLE SIDED

ANGLE PLATES



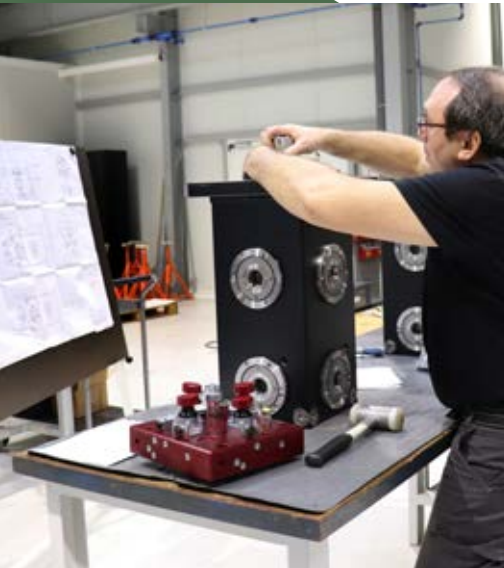
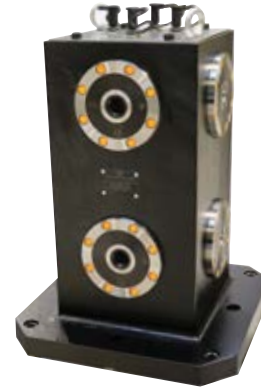
CLAMPING FIXTURES > PALLETS

Delivery of smooth pallets:



> According to customer's needs pallets can be customised in steel or aluminium. Their dimensions and the center distance can be adapted to customer's fixtures.

CLAMPING FIXTURES > APPLICATIONS



Please visit our website www.engineering-data.fr
to discover our products and solutions.



engineering data

Innovation is our job

Rue Claude Chappe Z.A. La Haute Limouillère 37230 FONDETTES
Tél : +33 (0)2 47 42 22 40 - Fax : +33 (0)2 47 49 94 09

www.engineering-data.fr