

EASYCLAMP

5-AXIS VICES

 KRAFTTEK



EASYCLAMP

5-Axis Vice



KRAFTEK



KRAFTEK, expert in machining clamping and SMED techniques (quick change over) for more than a quarter of century, has always been focused on innovation.

With innovation and adaptability being at the heart of our mission and our kNow how, our team of professionals has developed turnkey solutions to increase the autonomy of your machining centres and raise production output:

- > **EASYBOX:** a full range of robots for the transfer of pallets automatically to the machining centres 3, 4 and 5 axis, for companies that want to optimize the available machining time.
- > **EASYPROD:** an automation solution, a 6-axis robot for loading and unloading workpieces of CNC lathes.
- > **EASYCONNECT:** Connected tables to clamp your workpieces directly through zero-point systems for a quick-change of production series. It is possible to work on different clamping zones making a great variety of fixtures combinations.
- > **EASYLOCK:** zero-point systems for a quick changeover of workpieces and fixtures by at least 5 μm .
- > **EASYCLAMP:** Self-centring vices for your 5-axis machining operations.

Our experts at the R&D department study and design custom solutions for your specific operations.



EASYCLAMP

Range presentation

The EASYCLAMP vices help significantly increase your production. Our mechanical vices with concentric clamping have a jaw width ranging from 50 mm to 160 mm to clamp your workpieces. ENGINEERING DATA offers customised clamping solutions for your workpieces. EASYCLAMP vices can be used with our zero point systems EASYLOCK range to minimise set-up time.













POWER AND CONTROL:

- > Reversible jaws
- > Better accessibility for 5-axis machining process
- > Clamping force up to 40 kN
- > Great reliability
- > We can customise our solutions to meet your needs
- > Flexibility
- > Responsiveness
- > ISO 9001 Certified: 2015




Contents **KRAFTTEK**

Self-centering mechanical vices

	CM50 R80 (-T)		PAGE 4
	CM80 R130 (-T)	JAW WIDTH 50 MM	PAGE 8
	CM80 R130 M14		PAGE 10
	CM100 RC (-T)		PAGE 14
	CM100 R200 (-T)	JAW WIDTH 80 MM	PAGE 16
	CM100 R250 (-T)		PAGE 18
	CM125 R160 C(-T)		PAGE 22
	CM125 R160 I	JAW WIDTH 100 MM	PAGE 26
	CM125 R300 I (-T)		PAGE 28
	CM160 R400 I	JAW WIDTH 125 MM	PAGE 32
	CM160 RCT		PAGE 36
	APPLICATIONS		PAGE 39

Self-centering pneumatic vices

	DP 50	PAGE 44
	DP 64	PAGE 46
	DP 100 (- C)	PAGE 50
	DP 160 (- C)	PAGE 54
	DP 200 (- C)	PAGE 58
	DP 250 (- C)	PAGE 62

SELF-CENTERING MECHANICAL VICE
> EASYCLAMP CM50 R80 (-T)



Technical Features

Self-centering vice with 48 mm jaw width and a repeatability of +/- 0.01 mm.

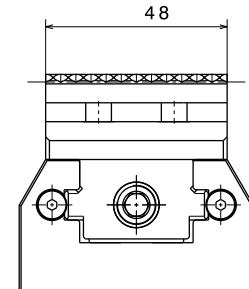
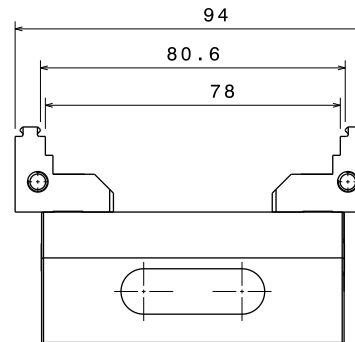
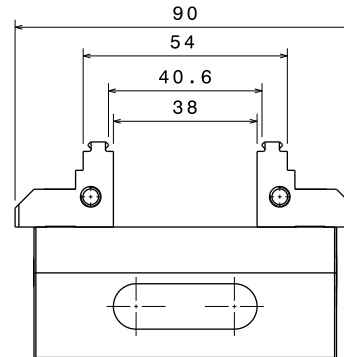
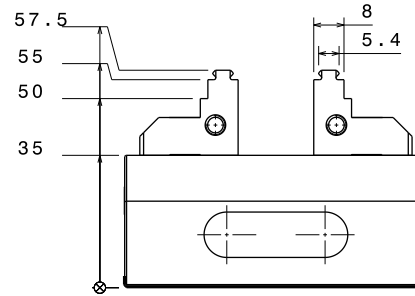
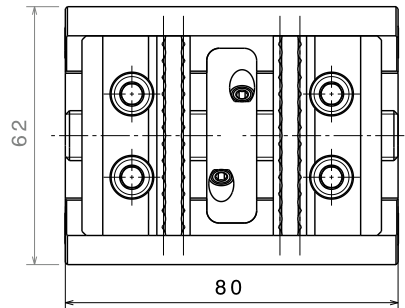
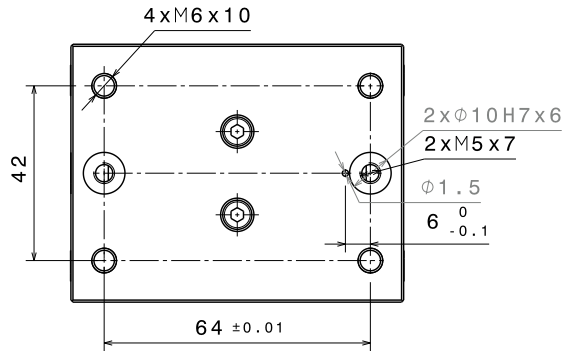
- > Constant clamping stroke up to 38 mm.
- > The vice can be mounted directly on an adaptor plate or via clamping pins(-T) on our EASYLOCK zero point systems.
- > The jaws are cemented, interchangeable with offset reversible claws for maximum opening, smooth and therefore mixed
- > The maximum clamping force is 10 kN.
Maximum torque 40 N.m

Weight: 1.34 kg

For jaws, see pages 6 and 7

SELF-CENTERING MECHANICAL VICE > EASYCLAMP CM50 R80 (-T)

KRAFTEK

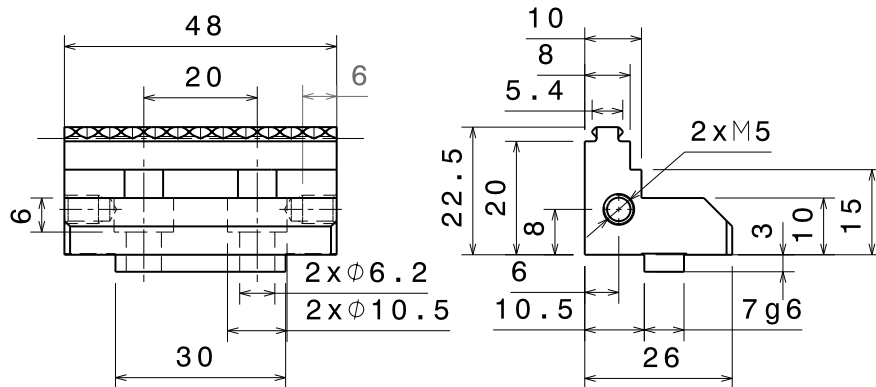


Technical Data	Units	CM50 R80 (-T)
Clamping Force	kN	10
Total weight (with jaws)	kg	1.34
Clamping Stroke	mm	38
Repeatability	mm	+/- 0.01

JAW WIDTH 50 MM FOR CM50 R80 (-T)

> MGM CM50 (standard jaws)

Reversing jaws: smooth and claw
jaws for CM50 vice

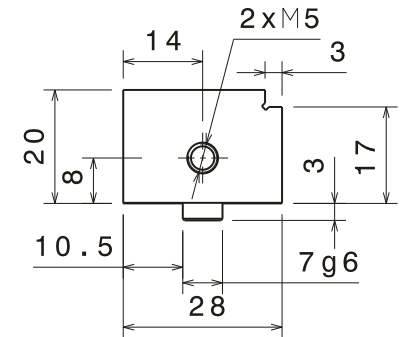
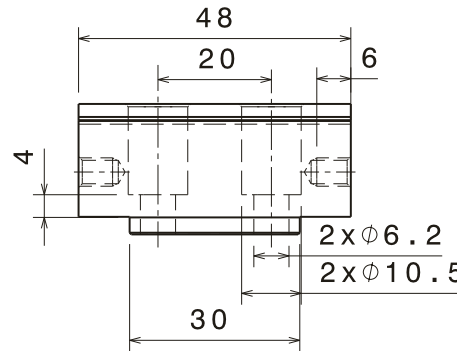
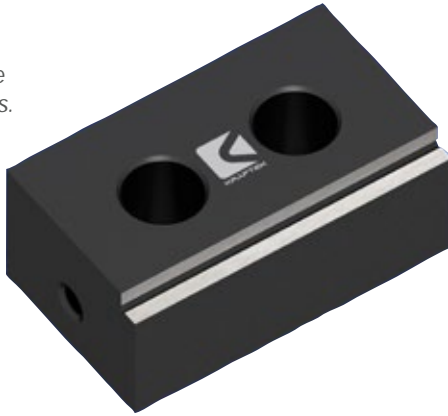


The vice is delivered with a set of standard jaws

JAW WIDTH 50 MM FOR CM50 R80 (-T)

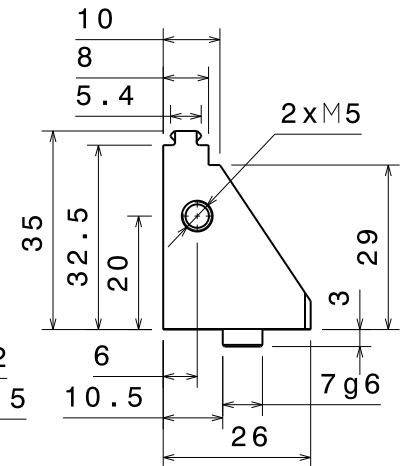
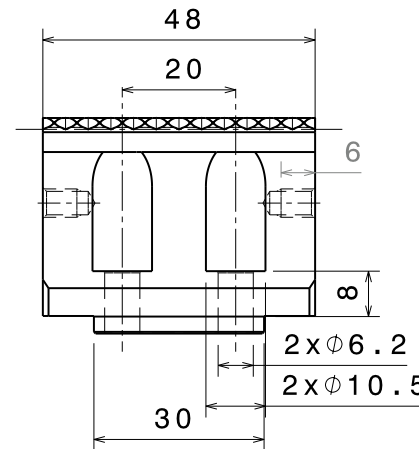
> ML CM50

Machinable jaws to be adapted to your needs.



> MGM-CM50-H35

Reversing jaws: smooth and claw jaws for CM50 vice
Height 35 mm.



SELF-CENTERING MECHANICAL VICE > EASYCLAMP CM80 R130 (-T)



Technical Features

Self-centering vice with 78 mm jaw width and high repeatability clamping of ± 0.01 mm.

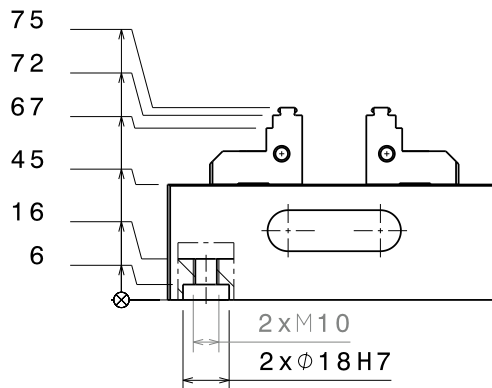
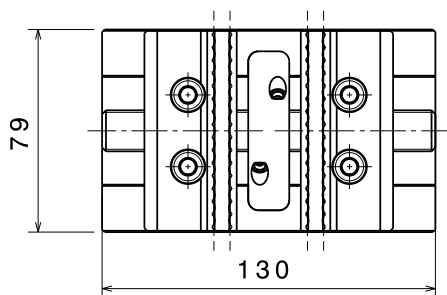
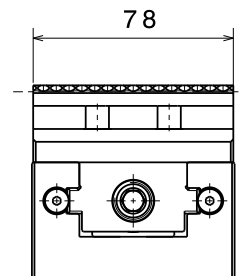
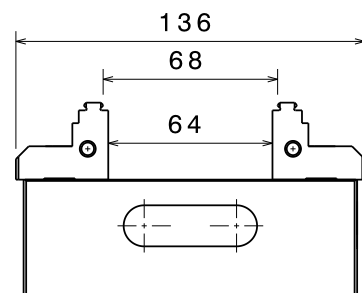
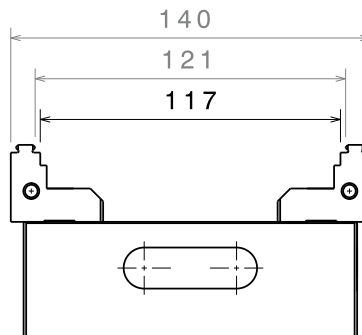
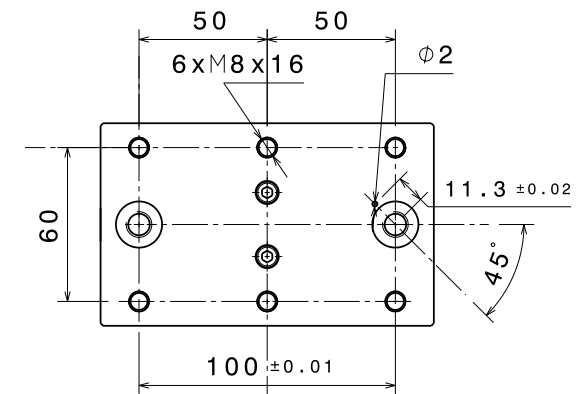
- > Constant clamping stroke up to 64 mm.
- > The vice can be mounted directly on an adaptor plate or via clamping pins(-T) on our EASYLOCK zero point systems.
- > The jaws are cemented, interchangeable with offset reversible claws for maximum opening, smooth and therefore mixed.
- > The maximum clamping force is 23 kN
Maximum torque 100 N.m

Weight: 3.7 kg

For jaws, see pages 12 and 13

SELF-CENTERING MECHANICAL VICE

> EASYCLAMP CM80 R130 (-T)



Technical Data	Units	CM80 R130 (-T)
Clamping Force	kN	23
Total weight (with jaws)	kg	3.7
Clamping Stroke	mm	64
Repeatability	mm	+/- 0.01

SELF-CENTERING MECHANICAL VICE

> EASYCLAMP CM80 R130 M14 (-T)



Technical Features

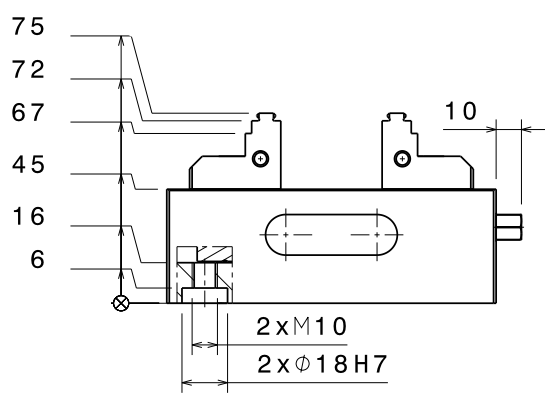
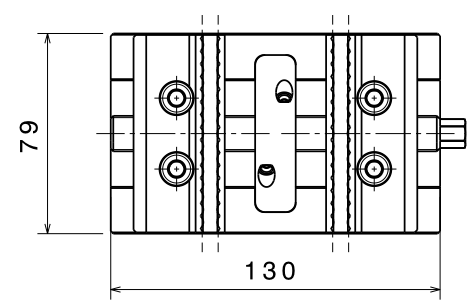
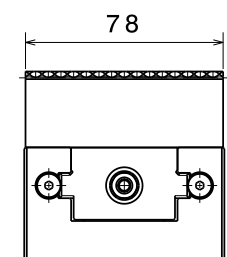
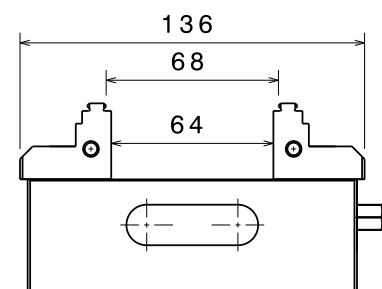
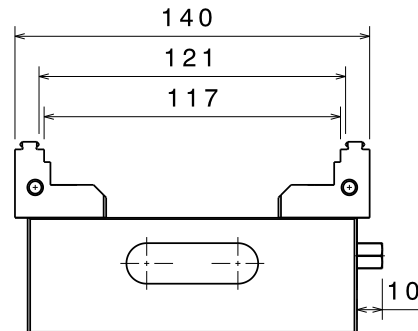
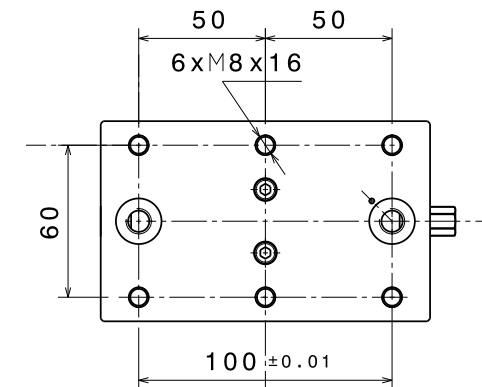
Self-centering vice with 78 mm jaw width and a repeatability of +/- 0.01 mm.

- > Constant clamping stroke up to 64 mm.
- > The vice can be mounted directly on an adaptor plate or via clamping pins(-T) on our EASYLOCK zero point systems.
- > The jaws are cemented, interchangeable with offset reversible claws for maximum opening, smooth and therefore mixed.
- > The maximum clamping force is 32 kN
Maximum torque 120 N.m

Weight: 3.7 kg

For jaws, see pages 12 and 13

SELF-CENTERING MECHANICAL VICE
> EASYCLAMP CM80 R130 M14 (-T)

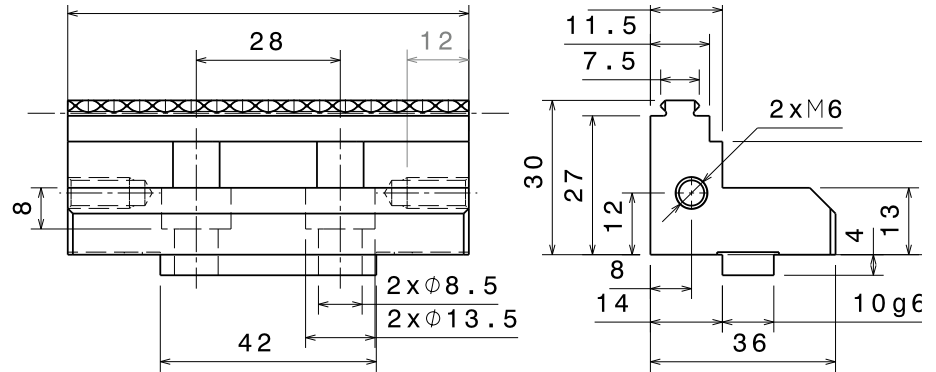


Technical Data	Units	CM80 R130 M14
Clamping Force	kN	32
Total weight (with jaws)	kg	3.7
Clamping Stroke	mm	64
Repeatability	mm	+/- 0.01

JAW WIDTH 80 MM CM80 R130 (-T) AND CM80 R130 M14 (-T)

> MGM CM80 (standard jaws)

Reversing jaws: smooth and
claw jaws for CM80 vice.

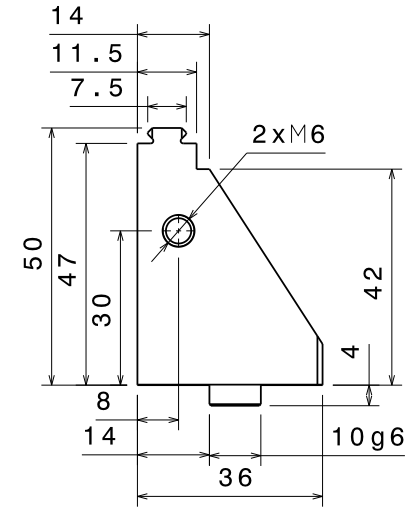
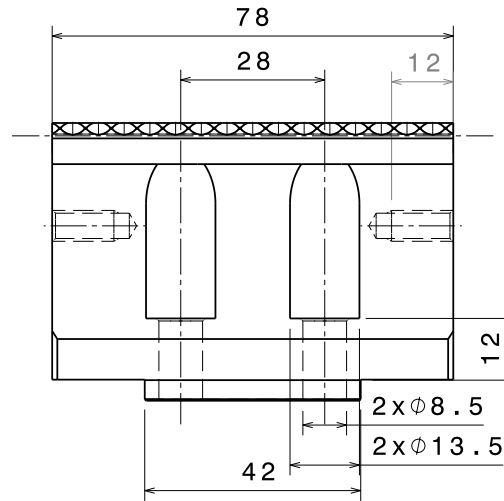


The vice is delivered with a set of standard jaws

JAW WIDTH 80 MM FOR CM80 R130 (-T) AND CM80 R130 M14 (-T)

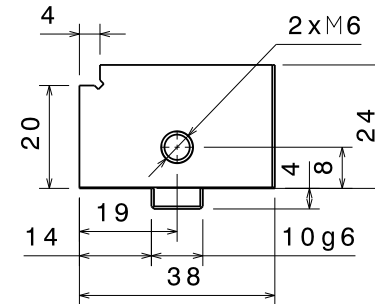
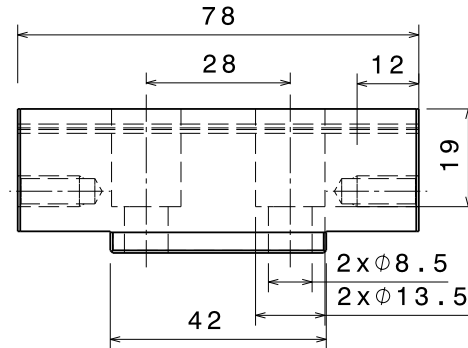
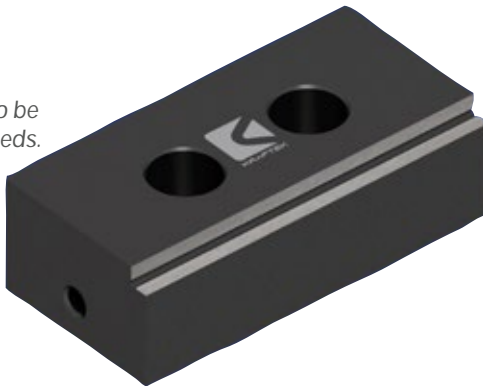
> MGM CM80 H50

Reversing jaws: smooth and claw jaws for CM80 50 mm height.



> ML-CM80

Smooth jaws. Machinable jaws to be adapted to your needs.



SELF-CENTERING MECHANICAL VICE > EASYCLAMP CM100 RC (-T)



Technical Features

Vice for an automation solution.

Self-centering vice with 100 mm jaw width and a repeatability of +/- 0.01 mm.

- > Constant clamping stroke up to 100 mm.
- > The vice can be mounted directly on an adaptor plate or via clamping pins(-T) on our EASYLOCK zero point systems.
- > The jaws are cemented, interchangeable with offset, reversible claws for maximum opening, smooth and therefore mixed.
- > The maximum clamping force is 32 kN.
Maximum torque 120 N.m.

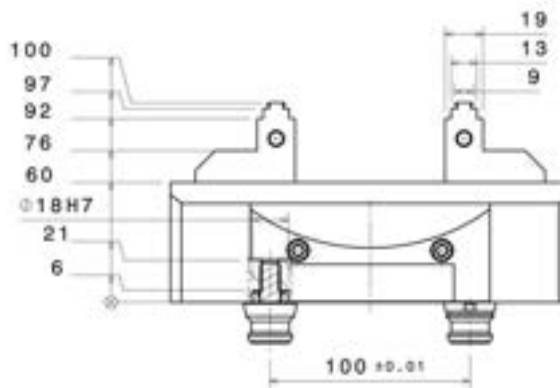
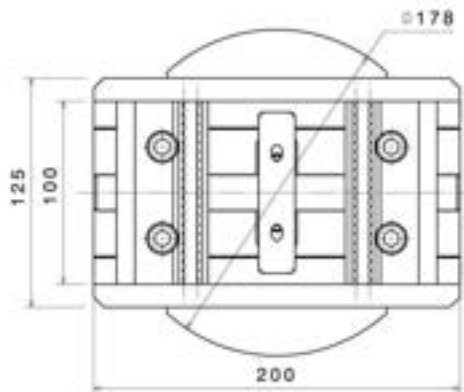
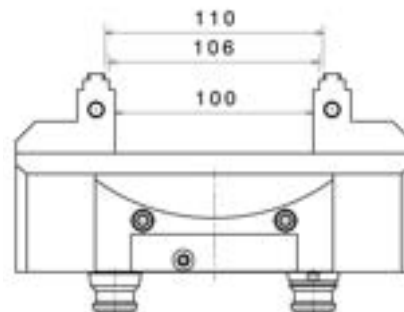
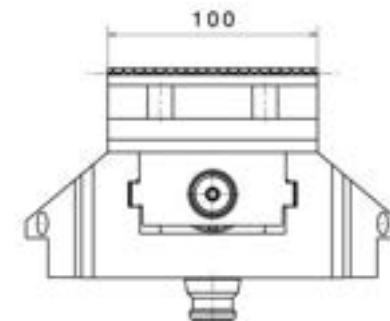
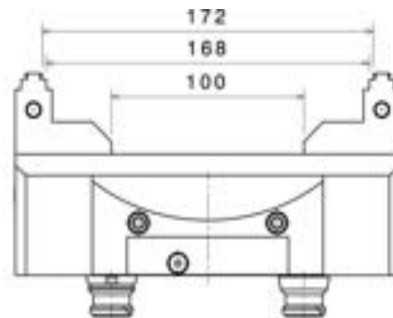
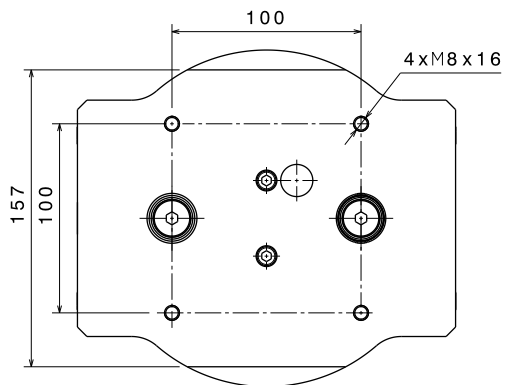
Weight: 12.2 kg

For jaws, see pages 20 and 21

SELF-CENTERING MECHANICAL VICE

> EASYCLAMP CM100 RC (-T)

KRAFTEK



Technical Data	Units	CM100 RC (-T)
Clamping Force	kN	32
Total weight (with jaws)	kg	12.2
Clamping Stroke	mm	100
Repeatability	mm	+/- 0.01

SELF-CENTERING MECHANICAL VICE > EASYCLAMP CM100 R200 (-T)



Technical Features

Self-centering vice of 100 mm jaw width and a repeatability clamping of +/- 0.01 mm.

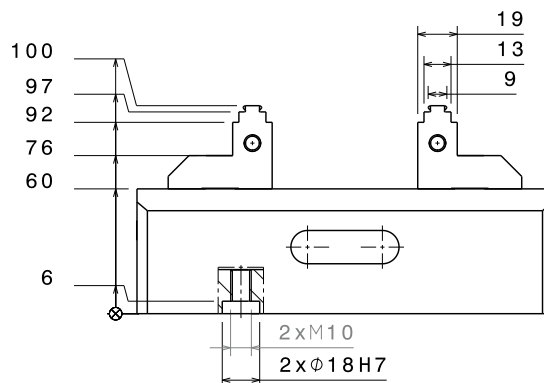
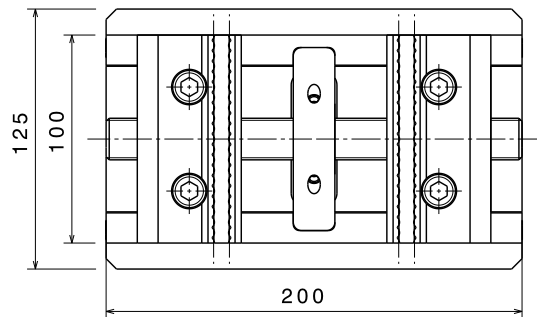
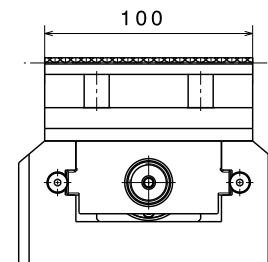
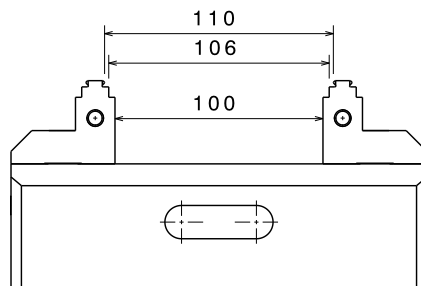
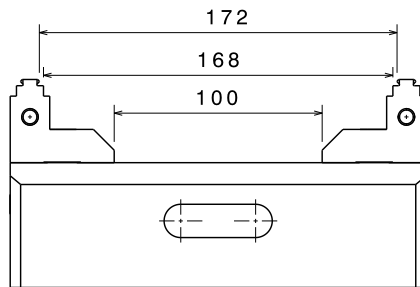
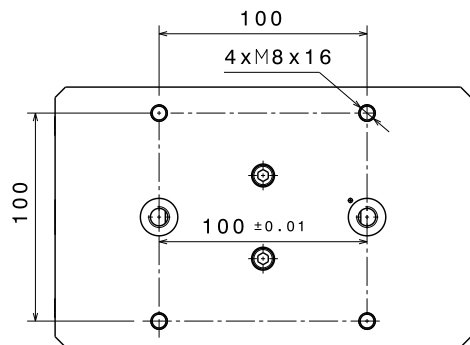
- > Constant clamping stroke up to 100 mm.
- > The vice can be mounted directly on an adaptor plate or via clamping pins(-T) on our EASYLOCK zero point systems.
- > The jaws are cemented, interchangeable with offset reversible claws for maximum opening, smooth and therefore mixed.
- > The maximum clamping force is 32 kN.
Maximum torque 120 N.m.

Weight: 10.9 kg

For jaws, see pages 20 and 21

SELF-CENTERING MECHANICAL VICE

> EASYCLAMP CM100 R200 (-T)



Technical Data	Units	CM100 R200 (-T)
Clamping Force	kN	32
Total weight (with jaws)	kg	10.9
Clamping Stroke	mm	100
Repeatability	mm	+/- 0.01

SELF-CENTERING MECHANICAL VICE

> EASYCLAMP CM100 R250 (-T)



Technical Features

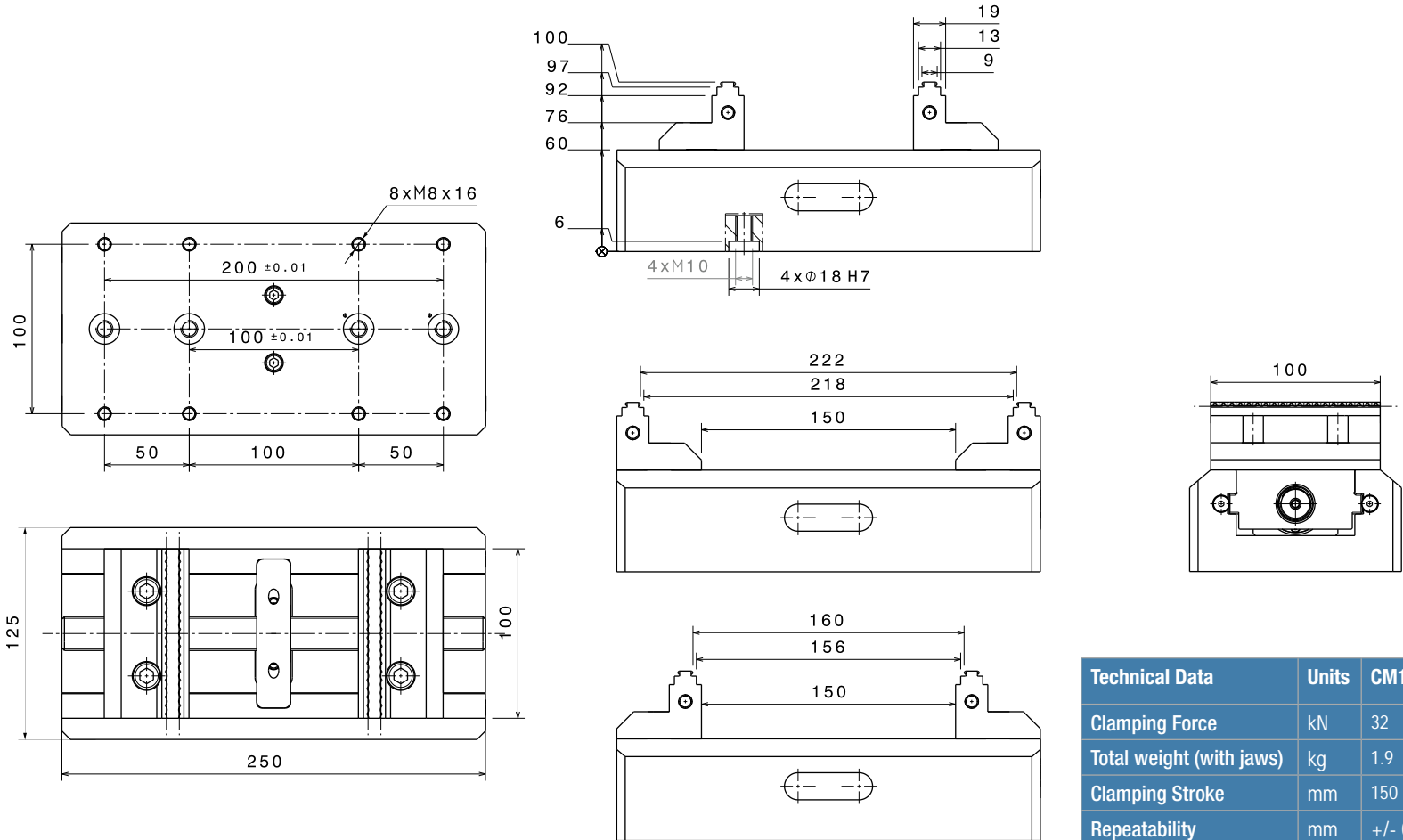
Self-centering vice of 100 mm jaw width and a repeatability of +/- 0.01 mm.

- > Constant clamping stroke up to 150 mm.
- > The vice can be mounted directly on an adaptor plate or via clamping pins(-T) on our EASYLOCK zero point systems.
- > The jaws are cemented, interchangeable with offset reversible claws for maximum opening, smooth and therefore mixed.
- > The maximum clamping force is 32kN.
Maximum torque 120 N.m.

Weight: 12.9 kg

SELF-CENTERING MECHANICAL VICE

> EASYCLAMP CM100 R250 (-T)



Technical Data	Units	CM100 R250 (-T)
Clamping Force	kN	32
Total weight (with jaws)	kg	1.9
Clamping Stroke	mm	150
Repeatability	mm	+/- 0.01

JAW WIDTH 100 MM

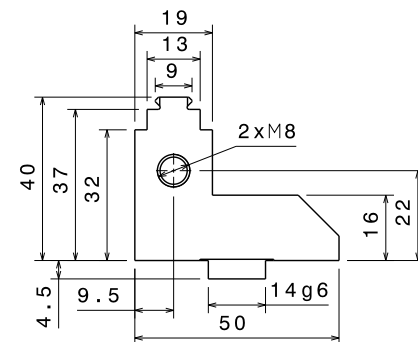
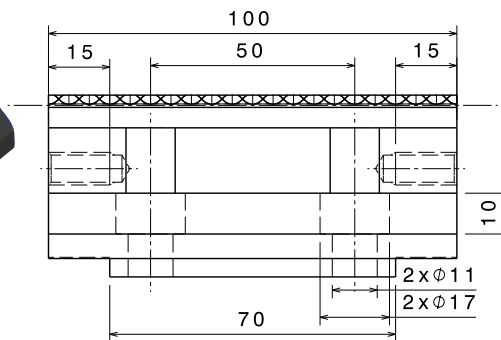
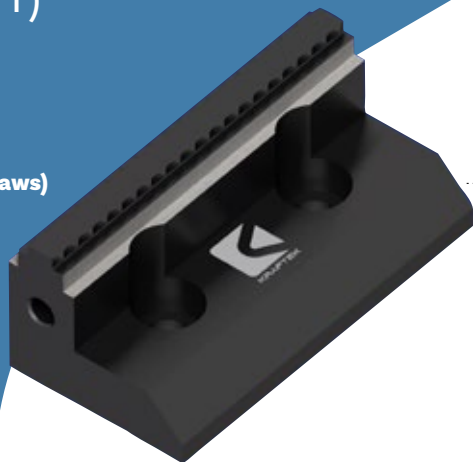
FOR CM100 RC (-T)

CM100 R200 (-T)

CM100 R250 (-T)

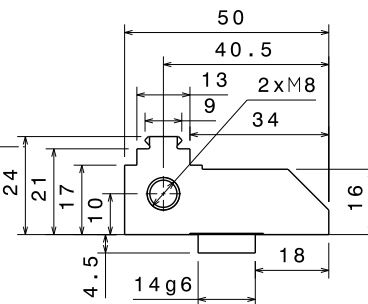
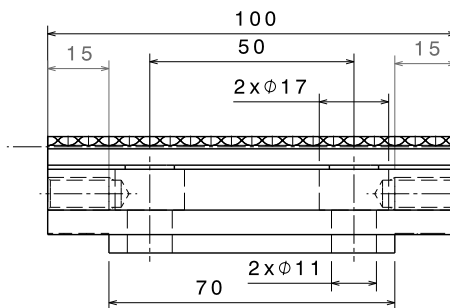
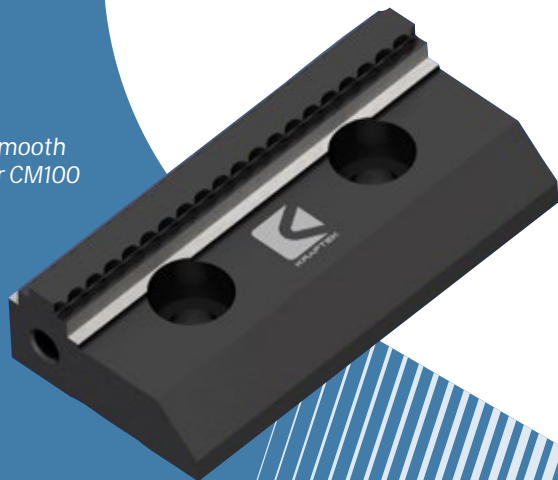
> CM100 H40 (standard jaws)

Double jaws: smooth and with claws for CM100 vice.
Height 40 mm.



> MGM CM100

Reversing jaws: smooth and claw jaws for CM100 vice.



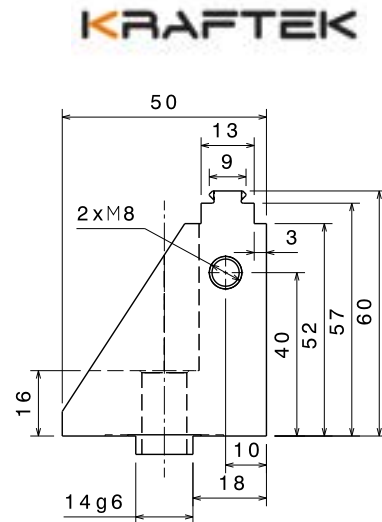
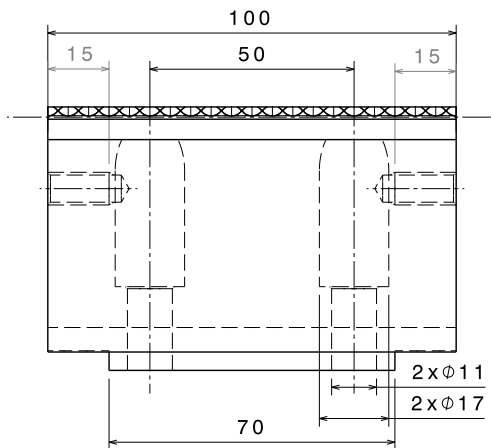
The vice is delivered with a set of standard jaws.

JAW WIDTH 100 MM

FOR CM100 RC (-T)
CM100 R200 (-T)
CM100 R250 (-T)

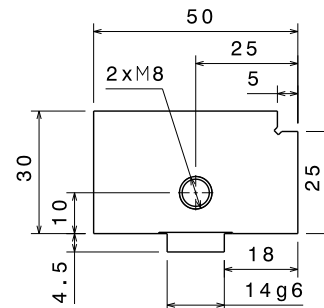
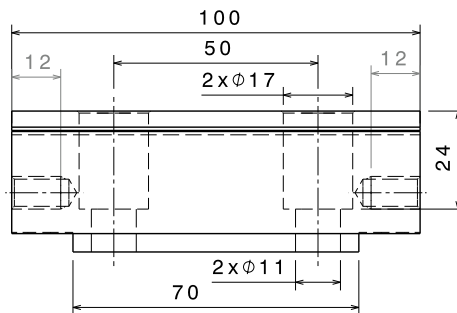
> MGM CM100 H60

Reversing jaws: smooth and jaws for CM80 vice.
60 mm height.



> ML CM100

Smooth jaws.
Machinable jaws to be adapted to your needs.



SELF-CENTERING MECHANICAL VICE

> EASYCLAMP CM125 R160 C (-T)



Technical Features

Self-centering vise of 125 mm jaw width and a repeatability of +/- 0.01 mm.

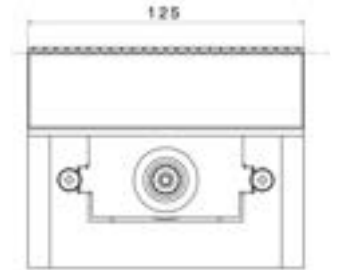
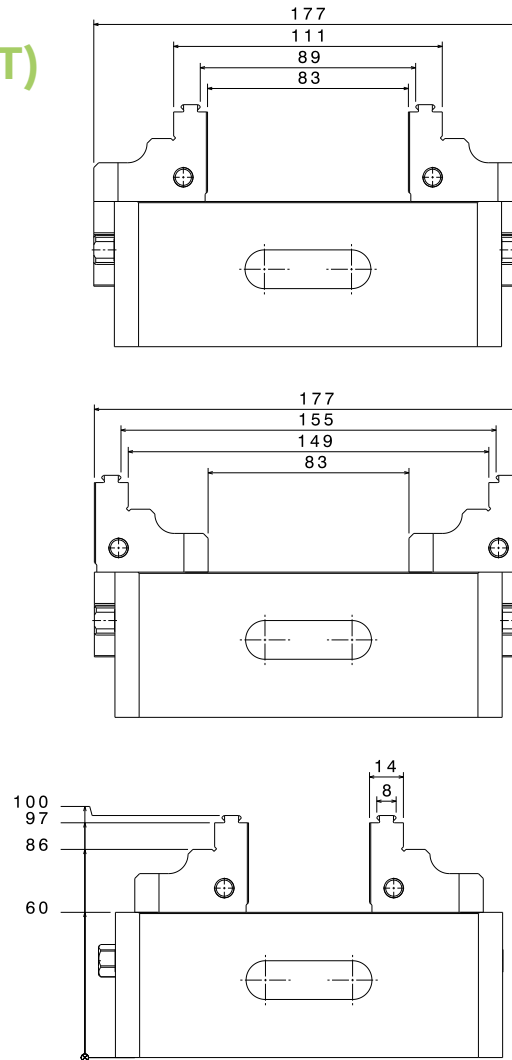
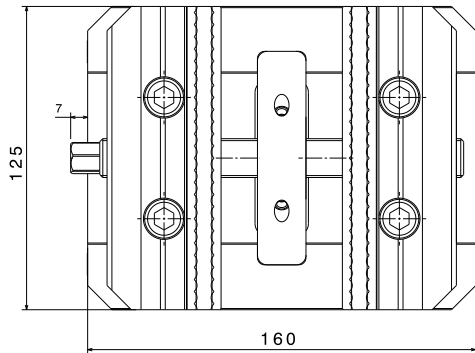
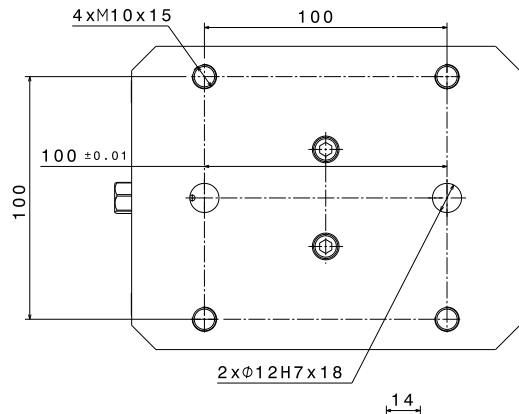
- > Constant clamping stroke up to 83 mm.
- > The vice can be mounted directly on an adaptor plate or via clamping pins(-T) on our EASYLOCK zero point systems.
- > The jaws are cemented, interchangeable with offset reversible claws for maximum opening, smooth and therefore mixed.
- > The maximum clamping force is 32 kN.
Maximum torque 120 N.m.

Weight: 9.8 kg

SELF-CENTERING MECHANICAL VICE

> EASYCLAMP CM125 R160 C (-T)

KRAFTEK



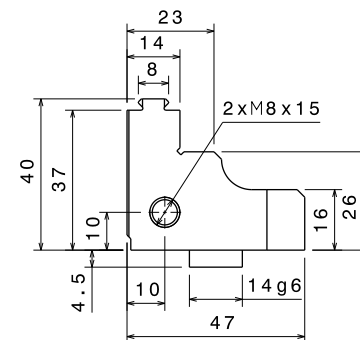
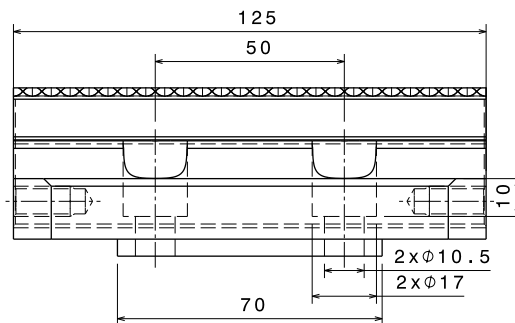
Technical Data	Units	CM125 R160 C (-T)
Clamping Force	kN	32
Total weight (with jaws)	kg	9.8
Clamping Stroke	mm	83
Repeatability	mm	+/- 0.01

JAW WIDTH 125 MM FOR CM125 R160 C (-T)

> CM125 R160 C H40 (standard jaws)

Reversing jaws: smooth and claw jaws for CM125 R160 vice.

Height 40 mm.

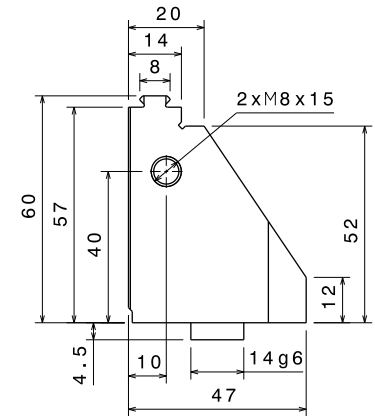
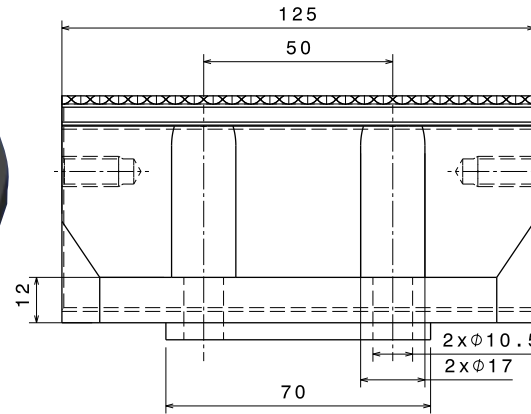


The vice is delivered with a set of standard jaws.

JAW WIDTH 125 MM FOR CM125 R160 C (-T)

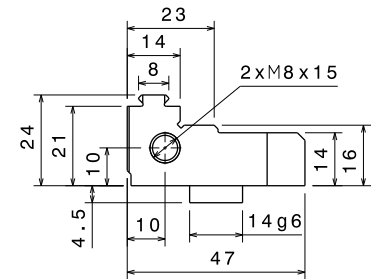
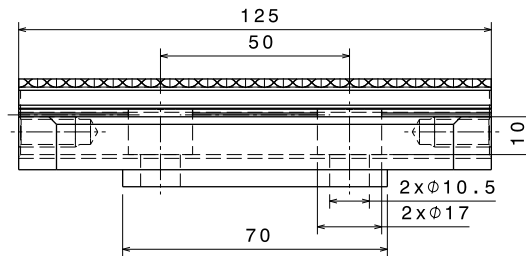
> CM125 R160 C H60

Reversing jaws: smooth and claw jaws for CM125 R160 vice
Height 60 mm.



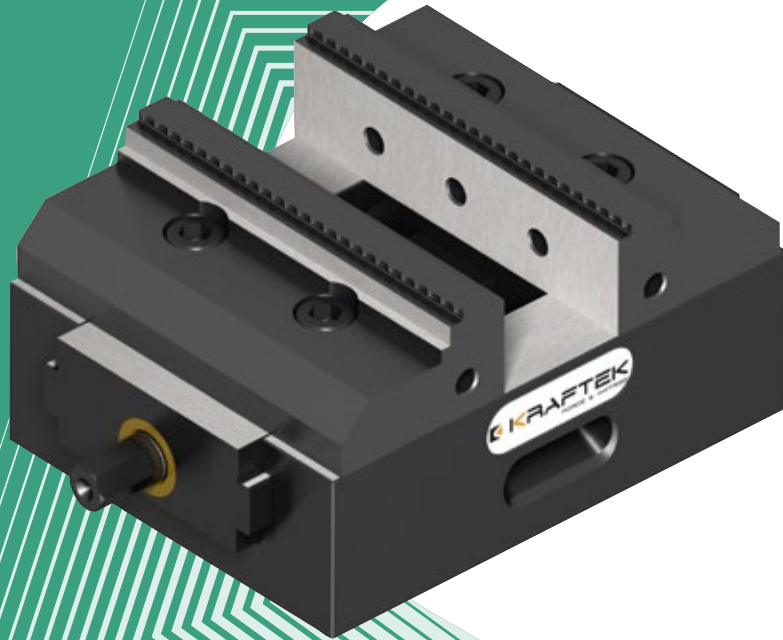
> CM125 R160 C H24

Reversing jaws: smooth and claw jaws for CM125 R160 vice
Height 24 mm.



SELF-CENTERING MECHANICAL VICE

> EASYCLAMP CM125 R160 I (-T)



Technical Features

Self-centering vice with 125 mm jaw width and a repeatability of +/- 0.01 mm.

> System jaws are fitted into the carriage slots with a maximum constant clamping stroke up to 40 mm.

> The vice can be mounted directly on an adaptor plate or via clamping pins(-T) on our EASYLOCK zero point systems.

> Cemented jaws are reversible for maximum opening.

> The maximum clamping force is 32 kN.
Maximum torque 120 N.m.

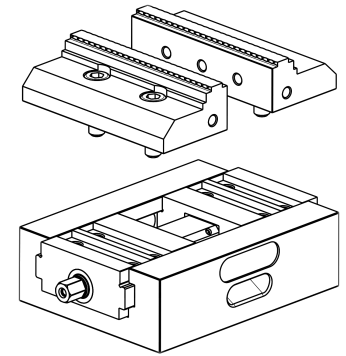
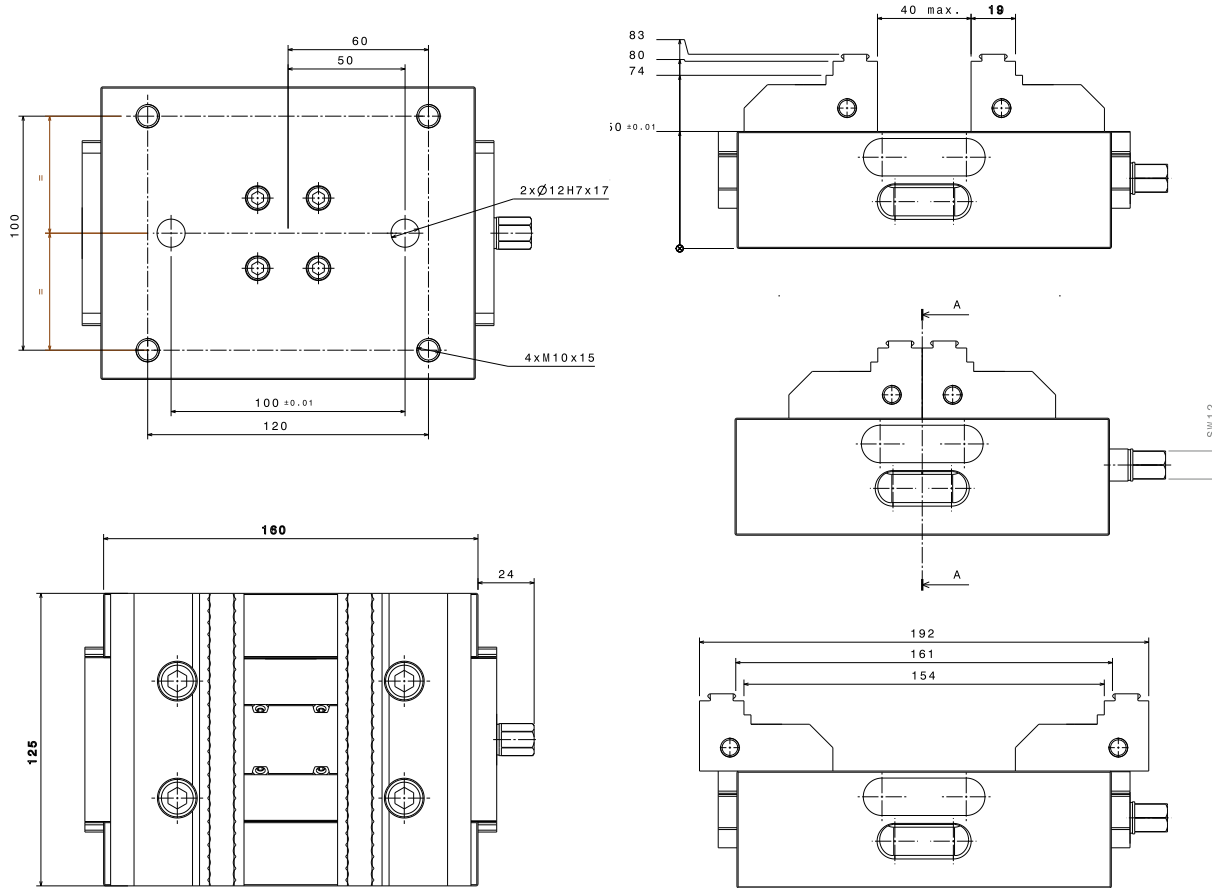
Weight: 9.4 kg

For jaws, see pages 30 and 31

SELF-CENTERING MECHANICAL VICE

> EASYCLAMP CM125 R160 I (-T)

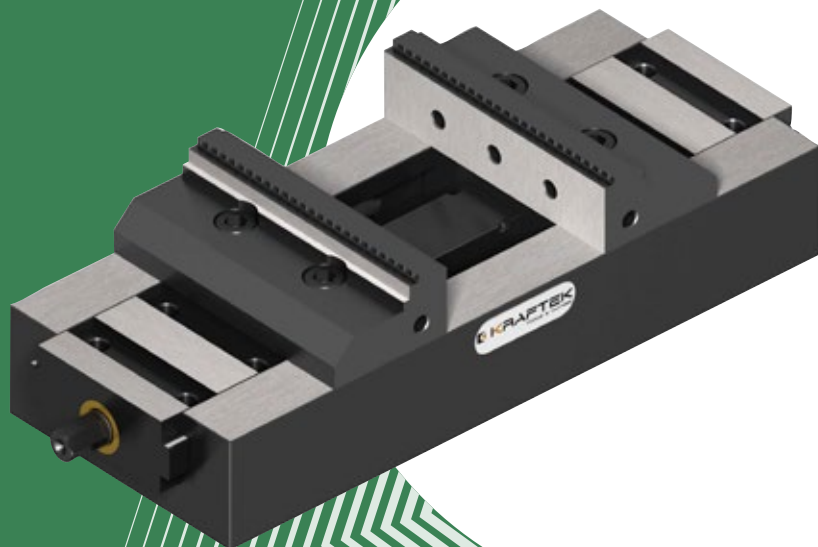
KRAFTEK



Technical Data	Units	CM125- R160 -I
Clamping Force	kN	32
Total weight (with jaws)	kg	9.4
Clamping Stroke	mm	40
Repeatability	mm	+/- 0.01
Gap between jaws	mm	19x2

SELF-CENTERING MECHANICAL VICE

> EASYCLAMP CM125 R300 I (-T)



Technical Features

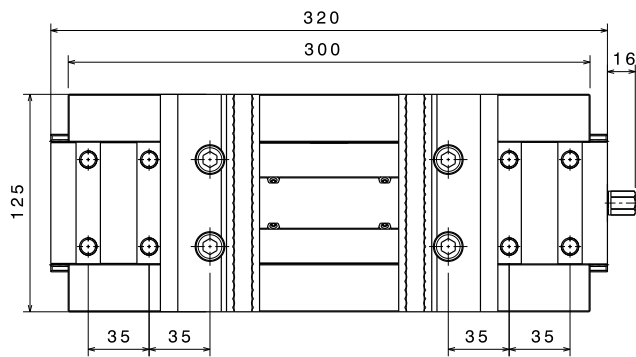
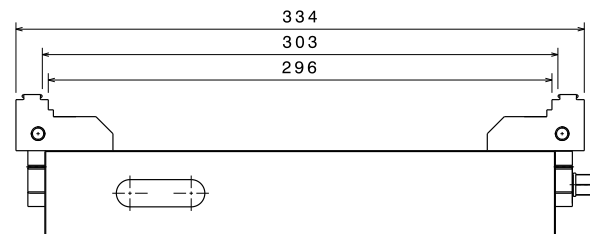
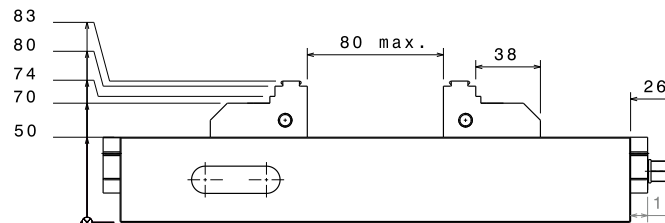
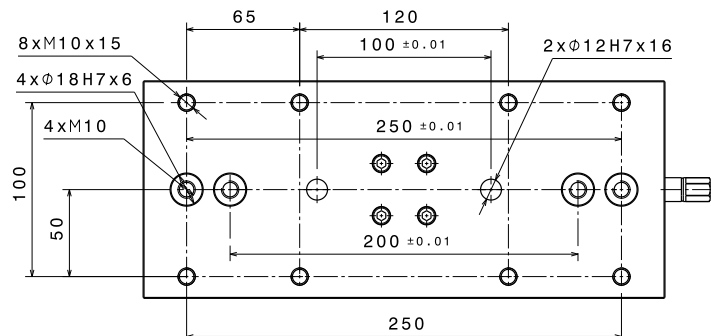
Self-centering vice with 125 mm jaw width and high repeatability of +/- 0.01 mm.

- > System jaws are fitted into the carriage slots with a maximum constant clamping stroke up to 80 mm.
- > The vice can be mounted directly on an adaptor plate or via clamping pins(-T) on our EASYLOCK zero point systems.
- > Cemented jaws are reversible for maximum opening.
- > The maximum clamping force is 32 kN.
Maximum torque 120 N.m.

For jaws, see pages 30 and 31

SELF-CENTERING MECHANICAL VICE

> EASYCLAMP CM125 R300 I (-T)



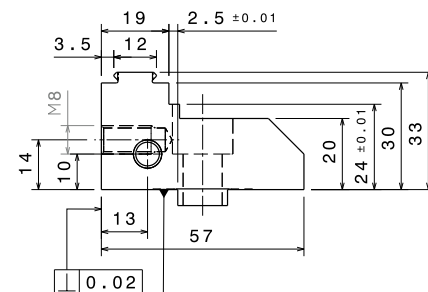
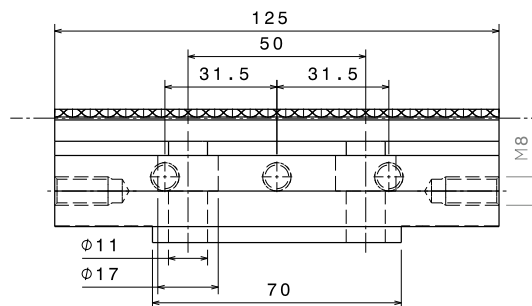
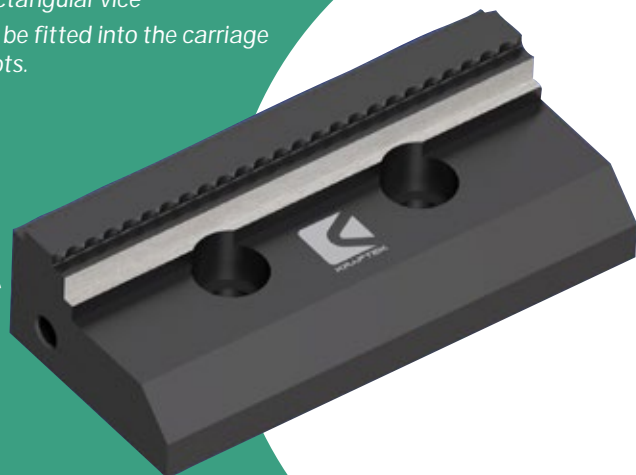
Technical Data	Units	CM125- R300 -I
Clamping Force	kN	32
Total weight (with jaws)	kg	15.3
Clamping Stroke	mm	80
Repeatability	mm	+/- 0.01
Gap between jaws	mm	15x4

JAW WIDTH 125 MM FOR CM125 R160 I (-T) AND CM125 R300 I (-T)

> MGM-CM125-R-I (Standard)

Smooth jaws for CM125
rectangular vice

To be fitted into the carriage
slots.



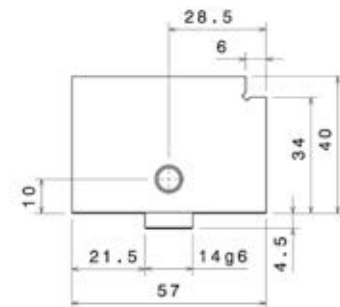
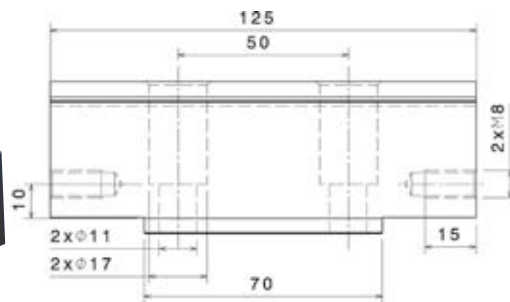
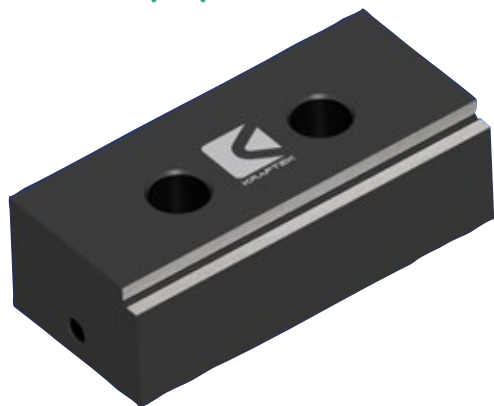
The vice is delivered with a set of standard jaws.

JAW WIDTH 125 MM FOR CM125 R160 I (-T) AND CM125 R300 I (-T)

> ML-CM125-R-I

Rectangular smooth jaws for CM125 vice to be fitted into the carriage slots.

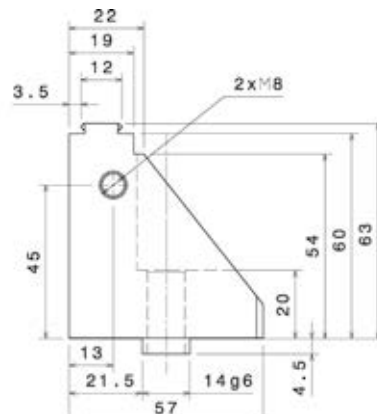
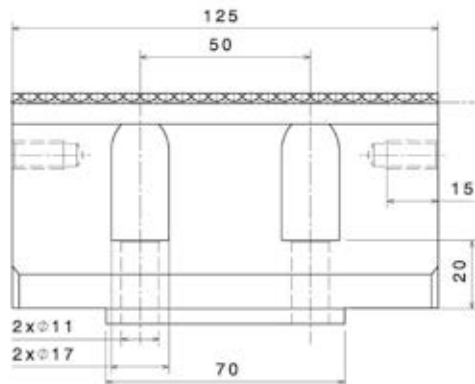
Machinable jaws to be adapted to your needs.



> MGM-CM125 R I H63

Rectangular reversing jaws: Smooth and with claw jaws for CM125 vice to be fitted into the carriage slots.

Height 63 mm



SELF-CENTERING MECHANICAL VICE

> EASYCLAMP CM160 R400-I (-T)



Technical Features

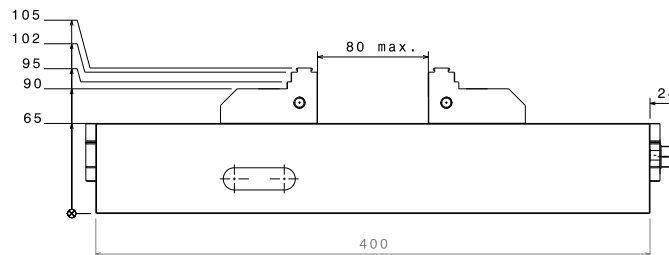
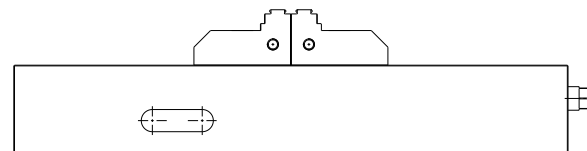
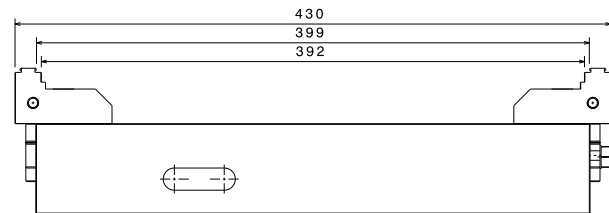
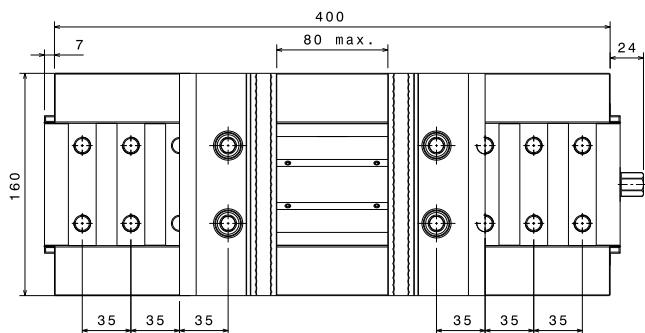
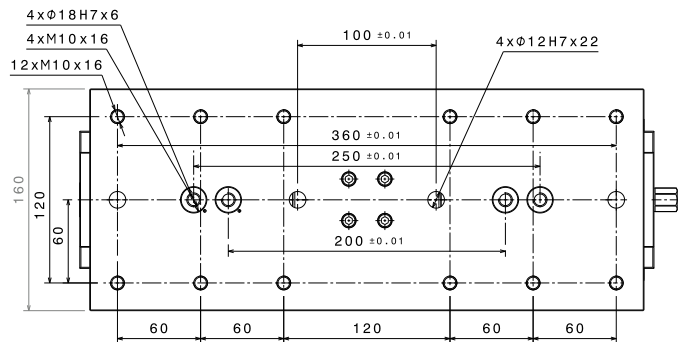
Self-centering vice with 160 mm jaw width and a repeatability of +/- 0.01 mm.

- > System jaws are fitted into the carriage slots with a maximum constant clamping stroke up to 80 mm.
- > The vice can be mounted directly on an adaptor plate or via clamping pins(-T) on our EASYLOCK zero point systems.
- > The jaws are cemented, interchangeable with offset, reversible claws for maximum opening, smooth and therefore mixed.
- > The maximum clamping force is 40 kN.
Maximum torque 180 N.m

Weight: 33.6 kg

SELF-CENTERING MECHANICAL VICE

> EASYCLAMP CM160 R400-I (-T)



Technical Data	Units	CM160- R400-I (-T)
Clamping Force	kN	40
Total weight (with jaws)	kg	33,6
Clamping Stroke	mm	80
Repeatability	mm	+/- 0.01
Gap between jaws	mm	6 x 35

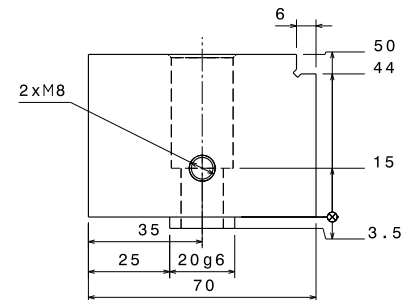
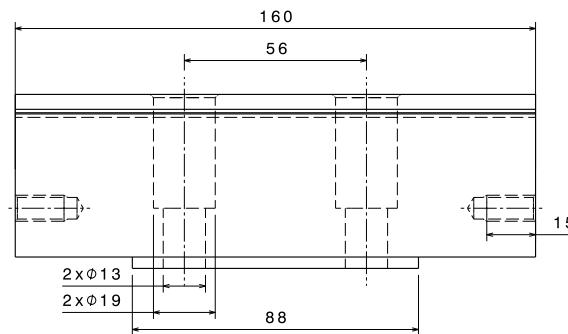
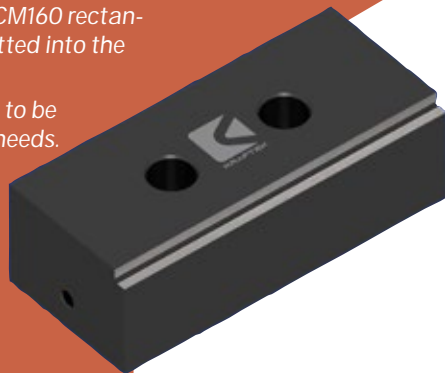
JAW WIDTH 125 MM FOR CM160 R400-I (-T)

The vice is delivered with a set of standard jaws.

> ML CM160 RI (standard jaws)

Smooth jaws for CM160 rectangular vice to be fitted into the carriage slots.

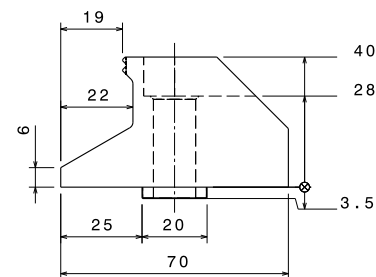
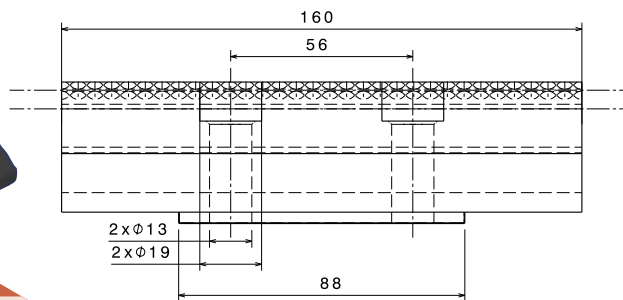
Machinable jaws to be adapted to your needs.



> MG CM160 RI H40

Rectangular reversing jaws: Smooth and with claw jaws for CM160 vice to be fitted into the carriage slots.

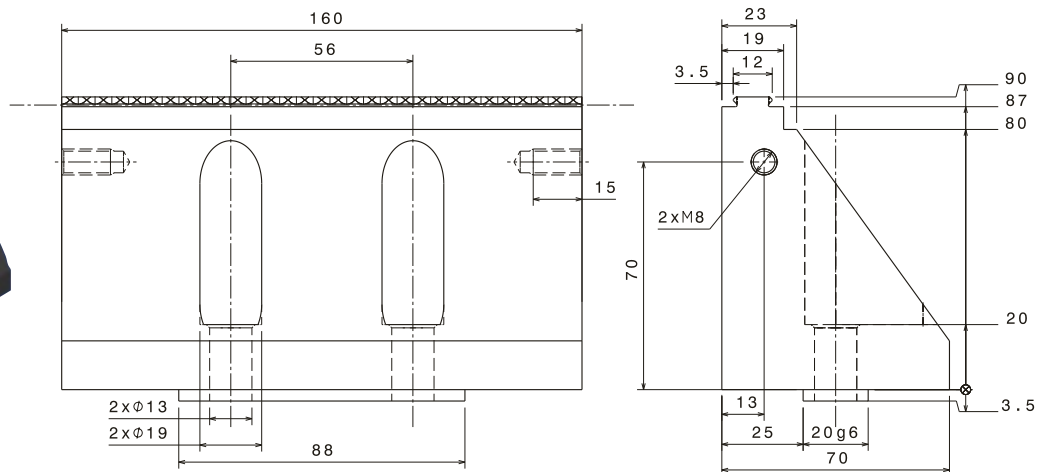
Height 40 mm.



JAW WIDTH 125 MM FOR CM160 R400-I (-T)

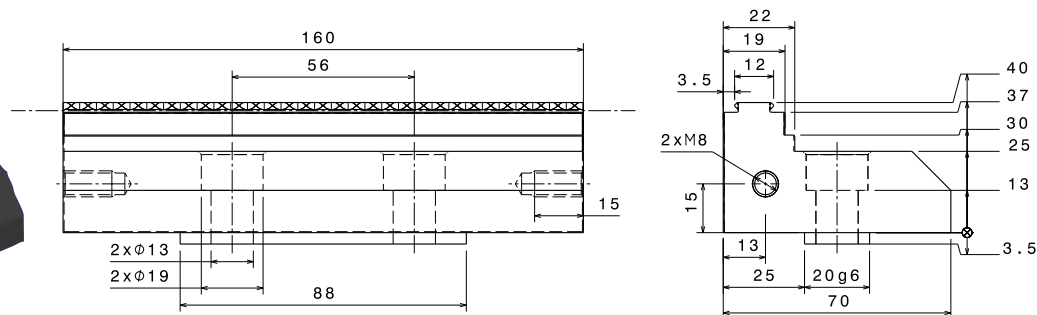
> MGM CM160 RI H90

Rectangular reversing jaws: Smooth and with claw jaws for CM160 vice to be fitted into the carriage slots.
Height 90 mm.



> MGM CM160 RI

Rectangular reversing jaws: Smooth and with claw jaws for CM160 vice to be fitted into the carriage slots.



SELF-CENTERING MECHANICAL VICE > EASYCLAMP CM160 RC I (-T)



Technical Features

Vice for an automation solution.

Self-centering vice with 160 mm jaw width and a repeatability of +/- 0.01 mm.

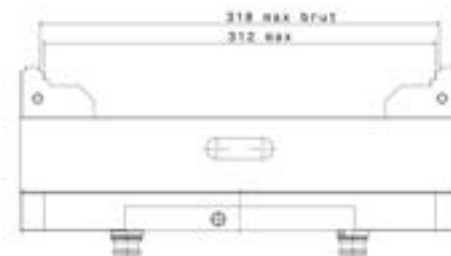
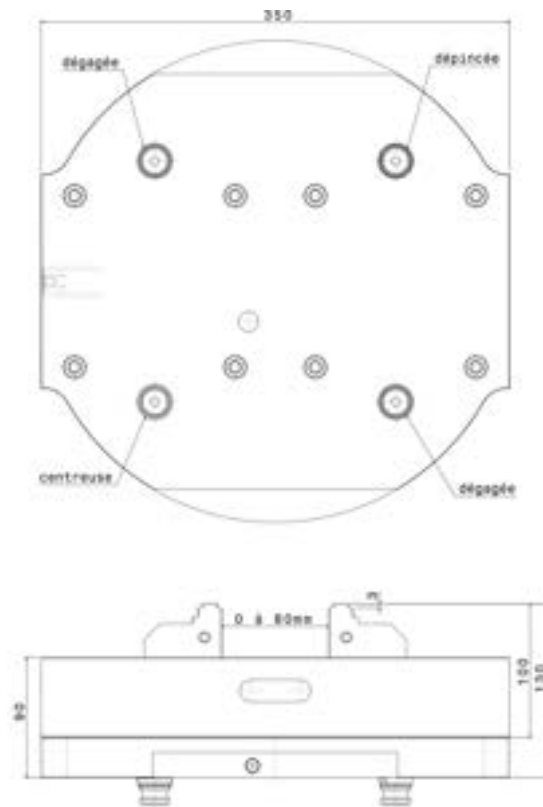
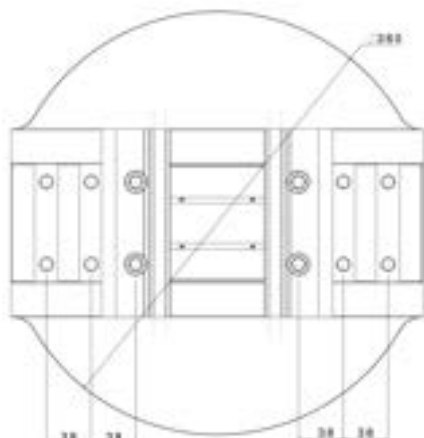
- > System jaws are fitted into the carriage slots with a maximum constant clamping stroke up to 80 mm.
- > The vice can be mounted directly on an adaptor plate or via clamping pins(-T) on our EASYLOCK zero point systems.
- > The jaws are cemented, interchangeable with offset, reversible claws for maximum opening, smooth and therefore mixed.
- > The maximum clamping force is 40 kN.
Maximum torque 150 N.m

Weight: 35,1 kg

These characteristics may be subject to changes.

SELF-CENTERING MECHANICAL VICE

> EASYCLAMP CM160 RC I (-T)



Technical Data	Units	CM 160-RC-I
Clamping Force	kN	40
Total weight (with jaws)	kg	35.1
Clamping Stroke	mm	80
Repeatability	mm	+/- 0.01
Gap between jaws	mm	38x4

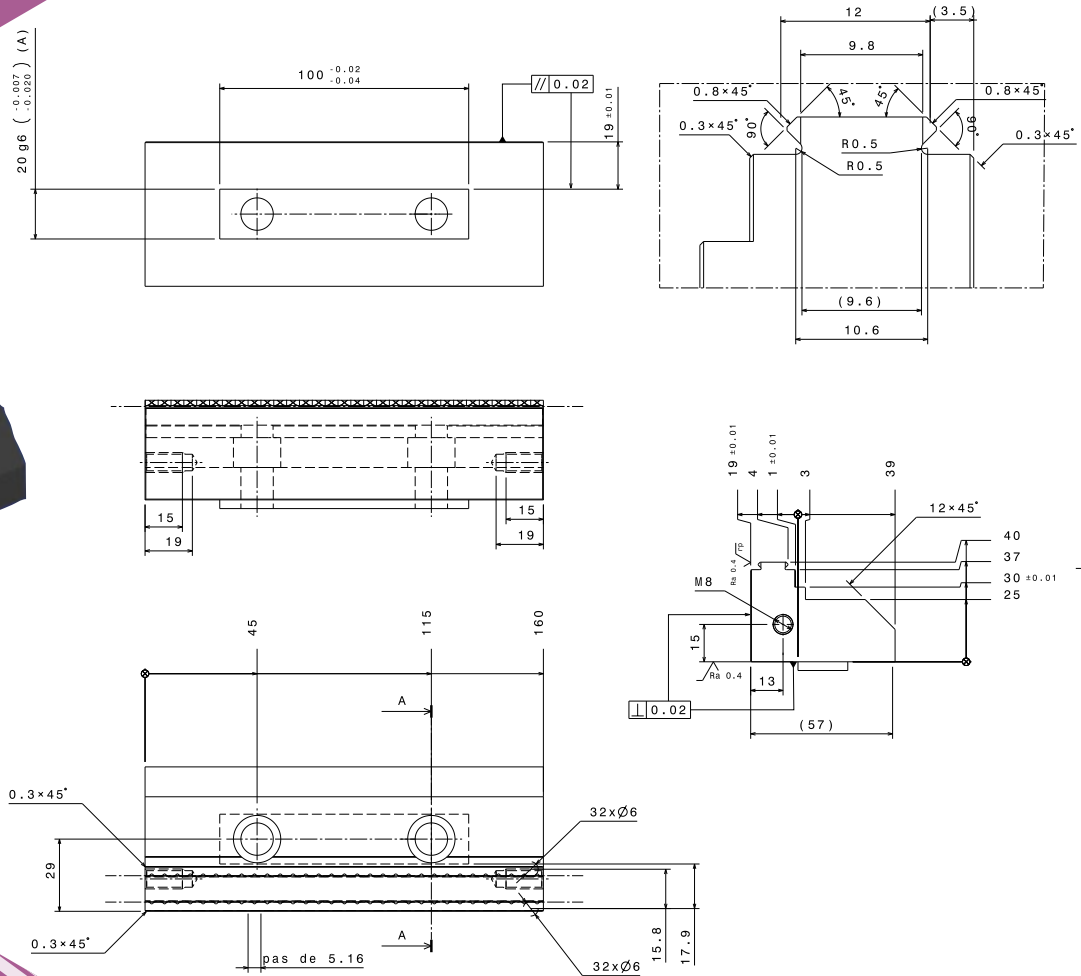
JAW WIDTH 160 MM FOR CM160 RC I (-T)

> MGM CM160 RI (Standard)

Rectangular reversing jaws:
Smooth and with claw jaws for
CM160 vice to be fitted
into the carriage slots.



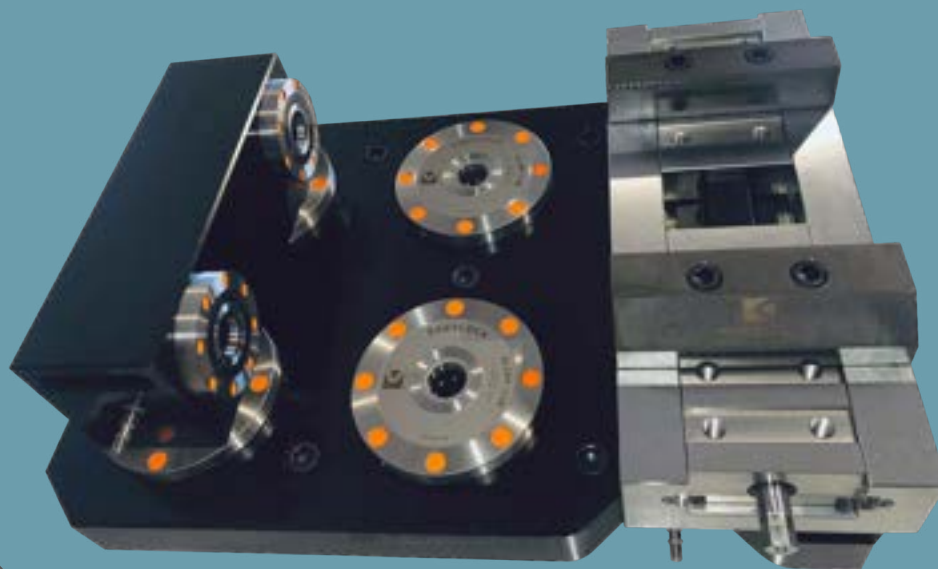
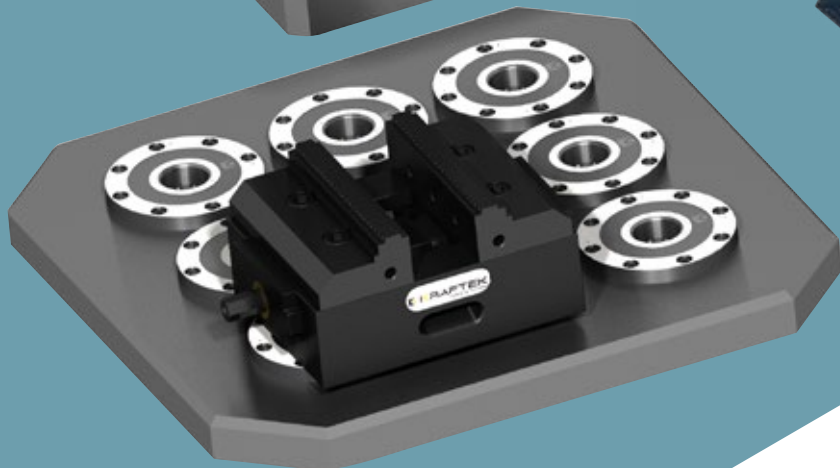
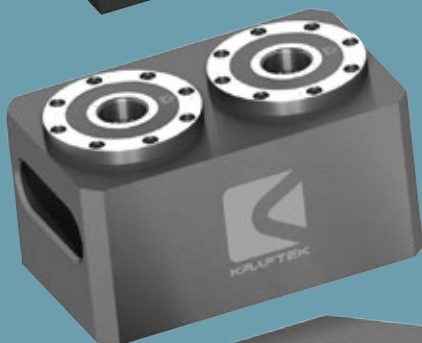
The vice is delivered with a set of standard jaws.



> APPLICATIONS



Several fixtures can be combined and mounted.



> APPLICATIONS



Mounting of an EASYCLAMP vice with clamping pins over an upper table equipped with our EASYLOCK zero point systems.



Upper table with EASYLOCK zero point systems using an adaptor plate.

EASYCLAMP CM 100 RCT vice
on an EASYBOX T30 robot to be
clamped on an upper table with 2
zero point systems.



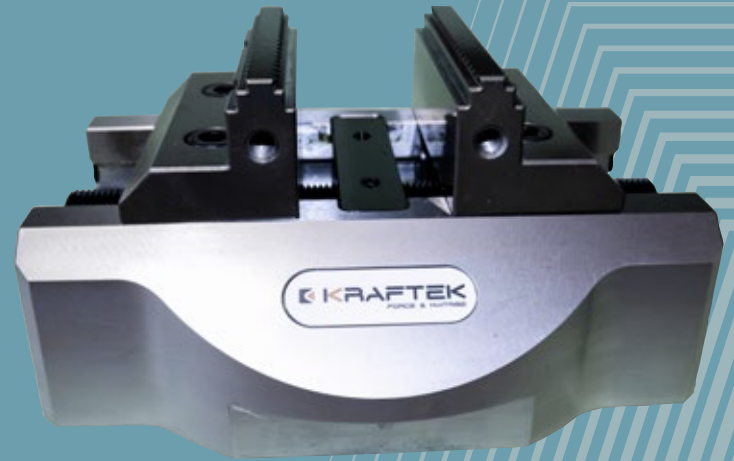
> APPLICATIONS



Clamping of a workpiece on an EASYCLAMP CM100 RCT vice over the loading station of an EASYBOX T30 robot.



EASYCLAMP vices inside the storage magazine of an EASYBOX T30 Robot.



EASYCLAMP vices are easy to be integrated into automation cells.

SELF-CENTERING PNEUMATIC VICE > EASYCLAMP DP50

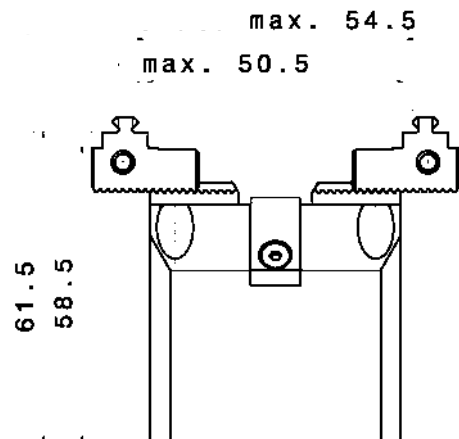


Technical Features

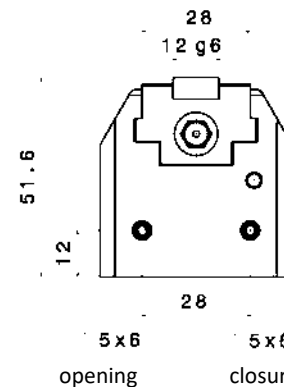
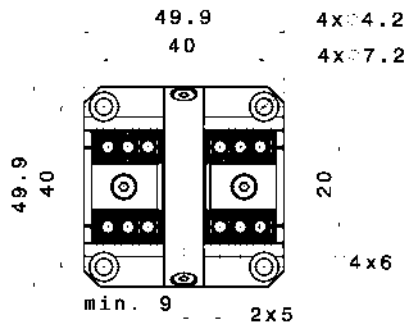
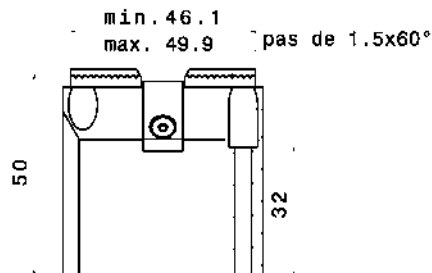
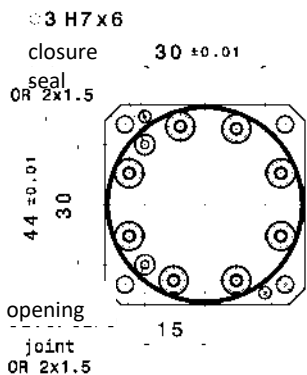
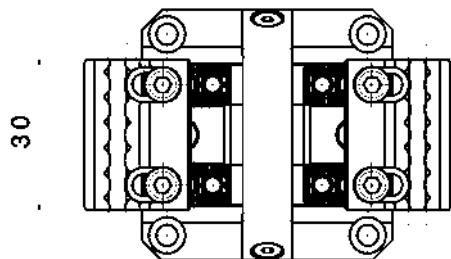
Double acting pneumatic precision clamp with a width of 50 mm and a repeatability of +/- 0.02 mm.

- > The vice versions are supplied with a set of standard cemented jaws.
- > The stroke is 1.9 mm per jaw for a total opening of 3.8 mm.
- > Fixing and centring can be done:
 - With 2 pins $\varnothing 3 \times 10$ and 4 screws CHc M4x40
- > Maximum pressure is 12 bar, minimum 3.5 bar with the internal the internal spring for full travel and workpiece retention without a compressed air supply.
- > The DP 50 can be operated below 3 bar without the internal spring.

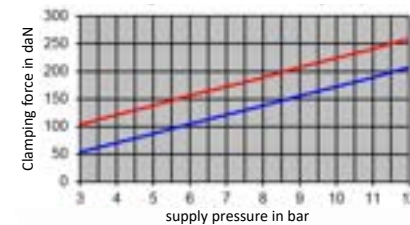
SELF-CENTERING PNEUMATIC VICE > EASYCLAMP DP50



2 screws CHc M4x10 c1. 12-9



Clamping force when closing the EASYCLAMP DP50 vice



supply pressure in bar
red: with internal spring fully compressed
blue: without internal spring or with internal spring fully extended

Technical Data	Units	DP 50
Total weight	kg	0,74
Gap between jaws	mm	2 x 1,9
Repeatability	mm	+/- 0,02

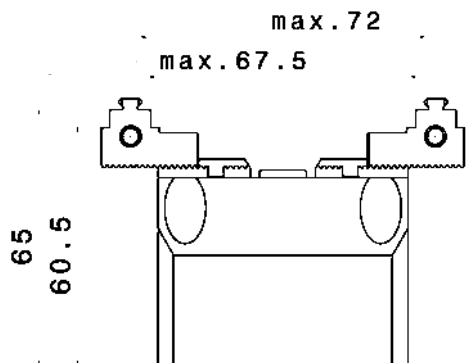


Technical Features

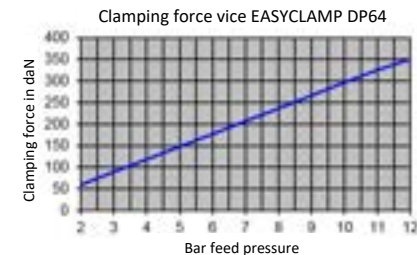
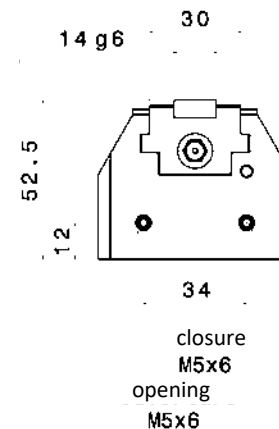
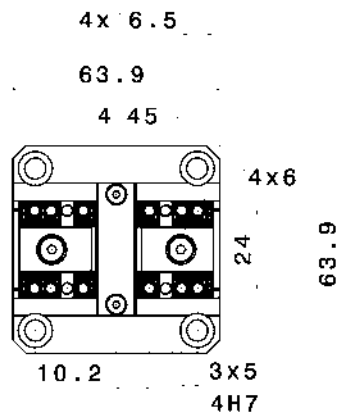
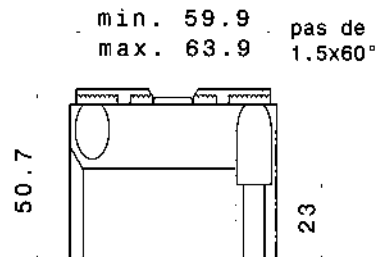
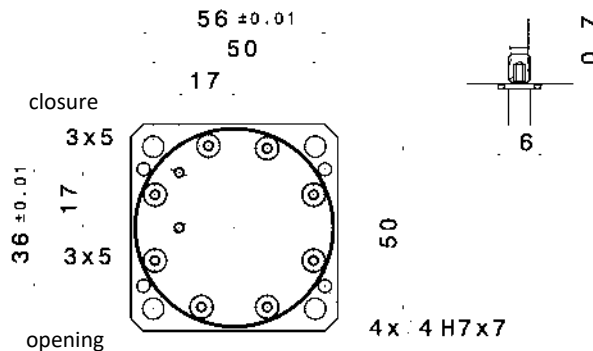
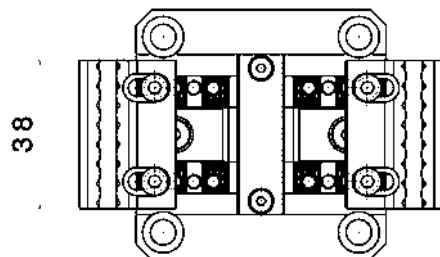
Double acting pneumatic precision clamp with a width of 64 mm and a repeatability of +/- 0.02 mm.

- > The vice versions are supplied with a set of standard cemented jaws.
- > The stroke is 2 mm per jaw, i.e. 4 mm total opening.
- > Fixing and centring can be done:
 - With 2 pins $\varnothing 4 \times 12$ and 4 screws CHc M6x35
- > The maximum pressure is 12 bar, minimum 2 bar.
- > Provide 2 seal counterbores $\varnothing 6 \times 0.7$ in all circumstances in the clamp holder opposite the M3 connections on the bottom.

SELF-CENTERING PNEUMATIC VICE > EASYCLAMP DP64



The jaws are fixed by 2 screws
2 screws CHc M4x10 c1.12-9



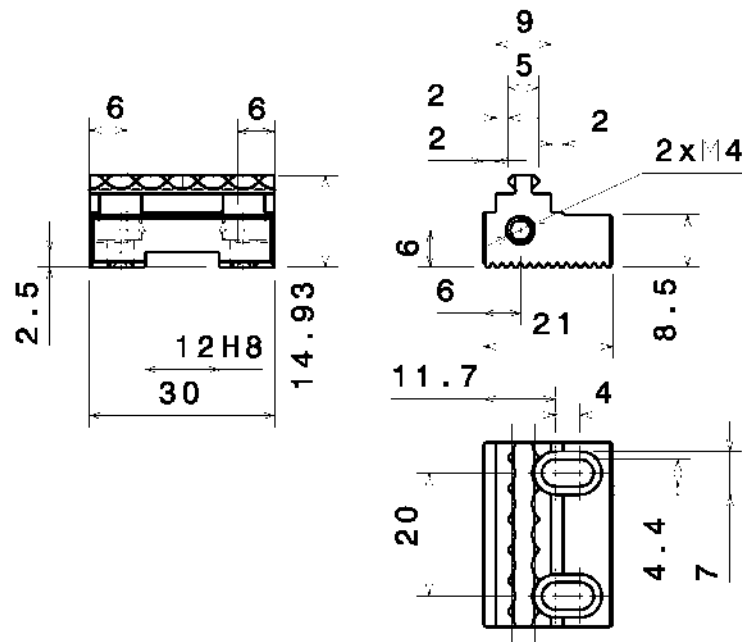
Technical Data	Units	DP 64
Total weight	kg	1.10
Gap between jaws	mm	2 x 2
Repeatability	mm	+/- 0,02

JAW WIDTH FOR DP50

> **MGM S-R12-H15-L30** (cemented)

Standard DP50 vice jaws

Weight : 0.038 kg

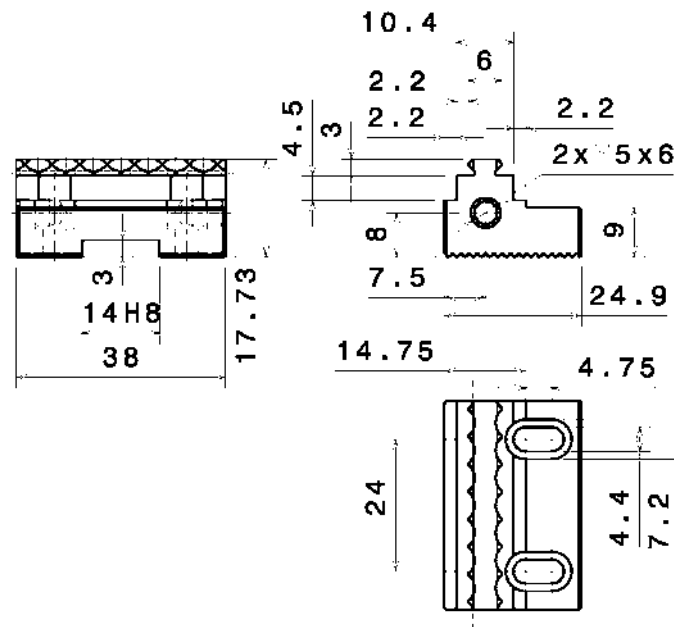


The vice is supplied with a pair of standard jaws

> JAW WIDTH FOR DP

> **MGM-S-A**) 1 (cemented)

Weight : 0.065 kg



SELF-CENTERING PNEUMATIC VICE > EASYCLAMP DP100 (-C)

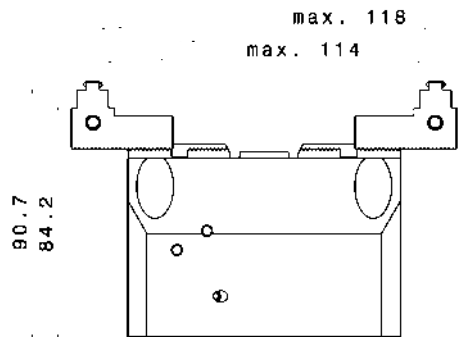


Technical Features

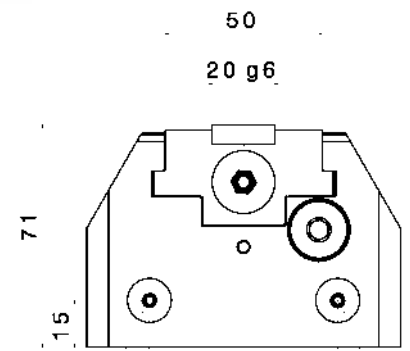
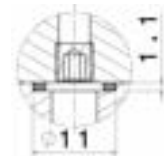
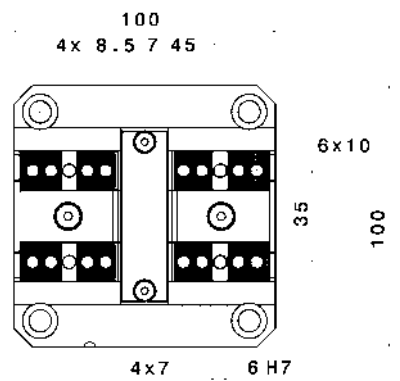
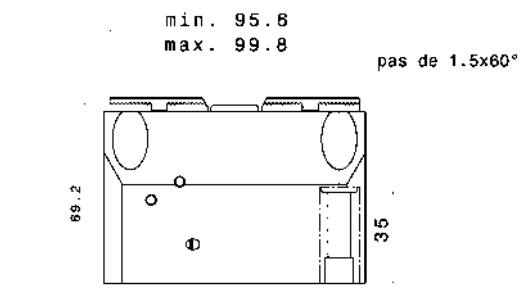
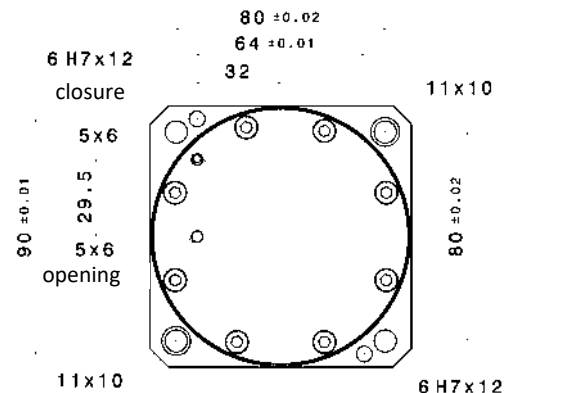
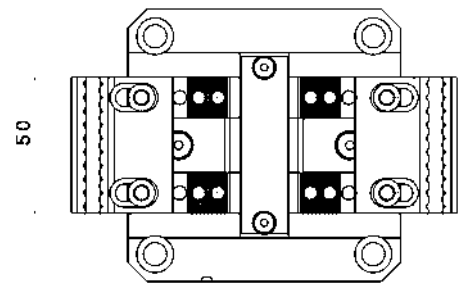
Double acting precision pneumatic clamping vice with a width of 100 mm and a repeatability of +/- 0.02 mm. It can be equipped with an optional internal positive clamping safety device, which allows a workpiece to be held tight after closing, even in the absence of pressure.

- > The vice versions are supplied with a set of standard cemented jaws.
- > The stroke is 2 mm per jaw, i.e. 4 mm total opening.
- > Fixing and centring can be done:
 - With 2 slotted spring rings \varnothing 11 and 4 M8x50 socket head cap screws
 - By 2 pins \varnothing 6x16 and 4 screws CHc M8x50
- > The maximum pressure is 9 bar, minimum 2 bar.
- > Provide 2 joint lamellae \varnothing 11x1 .1 in all circumstances in the vice holder in front of the M5 connections on the bottom.

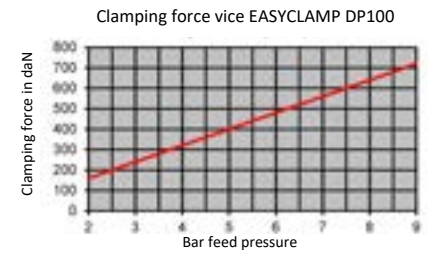
SELF-CENTERING PNEUMATIC VICE > EASYCLAMP DP100 (-C)



The jaws are fixed by 2 screws
2 screws CHc M6x16 c1.12-9
17



60
opening M5x6
closure M5x6



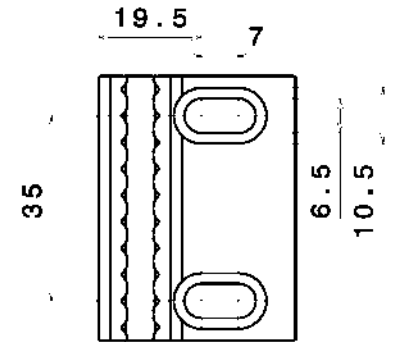
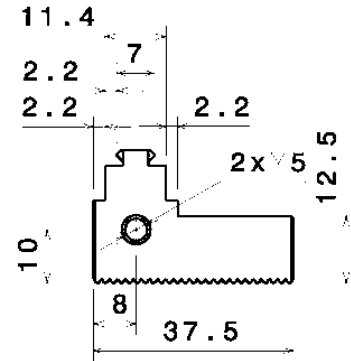
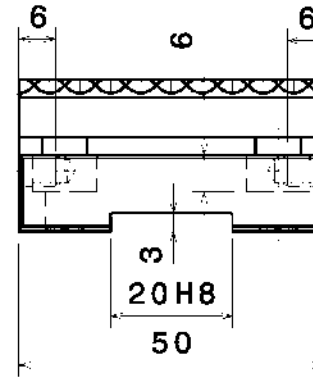
Technical Data	Units	DP100 (-C)
Total weight	kg	3.95
Gap between jaws	mm	2 x 2
Repeatability	mm	+/- 0,02

JAW WIDTH FOR DP100 (-C)

> **MGM S-R20-H25-L50** (cemented)

Standard DP 100 (-C) vice jaws

Weight : 0.19 kg

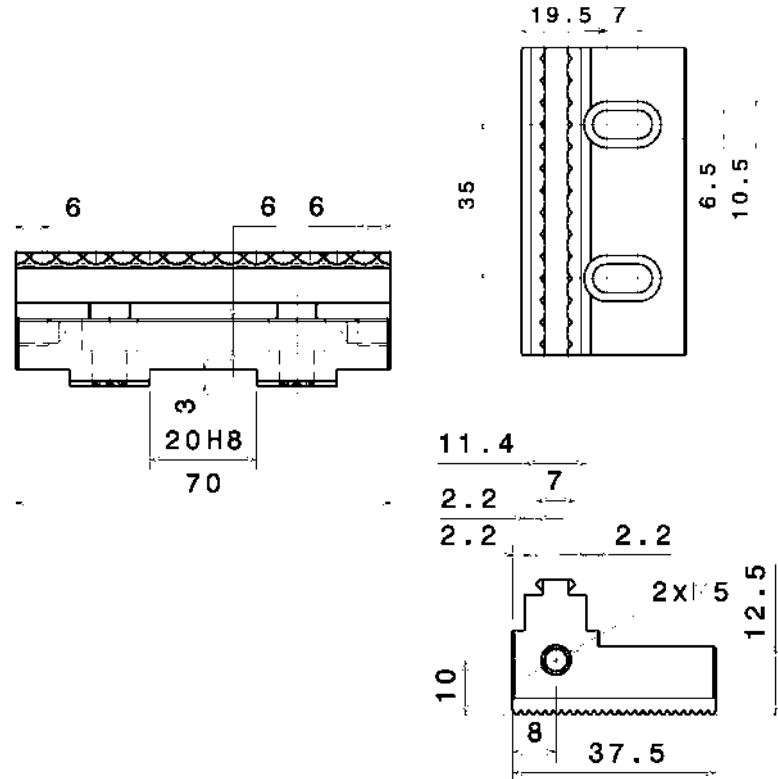


The vice is supplied with a pair of standard jaws

> JAW WIDTH FOR DP100 (-C)

> **MGM-S-R20-H25-L70** (cemented)

Weight : 0.27 kg



SELF-CENTERING PNEUMATIC VICE > EASYCLAMP DP160 (-C)

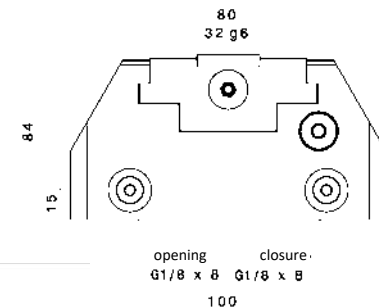
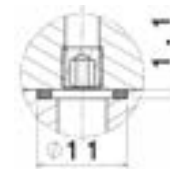
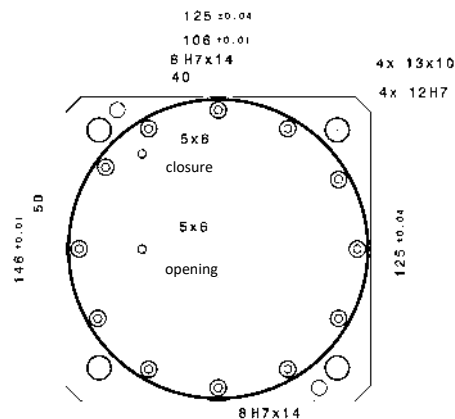
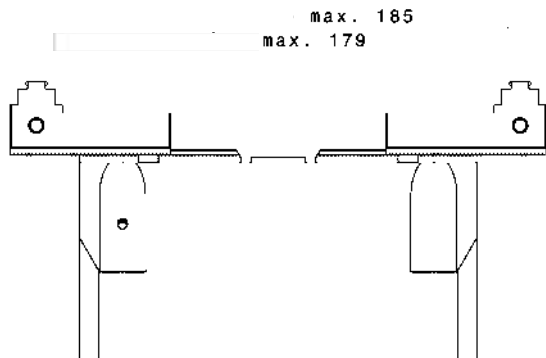


Technical Features

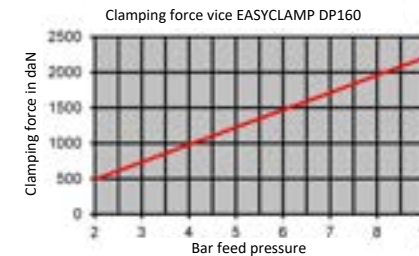
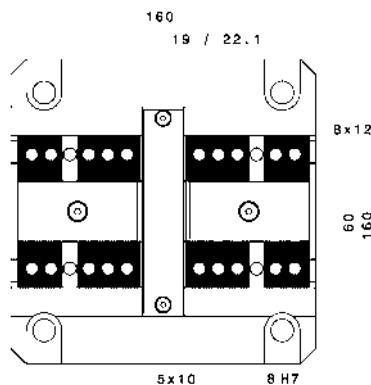
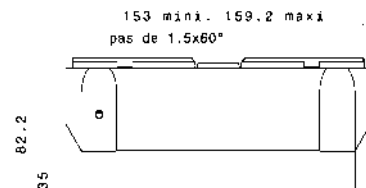
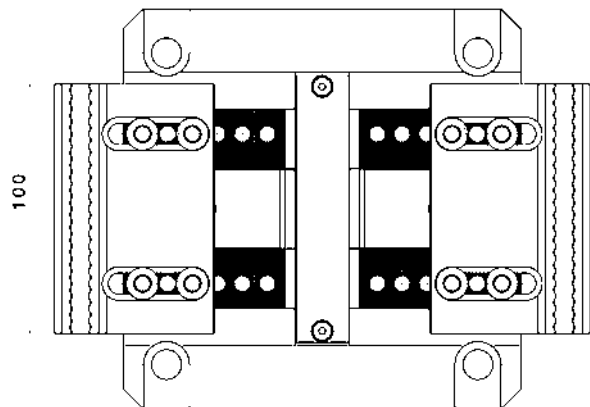
Double acting precision pneumatic clamping vice with a width of 160 mm and a repeatability of +/- 0.02 mm. It can be equipped with an optional internal positive clamping safety device which allows a workpiece to be held tight after closing even in the absence of pressure.

- > The vice versions are supplied with a set of standard cemented jaws.
- > The stroke is 3 mm per jaw, i.e. 6 mm of total opening.
- > Fixing and centring can be done :
 - With 2 slotted spring rings $\varnothing 13$ and 4 CHc screws M10x50
 - With 2 M10 shoulder screws and 2 M10x50 socket head cap screws
 - By 2 pins $\varnothing 8 \times 20$ and 4 screws CHc M10x50
- > The maximum pressure is 9 bar, minimum 2 bar.
- > Provide 2 x $\varnothing 11 \times 1.1$ gasketed holes in all circumstances in the clamp holder opposite the M5 connections on the bottom.

SELF-CENTERING PNEUMATIC VICE > EASYCLAMP DP160 (-C)



At maximum spacing, must be fixed with 4 screws CHc M8 c1.12-9



Technical Data	Units	DP160 (-C)
Total weight	kg	11.6
Gap between jaws	mm	2 x 3
Repeatability	mm	+/- 0,02

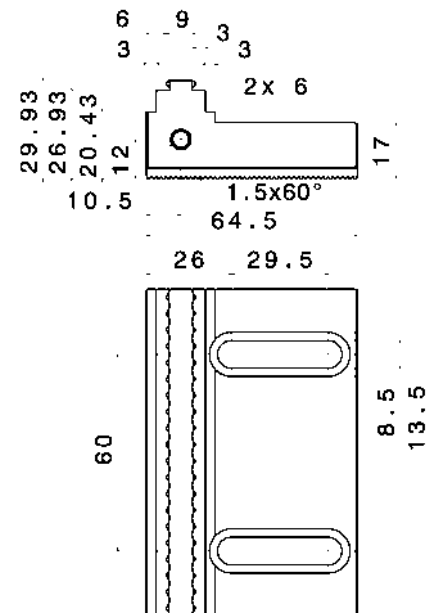
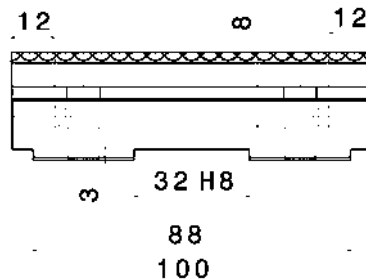
JAW WIDTH FOR DP160 (-C)

> **MGM-S-R32-H30-L100** (cemented)

Standard DP 160 vice jaws (-C)

Weight : 0.82 kg

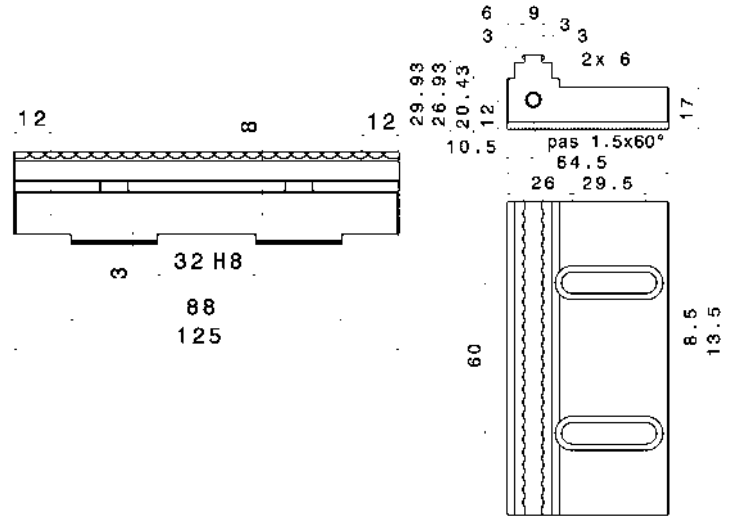
The vice is supplied with a pair of standard jaws



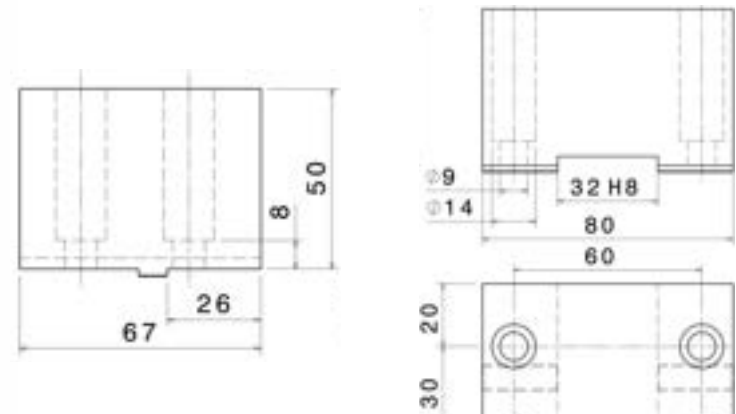
> JAW WIDTH FOR DP160 (-C)

> **MGM-S-R32-H30-L125** (cemented)

Weight : 1.05kg



> **ML-C-R32-H50** (Machinable)



SELF-CENTERING PNEUMATIC VICE > EASYCLAMP DP200 (-C)

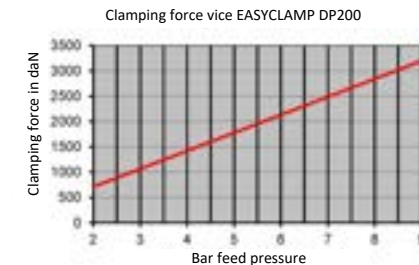
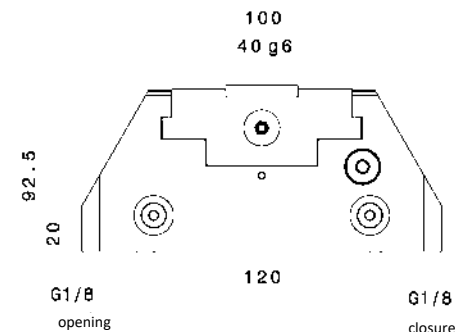
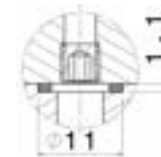
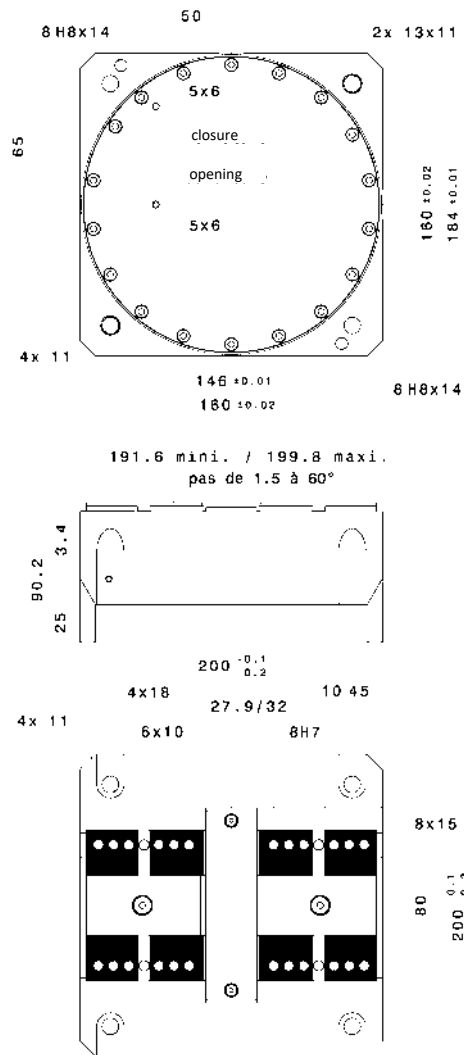
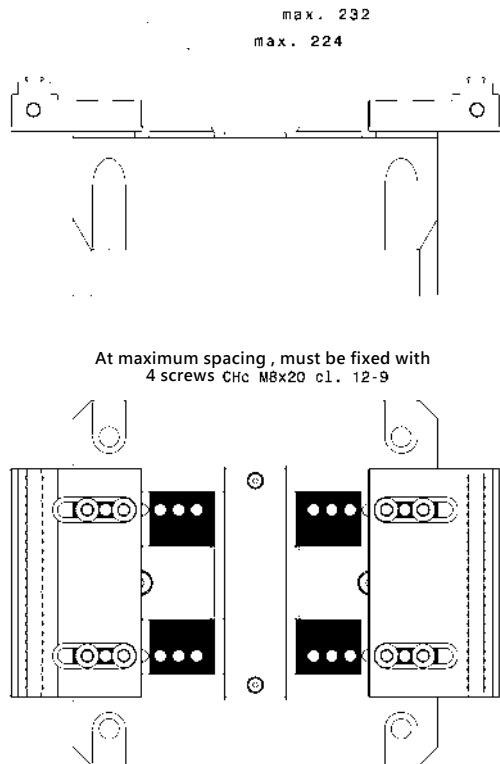


Technical Features

Pneumatic double-acting precision clamp with a width of 200 mm and a repeatability of +/- 0.02 mm. It can be equipped with an optional internal positive clamping safety device which allows a workpiece to be held tight after closing even in the absence of pressure.

- > The vice versions are supplied with a set of standard cemented jaws.
- > The stroke is 4 mm per jaw, i.e. 8 mm total opening.
- > Fixing and centring can be done:
 - Par 2 bagues élastiques fendues $\varnothing 13$ et 4 vis CHc M10x40
 - Par 2 goupilles $\varnothing 8 \times 20$ et 4 vis CHc M10x40
- > Provide 2 joint counterbores $\varnothing 11 \times 1.1$ in all circumstances in the clamp holder opposite the M5 connections connections on the underside.

SELF-CENTERING PNEUMATIC VICE > EASYCLAMP DP200 (-C)



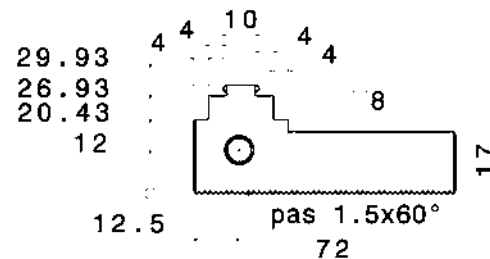
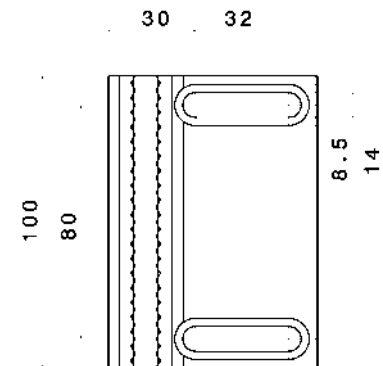
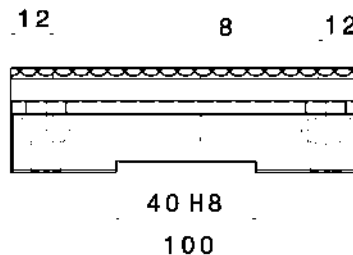
Technical Data	Units	DP 200 (-C)
Total weight	kg	19.2
Gap between jaws	mm	2 x 4
Repeatability	mm	+/- 0,02

JAW WIDTH FOR DP200 (-C)

The vice is supplied with a pair of standard jaws

> **MGM-S-R40-H30-L100** (cemented)

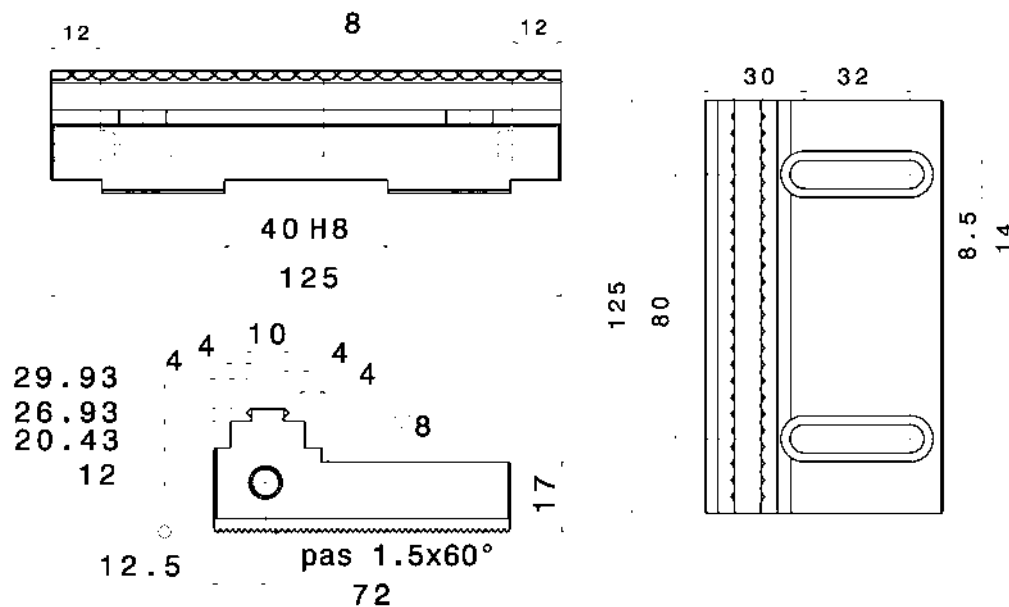
Weight : 0.93kg



> JAW WIDTH FOR DP200 (-C)

> **MGM-S-R40-H30-L125** (cemented)

Weight : 1.17kg



SELF-CENTERING PNEUMATIC VICE > EASYCLAMP DP250 (-C)

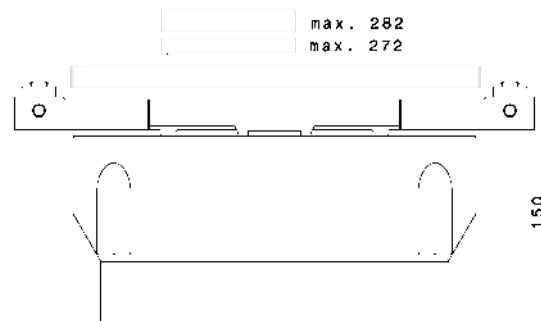


Technical Features

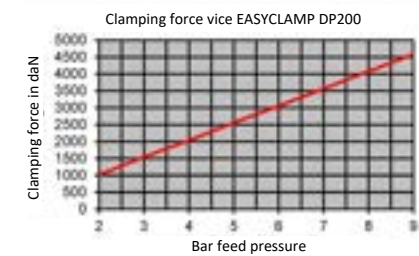
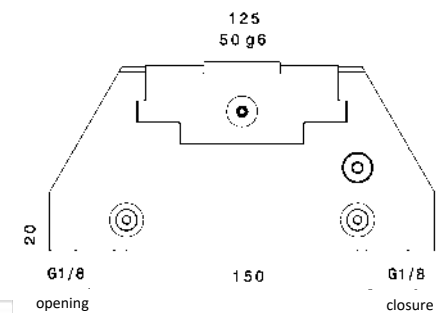
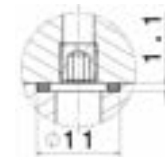
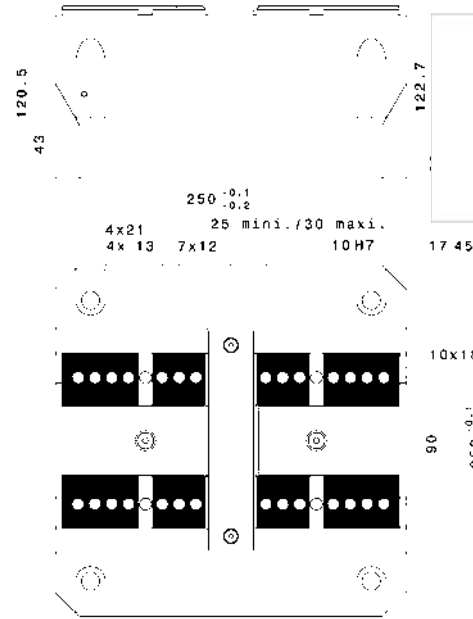
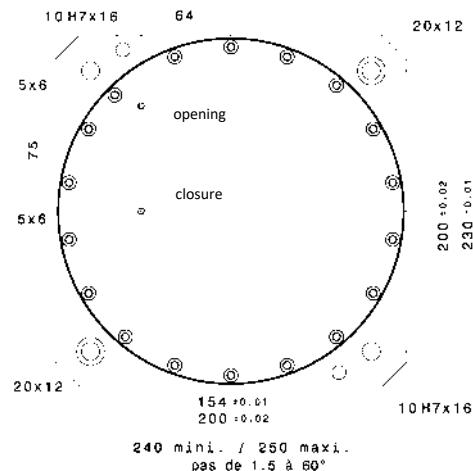
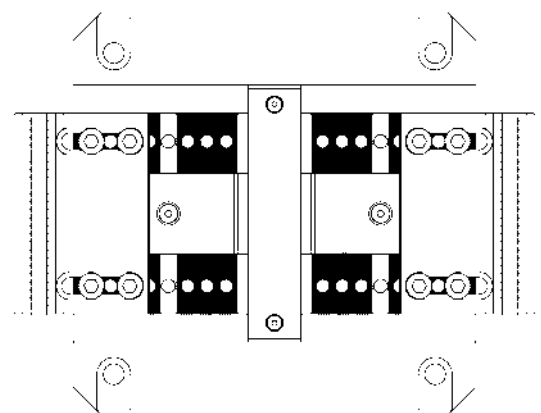
Double acting precision pneumatic clamping vice with a width of 250 mm and a repeatability of +/- 0.02 mm. It can be equipped with an optional internal positive clamping safety device which allows a workpiece to be held tight after closing even in the absence of pressure.

- > The vice versions are supplied with a set of standard cemented jaws.
- > The stroke is 5 mm per jaw, i.e. 10 mm total opening.
- > Fixing and centring can be done:
 - With 2 guide rings $\varnothing 20$ and 4 screws CHc M12x60
 - By 2 pins $\varnothing 10 \times 24$ and 4 screws CHc M 12x60
 - The maximum pressure is 9 bar, minimum 2 bar.
- > Provide 2 joint counterbores $\varnothing 11 \times 1.1$ in all circumstances in the clamp holder opposite the M5 connections on the bottom.

SELF-CENTERING PNEUMATIC VICE > EASYCLAMP DP250 (-C)



At maximum spacing, must be fixed with
4 screws M10x25 c.l. 12-9



Technical Data	Units	DP 250 (-C)
Total weight	kg	41
Gap between jaws	mm	2 x 5
Repeatability	mm	+/- 0,02

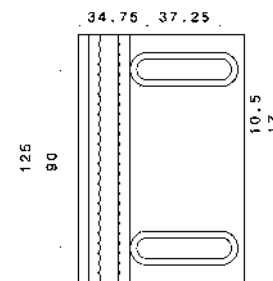
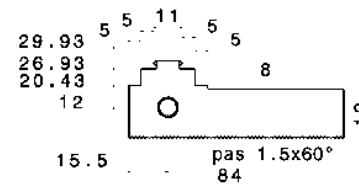
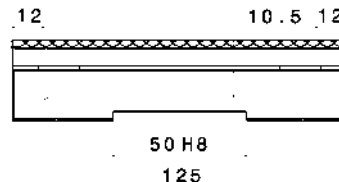
JAW WIDTH FOR DP250 (-C)

The vice is supplied with a pair of standard jaws

> MGM-S-R50-H30-L125 (cemented)

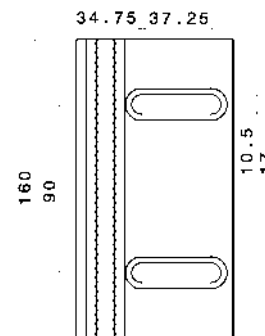
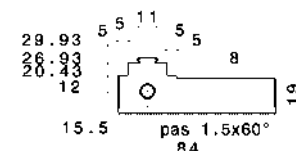
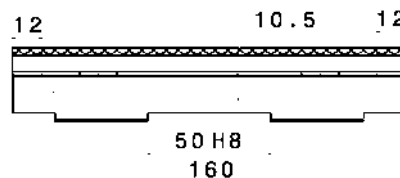
Standard DP250 vice jaws (-C)

Weight : 1.45kg

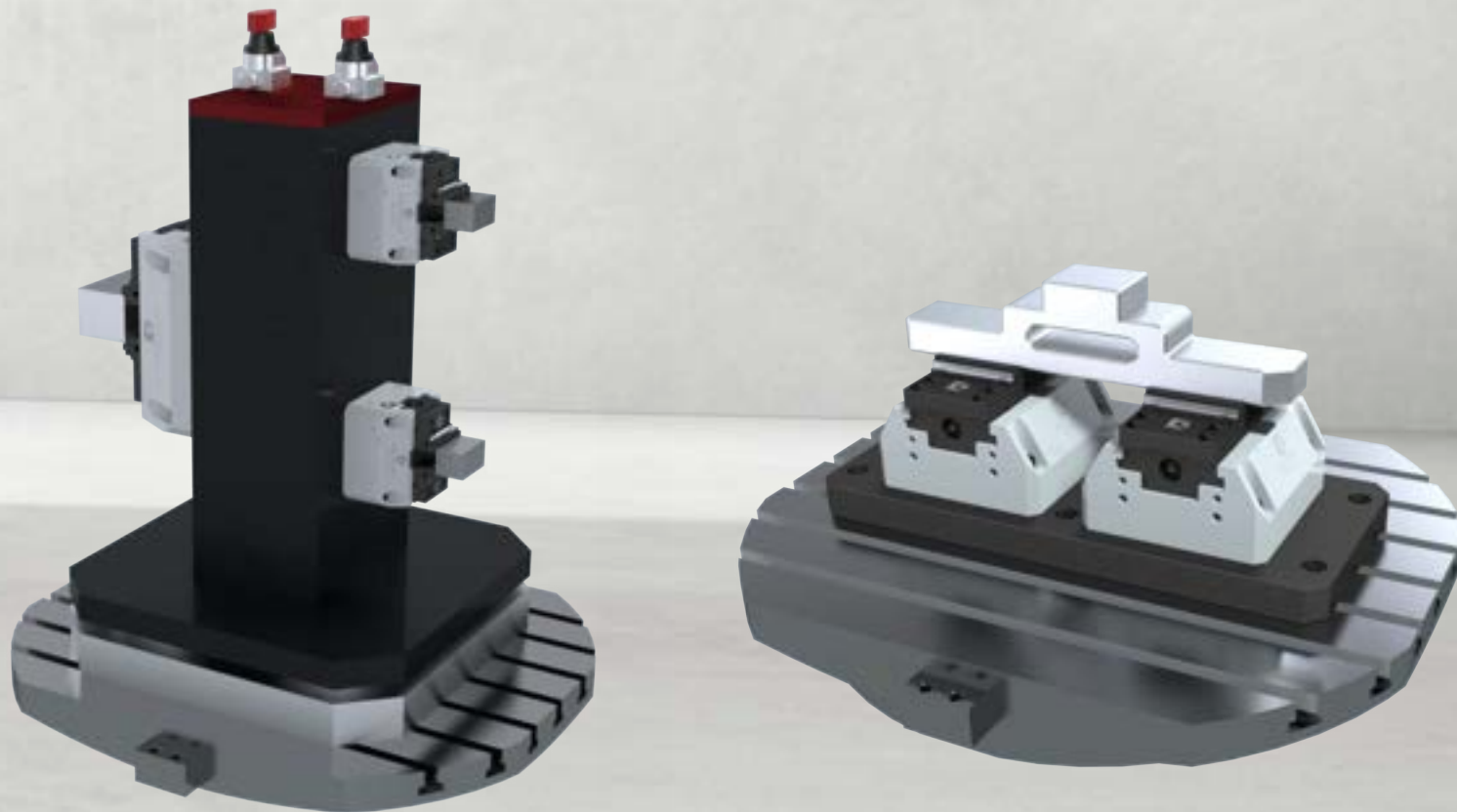


> MGM-S-R50-H30-L160 (cemented)

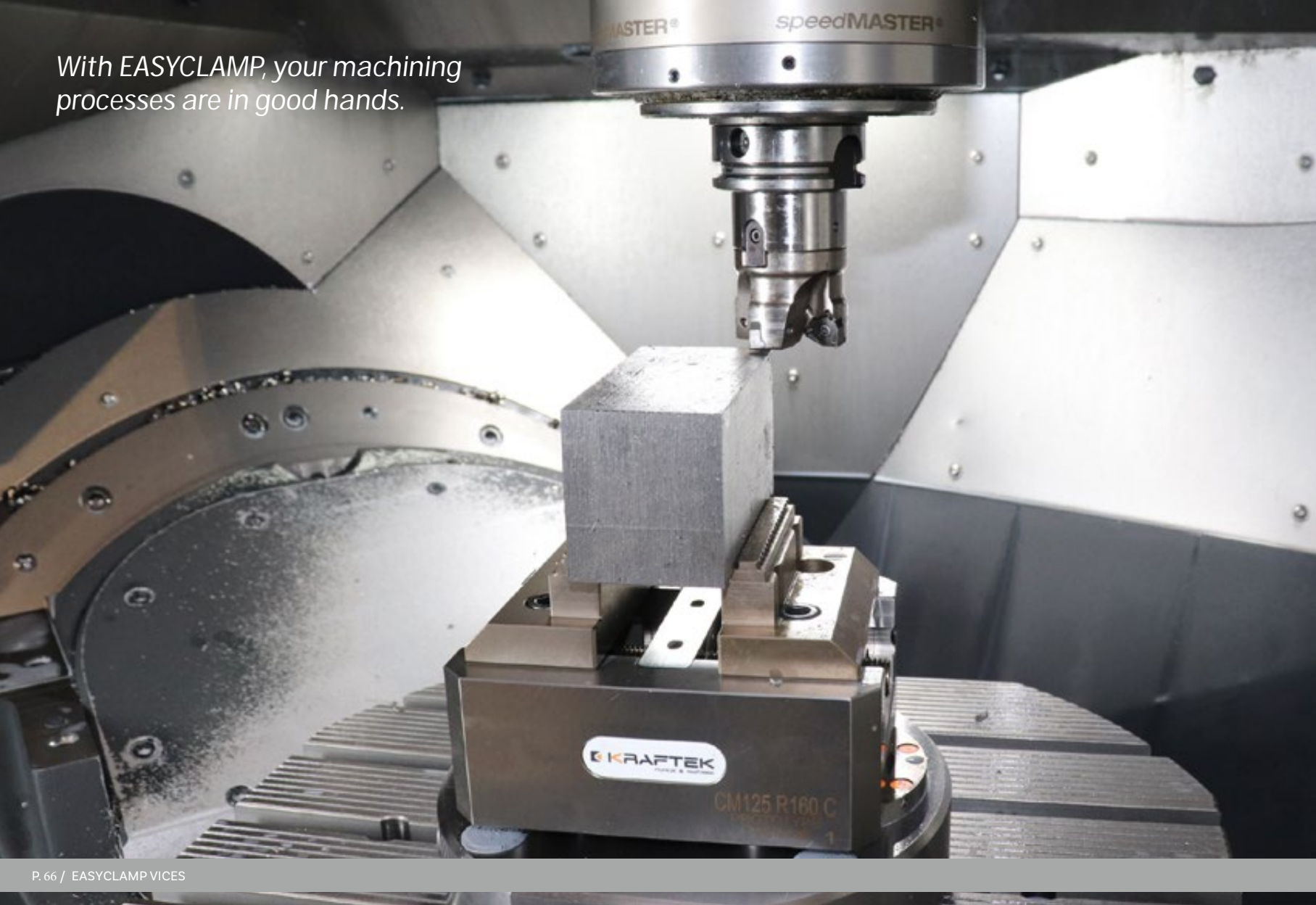
Weight : 1.86kg



> APPLICATIONS



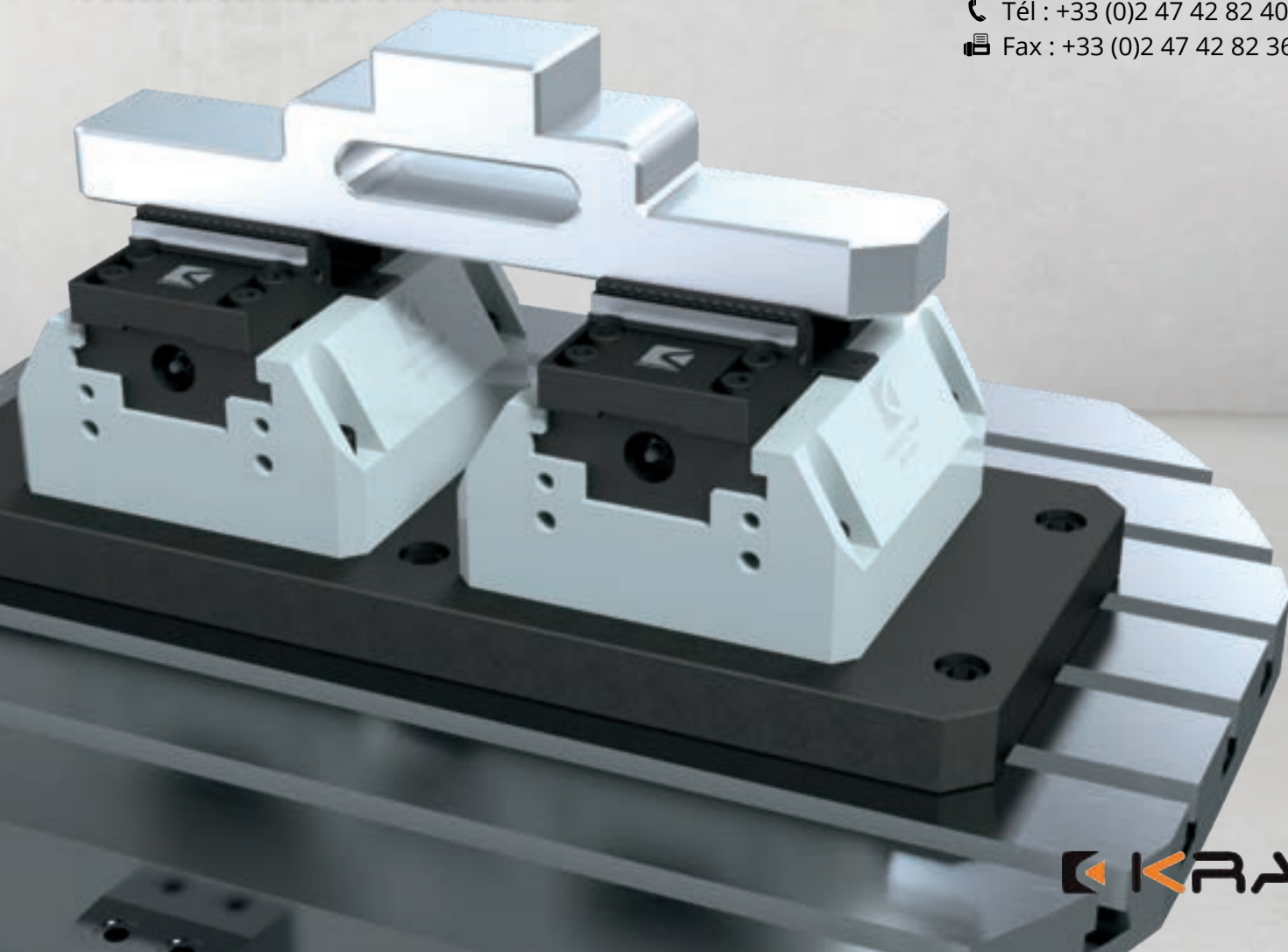
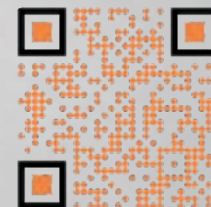
With EASYCLAMP, your machining processes are in good hands.





PLEASE VISIT OUR WEBSITE WWW.KRAFTEK.FR
TO DISCOVER OUR PRODUCTS AND SOLUTIONS.

📍 16 Rue Claude Chappe Z.A La Haute Limougère
37 230 FONDETTES France
☎ Tél : +33 (0)2 47 42 82 40
📠 Fax : +33 (0)2 47 42 82 36



 **KRAFTEK**